





COMMON KEY INFORMATION MEMORANDUM CUM APPLICATION FORM

Name of the Scheme	This product is suitable for investors who are seeking*	Riskometer
Motilal Oswal MOST Focused Dynamic Equity Fund (MOST Focused Dynamic Equity) (An open ended equity scheme)	<ul style="list-style-type: none"> • Long term capital appreciation • investment in equity, derivatives and debt instruments 	
Motilal Oswal MOST Focused Long Term Fund (MOST Focused Long Term) (An open ended equity linked saving Scheme with a 3 year lock-in)	<ul style="list-style-type: none"> • Long-term capital growth • Investment predominantly in equity and equity related instruments 	
Motilal Oswal MOST Focused Multicap 35 Fund (MOST Focused Multicap 35) (An Open Ended Diversified Equity Scheme)	<ul style="list-style-type: none"> • Long-term capital growth • Investment in a maximum of 35 equity and equity related instruments across sectors and market-capitalization levels 	
Motilal Oswal MOST Focused Midcap 30 Fund (MOST Focused Midcap 30) (An Open Ended Equity Scheme)	<ul style="list-style-type: none"> • Long-term capital growth • Investment in equity and equity related instruments in a maximum of 30 quality mid-cap companies having long-term competitive advantages and potential for growth 	
Motilal Oswal MOST Focused 25 Fund (MOST Focused 25) (An Open Ended Equity Scheme)	<ul style="list-style-type: none"> • return by investing upto 25 companies with long term sustainable competitive advantage and growth potential • investment in Equity and equity related instruments subject to overall limit of 25 companies 	

Motilal Oswal MOST Ultra Short Term Bond Fund (MOST Ultra Short Term Bond Fund) (An open ended Debt Scheme)	<ul style="list-style-type: none"> • Optimal returns consistent with moderate levels of risk • Investment in debt securities and money market securities with average maturity less than equal to 12 months 	
---	---	--

*Investors should consult their financial advisers if in doubt about whether the product is suitable for them.

Continuous Offer of Units of the Schemes at NAV based prices.

Name of Mutual Fund	Motilal Oswal Mutual Fund
Name of Asset Management Company (AMC)	Motilal Oswal Asset Management Company Limited
Name of Trustee Company	Motilal Oswal Trustee Company Limited
Address	<u>Registered and Corporate Office Address:</u> 10 th Floor, Motilal Oswal Tower, Rahimtullah Sayani Road, Opposite Parel ST Depot, Prabhadevi, Mumbai – 400025
Website	www.motilaloswalmf.com and www.mostshares.com

This Key Information Memorandum (KIM) sets forth the information, which a prospective investor ought to know before investing. **For further details of the scheme/Mutual Fund, due diligence certificate by the AMC, Key Personnel, investors' rights & services, risk factors, penalties & pending litigations etc. investors should, before investment, refer to the Scheme Information Document and Statement of Additional Information available free of cost at any of the Investor Service Centres or distributors or from the website www.motilaloswalmf.com and www.mostshares.com.**

The Scheme particulars have been prepared in accordance with Securities and Exchange Board of India (Mutual Funds) Regulations, 1996, as amended till date, and filed with Securities and Exchange Board of India (SEBI). The units being offered for public subscription have not been approved or disapproved by SEBI, nor has SEBI certified the accuracy or adequacy of this KIM.

This KIM is dated October 15, 2016.

INVESTMENT OBJECTIVE

MOST Focused Dynamic Equity

The investment objective is to generate long term capital appreciation by investing in equity and equity related instruments including equity derivatives as well as debt instruments.

However, there can be no assurance or guarantee that the investment objective of the Scheme would be achieved.

MOST Focused Long Term

The investment objective of the Scheme is to generate long-term capital appreciation from a diversified portfolio of predominantly equity and equity related instruments.

However, there can be no assurance or guarantee that the investment objective of the Scheme would be achieved.

MOST Focused Multicap 35

The investment objective of the Scheme is to achieve long term capital appreciation by primarily investing in a maximum of 35 equity & equity related instruments across sectors and market-capitalization levels.

However, there can be no assurance or guarantee that the investment objective of the Scheme would be achieved.

MOST Focused Midcap 30

The investment objective of the Scheme is to achieve long term capital appreciation by investing in a maximum of 30 quality mid-cap companies having long-term competitive advantages and potential for growth.

However, there can be no assurance or guarantee that the investment objective of the Scheme would be achieved.

MOST Focused 25

The investment objective of the Scheme is to achieve long term capital appreciation by investing in upto 25 companies with long term sustainable competitive advantage and growth potential.

However, there can be no assurance or guarantee that the investment objective of the Scheme would be achieved.

MOST Ultra Short Term Bond Fund

The investment objective of the Scheme is to generate optimal returns consistent with moderate levels of risk and liquidity by investing in debt securities and money market securities.

However, there can be no assurance or guarantee that the investment objective of the Scheme would be achieved.

ASSET ALLOCATION PATTERN

The asset allocation pattern of the Scheme(s) would be as follows:

MOST Focused Dynamic Equity

Instruments	Indicative Allocations (%of total assets)		Risk Profile
	Minimum	Maximum	High/Medium/Low
Equity & equity related instruments	65	100	High
Equity Derivatives	0	35	Low to Medium
Debt Instruments, Money Market Instruments, G-Secs, Cash and Cash at call, etc.	0	35	Low to Medium

Money Market Instruments include CMBs, T-Bills, and Government securities with an unexpired maturity upto one year, CBLOs & Repo/ Reverse Repo.

In the Scheme, the net long only equity exposure shall be a minimum of 30% of the portfolio value. The Scheme may invest in derivative strategies from time to time as permitted by SEBI/RBI. The Scheme may take derivatives position upto 35% of the portfolio value. The Scheme shall not write options or purchase instruments with embedded written options. The cumulative gross exposure through equity, debt and derivative positions should not exceed 100% of the net assets of the scheme.

The Scheme may engage in securities lending upto 20% of total Net Assets of the Scheme and would limit its maximum single party exposure to the extent of 5% of the total net assets at the time of lending.

The Scheme shall not invest in Credit Default Swaps (CDS). The Scheme will not invest in foreign securities, securitized debt, corporate debt repo and corporate reverse repo. The scheme shall not undertake short selling.

MOST Focused Long Term

Instruments	Indicative Allocations (%of total assets)		Risk Profile
	Minimum	Maximum	High/Medium/Low
Equity & Equity related instruments	80	100	High
Debt Instruments, Money Market Instruments, G-Secs, Cash and Cash at call, etc.	0	20	Low

Money Market Instruments include CMBs, T-Bills, and Government securities with an unexpired maturity upto one year, CBLOs & Repo/ Reverse Repo.

The Scheme may invest in derivative products from time to time only if permitted under ELSS Rules. In such event, the exposure to derivative instruments shall not exceed 50% of the total Net Assets of Scheme. The Scheme shall not write options or purchase instruments with embedded written options. The Scheme may use derivatives for such purposes as may be permitted by the Regulations, including for the purpose of hedging and portfolio balancing, based on the opportunities available and subject to guidelines issued by SEBI from time to time. The cumulative

gross exposure through equity, debt and derivative positions should not exceed 100% of the net assets of the scheme.

The Scheme may engage in Stock Lending, as and when permitted under the applicable regulations and ELSS rules. In such event, the Scheme shall not participate in securities lending of not more than 20% of total Net Assets of the Scheme and would limit its exposure with regard to securities lending for a single intermediary to the extent of 5% of the total net assets at the time of lending.

The scheme will not invest in foreign securities, securitized debt, corporate debt repo and corporate reverse repo. The scheme shall not undertake short selling.

MOST Focused Multicap 35

Instruments	Indicative Allocations (%of total assets)		Risk Profile
	Minimum	Maximum	High/Medium/Low
Equity & Equity related instruments*	65	100	High
Debt Instruments, Money Market Instruments, G-Secs, Cash and Cash at call, etc.	0	35	Low

*subject to overall limit of 35 securities

Money Market Instruments include CMBs, T-Bills, and Government securities with an unexpired maturity upto one year, CBLOs & Repo/ Reverse Repo.

The Scheme may invest in derivative products from time to time as permitted by SEBI/RBI. The exposure to derivative instruments shall not exceed 50% of the total Net Assets of Scheme. The Scheme shall not write options or purchase instruments with embedded written options. The Scheme will not participate in securities lending more than 20% of total Net Assets of the Scheme and would limit its exposure with regard to securities lending for a single intermediary to the extent of 5% of the total net assets at the time of lending.

The cumulative gross exposure through equity, debt and derivative positions should not exceed 100% of the net assets of the scheme.

The Scheme will not invest in Securitised debt, corporate debt repo and reverse repo. The Scheme shall not undertake short selling.

The Scheme may invest in foreign securities including ADRs/GDRs/Foreign equity and equity related instruments upto 10% of the total net assets of the Scheme. Such investments will be subject to SEBI (Mutual Funds) Regulations, 1996 and in compliance with SEBI Circular No. SEBI/IMD/CIR No.7/104753/07 dated September 26, 2007 and such other regulations from time to time.

MOST Focused Midcap 30

Instruments	Indicative Allocations (%of total assets)		Risk Profile
	Minimum	Maximum	High/Medium/Low
Equity and equity related instruments* selected between Top 101 st and 200 th listed companies by market capitalization	65	100	High

Equity and equity related instruments* beyond the Top 200 th listed company and with market capitalization not lower than INR 600 crs.	0	25	High
Debt, Money Market Instruments, G-Sec, Bonds, Cash and cash equivalents, etc.	0	10	Low

*subject to overall limit of 30 companies

Money Market Instruments include CMBs, T-Bills, and Government securities with an unexpired maturity upto one year, CBLOs & Repo/ Reverse Repo.

Exposure by the Scheme in derivative instruments shall not exceed 50% of the total Net Assets of Scheme. The Scheme will not participate in securities lending more than 20% of total Net Assets of the Scheme and would limit its exposure with regard to securities lending for a single intermediary to the extent of 5% of the total net assets at the time of lending.

The cumulative gross exposure through equity, debt and derivative positions should not exceed 100% of the net assets of the scheme.

The scheme will not invest in Securitised debt, corporate debt repo and reverse repo and foreign securities. The scheme shall not undertake short selling.

The scheme shall invest in equity and equity related instruments as per the investment objective of the scheme. While it is the intention of the Scheme to maintain the maximum exposure guidelines provided in the table above, there may be instances when these percentages may be exceeded. Typically, this may occur while the Scheme is new and the corpus is small thereby causing diversification issues.

MOST Focused 25

Instruments	Indicative allocations (% of total assets)		Risk Profile
	Minimum	Maximum	High/Medium/Low
Equity and equity related instruments* selected from Top 100 listed companies by market capitalization	65	100	High
Equity and equity related instruments* of the next 50 companies by market capitalization	0	25	High
Debt, Money Market Instruments, G-Sec, Bonds, Cash and Cash Equivalents, etc.	0	10	Low

*subject to overall limit of 25 companies

Money Market Instruments include CMBs, T-Bills, and Government securities with an unexpired maturity upto one year, CBLOs & Repo/ Reverse Repo.

The scheme shall invest in equity and equity related instruments as per the investment objective of the scheme. While it is the intention of the Scheme to maintain the maximum exposure guidelines provided in the table above, there may be instances when these percentages may be exceeded. Typically, this may occur while the Scheme is new and the corpus is small thereby causing diversification issues.

Exposure by the Scheme in derivative instruments shall not exceed 50% of the total Net Assets of Scheme. The Scheme will not participate in stock lending more than 20% of total Net Assets of the Scheme and would limit its exposure with regard to stock lending for a single intermediary to the extent of 5% of the total net assets at the time of lending.

The scheme will not invest in Securitised debt and foreign securities.

The cumulative gross exposure through equity, debt and derivative positions should not exceed 100% of the net assets of the scheme.

MOST Ultra Short Term Bond Fund

Instruments	Indicative allocations (% of total assets)		Risk Profile
	Minimum	Maximum	High/Medium/Low
Debt Instruments including Government Securities, Corporate Debt, Other debt instruments, Term Deposits and Money Market Instruments with average maturity less than equal to 12 months	0	100	Low

*Money Market Instruments include CMBs, T-Bills, and Government securities with an unexpired maturity upto one year, CBLOs & Repo/ Reverse Repo. While it is the intention of the Scheme to maintain the maximum exposure guidelines provided in the table above, there may be instances when these percentages may be exceeded. Typically, this may occur while the Scheme is new and the corpus is small thereby causing diversification issues. The scheme will not invest in Securitised debt, foreign securities and derivatives.

INVESTMENT STRATEGY

MOST Focused Dynamic Equity

In the Scheme, the core long only equity exposure shall be a minimum of 30% of the portfolio value. Long only equity exposure means exposure to equity shares alone without a corresponding equity derivative exposure.

The Fund will use Motilal Oswal Value Index (MOVI) as an indicator for the asset allocation between Equities, Arbitrage, Derivatives strategies and Debt. The asset allocation shall be reviewed twice a month and the rebalancing will be conducted on 15th of every month and a day prior to derivative expiry day on the Exchange (if the above days are a non-business day, the previous business day shall be considered for rebalancing). However, there may be additional rebalances at the discretion of the Fund manager. However the rebalancing will always be based on the MOVI levels.

The MOVI helps gauge attractiveness of the equity market. The MOVI is calculated taking into account Price to Earnings (P/E), Price to Book (P/B) and Dividend Yield of the Nifty 50 Index. The MOVI is calculated on 30 Daily Moving Average of the above parameters. A low MOVI level indicates that the market valuation appears to be cheap and one may allocate a higher percentage of their investments to Equity as an asset class. A high MOVI level indicates that the market valuation appears to be expensive and that one may reduce their equity allocation.

The equity allocation based on the MOVI levels is as below:

MOVI Levels		Equity Exposure
Less than 70		100%
70	<80	90%
80	<90	80%
90	<100	70%
100	<110	55%
110	<120	40%
120	<130	25%
130 or above		0%

India Index Services & Products Ltd. (IISL) is the calculating agent of NIFTY MOVI. IISL shall calculate, compile, maintain and provide NIFTY MOVI values to Motilal Oswal Asset Management Company Ltd. NIFTY MOVI values will be published on the MOAMC website on a daily basis.

Any change in methodology of MOVI would be construed as change in Investment Strategy and will be carried out by obtaining prior consent of the Board of Trustees of Motilal Oswal Trustee Company Limited, the Trustees to Motilal Oswal Mutual Fund. Hence, it will be construed as a change in fundamental attribute and accordingly, the relevant regulatory provisions will be applicable.

Equity Investment: The Fund shall follow an active investment style using bottom-up stock picking based on the „Buy Right : Sit Tight’ investment philosophy. The Fund managers shall identify and invest in shares of businesses run by high quality management & having sustainable and scalable business models thus using QGLP (Quality, Growth, Longevity & Price) as the key evaluation parameters. The businesses should have strong earnings growth prospects and be available at reasonable valuations.

The Fund Portfolio shall comprise of high conviction stock ideas from across market-capitalization levels/sectors. The portfolio stocks may be potentially concentrated in a few market capitalization levels/sectors which are expected to do well and have lower downside risk

Debt: The Fund shall invest in various types of permitted Debt Instruments including Government Securities, Corporate Debt, Other debt instruments and Money Market Instruments of various maturities and ratings with the objective of providing liquidity and achieving optimal returns.

Arbitrage and Derivative Strategies: The Fund shall undertake Cash/Futures Arbitrage to take advantage of the volatile situation in the market. The Fund may use Derivative including Index Futures, Stock Futures, Index Options and Stock Options etc.

Following depicts more clarity on MOVI based Scheme allocation.

MOVI Levels		Equity Exposure as per MOVI	Scheme Allocations		
			Equity	Equity Arbitrage	Debt Instruments
Less than 70		100%	100%	0%	0%
70	<80	90%	90%	0%	10%
80	<90	80%	80%	0%	20%
90	<100	70%	70%	0%	30%

100	<110	55%	55%	10%	35%
110	<120	40%	40%	25%	35%
120	<130	25%	30%	35%	35%
130 or above		0%	30%	35%	35%

Scenario 1 - Let's assume the MOVI is at 60 which means it falls in the range of 100% equity allocation. Therefore, the fund manager in the above case will take upto 100% long only equity exposure.

Scenario 2 - Let's assume the MOVI level is at 100 which means it falls in the range of 55% equity allocation. Therefore, the fund manager in the above case will take 55% long only equity exposure and minimum 10% in arbitrage opportunity. The balance upto 35% will be invested in debt instruments.

Scenario 3 - Let's assume the MOVI level is at 120 which means it falls in the range of 25% equity allocation. Therefore, the fund manager in the above case will take 30% long only equity exposure and minimum 35% in arbitrage opportunity. The balance upto 35% will be invested in debt instruments.

Scenario 4 - Let's assume the MOVI level is at 150 which means it falls in the range of 0% equity allocation. Therefore, the fund manager in the above case will take 30% long only equity exposure and minimum 35% in arbitrage opportunity. The balance upto 35% will be invested in debt instruments.

In the periods where the MOVI levels indicates a 100% equity allocation, the exposure of the scheme in equity and equity related instruments will increase upto 100%. However, if the MOVI levels reflect high valuation, the Scheme will restrict its investment in equity to 30% and shall take arbitrage positions to the extent of 35% of the portfolio, therefore resulting into an equity category exposure of 65%. In such a scenario the balance will be invested into debt market instruments.

While making investment decisions, besides other factors, the impact of the prevailing economic environment over the medium to long term prospects of the companies will also be taken into consideration. The AMC will endeavour to meet the investment objective of the Scheme while maintaining a balance between safety, liquidity and return on investments.

MOST Focused Long Term

The Scheme will invest in securities across asset classes (debt and equity) and across sectors and capitalization levels. Emphasis will be placed on identifying high quality/high & sustainable growth companies for investment.

The fund shall follow an active investment style using bottom-up stock picking. The fund managers shall identify and invest in shares of high quality businesses having sustainable and scalable business models thus using QGLP (Quality, Growth, Longevity & Price) as the key evaluation parameters. The businesses should have strong earnings growth prospects and be available at reasonable valuations.

The fund shall be benchmark agnostic with a portfolio of high conviction stock ideas from across market-capitalization levels/ sectors. The portfolio stocks could be potentially concentrated in a few market capitalization levels/sectors which have very low downside risk.

While making investment decisions, besides other factors, the impact of the prevailing economic environment over the medium to long term prospects of the companies will also be taken into consideration. The AMC will endeavour to meet the investment objective of the Scheme while maintaining a balance between safety, liquidity and return on investments.

MOST Focused Multicap 35

The Scheme will invest in attractive securities across asset classes (debt and equity) and across sectors and capitalization levels. Emphasis will be placed on identifying high quality/high & sustainable growth companies for investment.

The fund shall follow an active investment style using bottom-up stock picking. The fund managers shall identify and invest in shares of high quality businesses having sustainable and scalable business models thus using QGLP (Quality, Growth, Longevity & Price) as the key evaluation parameters. The businesses should have strong earnings growth prospects and be available at reasonable valuations.

The fund shall be benchmark agnostic with a portfolio of high conviction stock ideas from across market-capitalization levels/ sectors. The portfolio stocks could be potentially concentrated in a few market capitalization levels/ sectors which have very low downside risk.

The fund can invest in compelling opportunities in foreign listed securities (including ETFs and other overseas funds)

The fund may also selectively invest in strong business franchises in the unlisted space, with a scalable business model and available at attractive valuations.

While making investment decisions, besides other factors, the impact of the prevailing economic environment over the medium to long term prospects of the companies will also be taken into consideration.

The AMC will endeavour to meet the investment objective of the Scheme while maintaining a balance between safety, liquidity and return on investments.

MOST Focused Midcap 30

The primary investment objective of the Scheme is to generate returns by investing in a portfolio of midcap equity and equity related instruments, money market instruments, cash and cash equivalents. The Fund may also enter into securities lending or such other transactions, in accordance with the Regulations, as may be allowed to Mutual Funds from time to time.

The portfolio will essentially follow MOAMC's QGLP philosophy – i.e. invest in Quality businesses with reasonable Growth potential and with sufficient Longevity of that growth potential at a fair Price. The scheme shall follow an active investment style and will seek to invest in midcap companies with a strong competitive position or economic moat, good business prospects, run by a competent management that will help them achieve good growth over the medium to long term and available at reasonable valuations. The fund shall practice a focused, high-conviction portfolio strategy with a low-churn, buy and hold approach to investing. It will typically select companies from beyond the Top 100 listed entities on the Indian stock exchanges and companies with market capitalizations not lower than INR 600crs..

The long-term India growth story provides an excellent platform for small and mid-size businesses to unleash their growth potential and to emerge as large cap companies of the future. India has a plethora of mid-size listed companies and their number has only risen in recent years. We believe the midcap universe in India even today presents similar such investment opportunities from a medium to long term perspective. Besides, midcaps are typically found to be under-owned and under-researched and hence provide a large universe of exciting investment prospects.

While making investment decisions, besides other factors, the impact of the prevailing economic environment over the medium to long term prospects of the companies will also be taken into consideration.

The AMC will endeavour to meet the investment objective of the Scheme while maintaining a balance between safety, liquidity and return on investments.

MOST Focused 25

The primary investment objective of the Scheme is to generate returns by investing in a portfolio of primarily in equity and equity related instruments, money market instruments, cash and cash equivalents. The Fund may also enter into “Stock Lending” or such other transactions, in accordance with the Regulations, as may be allowed to Mutual Funds from time to time.

The scheme shall follow an active investment style and it will seek to invest in companies with strong competitive position, good industry prospects, good business prospects along with quality management that may help them to achieve good growth over medium to long term.

While making investment decisions, besides other factors, the impact of the prevailing economic environment over the medium to long term prospects of the companies will also be taken into consideration.

The AMC will endeavour to meet the investment objective of the Scheme while maintaining a balance between safety, liquidity and return on investments.

MOST Ultra Short Term Bond Fund

The fund management team will endeavor to maintain a consistent performance in the scheme by maintaining a balance between safety, liquidity and profitability aspects of various investments. The fund manager will try to achieve an optimal risk return balance for management of the fixed income portfolios. The investments in debt instruments carry various risks like interest rate risk, liquidity risk, default risk, purchasing power risk etc. While they cannot be done away with, they can be minimized by diversification and effective use of hedging techniques. The fund management team will take an active view of the interest rate movement by keeping a close watch on various parameters of the Indian economy, as well as developments in global markets. Investment in debt instruments carries various risks like Interest Rate Risk, Liquidity Risk, Credit Risk, etc. While they cannot be eliminated, they can be reduced by diversification and effective use of hedging techniques.

Investment views/decisions will be taken on the basis of following parameters:

1. Liquidity of the security.
2. Maturity profile of the instruments.
3. Quality of the Security/instrument (including the financial health of the issuer).
4. Returns offered relative to alternative investment opportunities.
5. Prevailing interest rate scenario.

6. Any other factors considered relevant in the opinion of the AMC.

RISK PROFILE OF THE SCHEME

Mutual Fund units involve risks including the possible loss of principal. Please read Scheme Information Document (SID) carefully for details on risk factors before investment. Scheme Specific Risk factors are summarized below:

Risk factors for the Schemes, MOST Focused Dynamic Equity, MOST Focused Long Term*, MOST Focused Multicap 35, MOST Focused Midcap 30 and MOST Focused 25

- **Risks associated with investing in Equities**

Equity and Equity related instruments on account of its volatile nature are subject to price fluctuations on daily basis. The volatility in the value of the equity and equity related instruments is due to various micro and macro economic factors affecting the securities markets. This may have adverse impact on individual securities/sector and consequently on the NAV of Scheme. The inability of the Scheme to make intended securities purchases due to settlement problems could cause the Scheme to miss certain investment opportunities as in certain cases, settlement periods may be extended significantly by unforeseen circumstances. Similarly, the inability to sell securities held in the Scheme portfolio may result, at times, in potential losses to the Scheme, should there be a subsequently decline in the value of the securities held in the Schemes portfolio.

The Scheme may find itself invested in unlisted securities either by choice or due to external events or corporate actions. This may increase the risk of the portfolio as these unlisted securities are inherently illiquid in nature and carry larger liquidity risk as compared to the listed securities or those that offer other exit options to the investors.

- **Market Risk**

The Scheme's NAV will react to stock market movements. The value of investments in the scheme may go down over a short or long period due to fluctuations in Scheme's NAV in response to factors such as performance of companies whose stock comprises the underlying portfolio, economic and political developments, changes in interest rates, inflation and other monetary factors causing movement in prices of underlining investments.

- **Regulatory Risk**

Any changes in trading regulations by NSE or SEBI may affect the ability of market maker to arbitrage resulting into wider premium/discount to NAV.

- **Right to Limit Redemptions**

The Trustee, in the general interest of the unit holders of the Scheme offered under this SID and keeping in view of the unforeseen circumstances/unusual market conditions, may limit the total number of Units which can be redeemed on any Business Day subject to the guidelines/circulars issued by the Regulatory Authorities from time to time.

- **Asset Class Risk**

The returns from the types of securities in which the Scheme invests may under perform from the various general securities markets or different asset classes. Different types of securities tend to go through cycles of out-performance and under-performance in comparison with the general securities markets.

- **Interest Rate Risk**
 Changes in interest rates will affect the Scheme's Net Asset Value. The prices of securities usually increase as interest rates decline and usually decrease as interest rates rise. The extent of fall or rise in the prices is guided by duration, which is a function of the existing coupon, days to maturity and increase or decrease in the level of interest rate. The new level of interest rate is determined by the rate at which the government raises new money and/or the price levels at which the market is already dealing in existing securities. Prices of long-term securities generally fluctuate more in response to interest rate changes than short-term securities. The price risk is low in the case of the floating rate or inflation-linked bonds. The price risk does not exist if the investment is made under a repo agreement. Debt markets, especially in developing markets like India, can be volatile leading to the possibility of price movements up or down in fixed income securities and thereby to possible movements in the NAV.
- **Credit Risk**
 Credit Risk means that the issuer of a security may default on interest payments or even paying back the principal amount on maturity. (i.e. the issuer may be unable to make timely principal and interest payments on the security). Even where no default occurs, the prices of security may go down because the credit rating of an issuer goes down. It must be, however, noted that where the Scheme has invested in Government securities, there is no risk to that extent.
- **Liquidity or Marketability Risk**
 This refers to the ease at which a security can be sold at or near its true value. The primary measure of liquidity risk is the spread between the bid price and the offer price quoted by a dealer. Liquidity risk is characteristic of the Indian fixed income market. Trading Volumes, settlement periods and transfer procedures may restrict the liquidity of the investments made by the Scheme. Different segments of the Indian financial markets have different settlement periods and such period may be extended significantly by unforeseen circumstances leading to delays in receipt of proceeds from sale of securities. As liquidity of the investments made by the Scheme could, at times, be restricted by trading volumes and settlement periods, the time taken by the Fund for redemption of units may be significant in the event of an inordinately large number of redemption requests or restructuring of the Scheme.
- **Right to Limit Redemptions**
 The Trustee, in the general interest of the unit holders of the Scheme offered under this SID and keeping in view of unforeseen circumstances/unusual market conditions, may limit the total number of Units which can be redeemed on any Business Day. This could also happen in the event of receipt of inordinately large number of redemption requests or a restructuring of a Scheme portfolio.
- **Risks associated with Investing in Derivatives**
 Derivative products are leveraged instruments and can provide disproportionate gains as well as disproportionate losses to the investor. Execution of such strategies depends upon the ability of the fund manager to identify such opportunities. Identification and execution of the strategies to be pursued by the fund manager involve uncertainty and decision of the fund manager may not always be profitable. No assurance can be given that the fund manager will be able to identify or execute such strategies.

Derivative products are specialized instruments that require investment techniques and risk analysis different from those associated with stocks. The use of a derivative requires an understanding not only of the underlying instrument but of the derivative itself. Derivatives require the maintenance of adequate controls to monitor the transactions entered into, the ability

to assess the risk that a derivative adds to the portfolio and the ability to forecast price or interest rate movements correctly. There is a possibility that a loss may be sustained by the portfolio as a result of the failure of another party (usually referred to as the “counterparty”) to comply with the terms of the derivatives contract. Other risks in using derivatives include the risk of mispricing or improper valuation of derivatives and the inability of derivatives to correlate perfectly with underlying assets, rates and indices, illiquidity risk whereby the Scheme may not be able to sell or purchase derivative quickly enough at a fair price. The risks associated with the use of derivatives are different from or possibly greater than, the risks associated with investing directly in securities and other traditional investments.

- **Risk associated with securities lending**

Securities Lending is a lending of securities through an approved intermediary to a borrower under an agreement for a specified period with the condition that the borrower will return equivalent securities of the same type or class at the end of the specified period along with the corporate benefits accruing on the securities borrowed.

In case the Scheme undertakes securities lending as prescribed in the Regulations, it may, at times be exposed to counter party risk and other risks associated with the securities lending. Unitholders of the Scheme should note that there are risks inherent to securities lending, including the risk of failure of the other party, in this case the approved intermediary, to comply with the terms of the agreement entered into between the lender of securities i.e. the Scheme and the approved intermediary. Such failure can result in the possible loss of rights to the collateral put up by the borrower of the securities, the inability of the approved intermediary to return the securities deposited by the lender and the possible loss of any corporate benefits accruing to the lender from the securities deposited with the approved intermediary. The Fund may not be able to sell such lent securities and this can lead to temporary illiquidity.

- **Risk associated with MOVI (Applicable to the scheme, MOST Focused Dynamic Equity)**

The Scheme shall invest a portion of its assets into equity and debt securities based on Motilal Oswal Value Index (MOVI) levels. Hence, the risk associated with the calculation of MOVI and allocations based on MOVI would be applicable to the Scheme. The allocations as per MOVI shall vary due to market conditions. These allocations based on MOVI level may not outperform a fully invested equity portfolio.

- **Risk associated with Investment in foreign securities/overseas investments (Applicable to the Scheme, MOST Focused Multicap 35)**

The Scheme may invest in foreign securities. Such overseas investments will be made subject to necessary approvals, conditions thereof as may be stipulated from time to time. The investment in foreign securities carries an exchange rate risks related to depreciation of foreign currency and country risks. The country risks would include events such as change in regulations or political circumstances like introduction of extraordinary exchange rate controls, restrictions on repatriation of capital due to exchange rate controls, bilateral political tensions leading to immobilisation of overseas financial assets and the prevalent tax laws of the respective jurisdiction for the execution of trades or otherwise.

As the Scheme shall invest in securities listed on the overseas stock exchange, all the risk factors pertaining to overseas stock exchange like market trading risk, liquidity risk and volatility risk, as mentioned earlier, are also applicable to the Scheme. The Scheme will also be exposed to settlement risk, as different countries have different settlement periods.

* As per the provision of lock-in under the ELSS Guidelines, the ability of Unitholders to realize returns in the Scheme is restricted for the first three years from the date of their allotment.

Risk factors for the Scheme, MOSt Ultra Short Term Bond Fund

- **Market Risk**

The Scheme's NAV will react to the interest rate movements. The Investor may lose money over short or long period due to fluctuation in Scheme's NAV in response to factors such as economic and political developments, changes in interest rates, inflation and other monetary factors and also movement in prices of underlining investments.

- **Regulatory Risk**

Any changes in trading regulations by NSE or SEBI may affect the ability of market maker to arbitrage resulting into wider premium/discount to NAV.

- **Right to Limit Redemptions**

The Trustee, in the general interest of the unit holders of the Scheme offered under this SID and keeping in view of the unforeseen circumstances/unusual market conditions, may limit the total number of Units which can be redeemed on any Business Day.

- **Asset Class Risk**

The returns from the types of securities in which the Scheme invests may under perform from the various general securities markets or different asset classes. Different types of securities tend to go through cycles of out-performance and under-performance in comparison with the general securities markets.

- **Interest Rate Risk**

Changes in interest rates will affect the Scheme's Net Asset Value. The prices of securities usually increase as interest rates decline and usually decrease as interest rates rise. The extent of fall or rise in the prices is guided by modified duration, which is a function of the existing coupon, days to maturity and increase or decrease in the level of interest rate. The new level of interest rate is determined by the rate at which the government raises new money and/or the price levels at which the market is already dealing in existing securities. Prices of long-term securities generally fluctuate more in response to interest rate changes than short-term securities. The price risk is low in the case of the floating rate or inflation-linked bonds. The price risk does not exist if the investment is made under a repo agreement. Debt markets, especially in developing markets like India, can be volatile leading to the possibility of price movements up or down in fixed income securities and thereby to possible movements in the NAV.

Modified Duration is a measure of price sensitivity, the change in the value of investment to a 1% change in the yield of the investment.

- **Credit Risk**

Credit Risk means that the issuer of a security may default on interest payments or even paying back the principal amount on maturity. (i.e. the issuer may be unable to make timely principal and interest payments on the security). Even where no default occurs, the prices of security may go down because the credit rating of an issuer goes down. It must be, however, noted that where the Scheme has invested in Government securities, there is no risk to that extent.

- **Liquidity or Marketability Risk**

This refers to the ease at which a security can be sold at or near its true value. The primary measure of liquidity risk is the spread between the bid price and the offer price quoted by a dealer. Liquidity risk is characteristic of the Indian fixed income market. Trading Volumes, settlement periods and transfer procedures may restrict the liquidity of the investments made by the Scheme. Different segments of the Indian financial markets have different settlement periods and such period may be extended significantly by unforeseen circumstances leading to delays in receipt of proceeds from sale of securities. As liquidity of the investments made by the Scheme could, at times, be restricted by trading volumes and settlement periods, the time taken by the Fund for redemption of units may be significant in the event of an inordinately large number of redemption requests or restructuring of the Scheme.

- **Risks associated with short selling**

Scheme may enter into short selling transactions, subject to SEBI and RBI regulations in the matter. This will be done if the fund management team is of the view that there exists an opportunity to make trading gains. Calls for short selling will be taken after considering the liquidity, price movement & volatility of the security by the fund management team. There can be a loss in such a transaction if the price of the security goes up instead of falling down.

Risk Control: Investment by the Scheme would be made as per the investment objective of the Scheme and in accordance with SEBI Regulations. AMC has adequate safeguards to manage risk in the portfolio construction process. Risk control would involve managing risk in order to keep in line with the investment objective of the Scheme. The risk control process would include identifying the risk and taking proper measures for the same. The system has incorporated all the investment restrictions as per the SEBI guidelines and enables identifying and measuring the risk through various risk management tools like various portfolio analytics, risk ratios, average duration and analyses the same and acts in a preventive manner.

PLANS AND OPTIONS

Plans:

Each Scheme has two Plans: Regular Plan and Direct Plan

Regular Plan is for Investors who purchase/subscribe units in a Scheme through any Distributor (AMFI Registered Distributor/ARN Holder).

Direct Plan is for investors who purchase/subscribe units in a Scheme directly with the Fund and is not routed through a Distributor (AMFI Registered Distributor/ARN Holder). Direct Plan will have a lower expense ratio excluding distribution expenses, commission for distribution of Units etc.

There will be no separate portfolio for Direct Plan and Regular Plan. Further, both the options i.e. Growth and Dividend will have common portfolio under the Scheme.

Options:

MOST Focused Long Term	<p>Each Plan offer following Options:</p> <p>(a) Growth Option</p> <p>(b) Dividend Option (with Payout facility)</p> <p>Under Dividend Option, the Fund will endeavor to declare dividends from time to time depending on the availability of</p>
-------------------------------	---

	distributable surplus.
MOST Focused Dynamic Equity, MOST Focused Multicap 35, MOST Focused Midcap 30, MOST Focused 25 and MOST Ultra Short Term Bond Fund	<p>Each Plan offer following Options:</p> <p>(a) Growth Option (b) Dividend Option (with Payout and Re-investment facility)</p> <p>Under Dividend Option, the Fund will endeavor to declare dividends from time to time depending on the availability of distributable surplus.</p> <p>Note: If dividend payable under the dividend payout option is equal to or less than Rs. 500/-, then it would be compulsorily re-invested in the option of the Scheme.</p>

Sub-Options (Under each Dividend Plan):

MOST Focused Dynamic Equity	<p><u>MOST Focused Dynamic Equity offers following sub-options:</u></p> <p>Under the Dividend Payout and Re-investment facility:</p> <p>(i) Quarterly Dividend frequency - the Scheme shall endeavor to declare dividend on a quarterly basis. (ii) Annual Dividend frequency - the Scheme shall endeavor to declare dividend on an annual basis</p>																										
MOST Ultra Short Term Bond Fund	<p><u>MOST Ultra Short Term Bond Fund offers following sub-options:</u></p> <table border="1"> <thead> <tr> <th>Plan</th> <th>Options / Sub-Options</th> <th>Facility</th> <th>Frequency</th> <th>Record Date</th> </tr> </thead> <tbody> <tr> <td rowspan="4">Regular Plan and Direct Plan</td> <td>Dividend</td> <td>Dividend Re-Investment</td> <td>Daily</td> <td>Every business day</td> </tr> <tr> <td>Dividend</td> <td>Dividend Re-Investment</td> <td>Weekly</td> <td>Every Friday*</td> </tr> <tr> <td>Dividend</td> <td>Dividend Re-Investment</td> <td>Fortnightly</td> <td>Every 2nd & 4th Friday* of the month</td> </tr> <tr> <td>Dividend</td> <td>Dividend Re-Investment/Payout</td> <td>Monthly</td> <td>Every last Friday* of the Month</td> </tr> </tbody> </table>					Plan	Options / Sub-Options	Facility	Frequency	Record Date	Regular Plan and Direct Plan	Dividend	Dividend Re-Investment	Daily	Every business day	Dividend	Dividend Re-Investment	Weekly	Every Friday*	Dividend	Dividend Re-Investment	Fortnightly	Every 2nd & 4th Friday* of the month	Dividend	Dividend Re-Investment/Payout	Monthly	Every last Friday* of the Month
Plan	Options / Sub-Options	Facility	Frequency	Record Date																							
Regular Plan and Direct Plan	Dividend	Dividend Re-Investment	Daily	Every business day																							
	Dividend	Dividend Re-Investment	Weekly	Every Friday*																							
	Dividend	Dividend Re-Investment	Fortnightly	Every 2nd & 4th Friday* of the month																							
	Dividend	Dividend Re-Investment/Payout	Monthly	Every last Friday* of the Month																							

		Dividend	Dividend Re- Investment/Payout	Quarterly	Every last Friday* of the Month
*If Friday is a holiday, then the record date shall be the next Business Day.					

The AMC reserves the right to introduce further Plans / Options as and when deemed fit.

Default Plan/Option:

Investors subscribing Units under Direct Plan of a Scheme should indicate “Direct Plan” against the Scheme name in the application form. Investors should also mention “Direct” in the ARN column of the application form. However, in case Distributor code is mentioned in the application form but “Direct Plan” is mentioned against the Scheme name, then the Distributor code will be ignored and the application will be processed under Direct Plan. Further, where application is received without mentioning Distributor code or where “Direct” is mentioned in the ARN Column, then the application will be processed under Direct Plan.

For the Scheme, MOST Focused Dynamic Equity

Investors subscribing Units under Direct Plan of a Scheme should indicate “Direct Plan” against the Scheme name in the application form. Investors should also mention “Direct” in the ARN column of the application form. The table showing various scenarios for treatment of application under “Direct/Regular” Plan is as follows:

Scenario	Broker Code mentioned by the investor	Plan mentioned by the investor	Default Plan to be captured
1	Not mentioned	Not mentioned	Direct
2	Not mentioned	Direct	Direct
3	Not mentioned	Regular	Direct
4	Mentioned	Direct	Direct
5	Direct	Not Mentioned	Direct
6	Direct	Regular	Direct
7	Mentioned	Regular	Regular
8	Mentioned	Not Mentioned	Regular

In cases of wrong/ invalid/ incomplete ARN code mentioned on the application form, the application will be processed under Regular Plan. The AMC shall contact and obtain the correct ARN code within 30 calendar days of the receipt of application form from the investor/ distributor. In case, the correct code is not received within 30 calendar days, the AMC shall reprocess the transaction under Direct Plan from the date of application without any exit load, if applicable.

If the investor does not clearly specify the choice of option at the time of investing, it will be deemed that the investor has opted for Growth option and in case he does not specify payout/re-investment under Dividend option, it will be deemed to be dividend re-investment. In case the frequency is not mentioned under the Dividend option, it will be deemed to be annual dividend.

For the Scheme, MOST Focused Long Term

If the investor does not clearly specify the choice of option at the time of investing, it will be deemed that the investor has opted for Growth option.

For the Schemes, MOST Focused Multicap 35, MOST Focused Midcap 30, MOST Focused 25 and MOST Ultra Short Term Bond Fund

If the investor does not clearly specify the choice of option at the time of investing, it will be deemed that the investor has opted for Growth option and in case he does not specify payout/re-investment under Dividend option, it will be deemed to be dividend re-investment.

APPLICABLE NAV

For subscriptions / purchases / switch- ins for an amount less than Rs. 2,00,000 (Rs. Two lakh only)

For Purchases including switch-ins:

- i. In respect of valid applications received by 3.00 p.m. by the Fund along with a local cheque or a demand draft payable at par at the Official Point(s) of Acceptance where the application is received, the closing NAV of the day on which application is received shall be applicable.
- ii. In respect of valid applications received after 3.00 p.m. by the Fund along with a local cheque or a demand draft payable at par at the Official Point(s) of Acceptance where the application is received, the closing NAV of the following Business Day shall be applicable.
- iii. In respect of valid applications with an outstation cheques or demand drafts not payable at par at the Official Points of Acceptance where the application is received, the closing NAV of day on which the cheque or demand draft is credited shall be applicable.

For subscriptions / purchases / switch- ins amount equal to or greater than Rs. 2,00,000 (Rs. Two lakh only)

- i. In respect of valid applications received for an amount equal to or more than Rs. 2 lakh upto 3.00 p.m. at the Official Point(s) of Acceptance and where the funds for the entire amount of subscription / purchase/switch-ins as per the application are credited to the bank account of the Scheme before the cut-off time i.e. available for utilization before the cut-off time- the closing NAV of the day shall be applicable.
- ii. In respect of valid applications received for an amount equal to or more than Rs. 2 lakh after 3.00 p.m. at the Official Point(s) of Acceptance and where the funds for the entire amount of subscription / purchase as per the application are credited to the bank account of the Scheme before the cut-off time of the next Business Day i.e. available for utilization before the cut-off time of the next Business Day - the closing NAV of the next Business Day shall be applicable.
- iii. Irrespective of the time of receipt of applications for an amount equal to or more than Rs. 2 lakh at the Official Point(s) of Acceptance, where the funds for the entire amount of subscription/purchase/ switch-ins as per the application are credited to the bank account of the Scheme before the cut-off time on any subsequent Business Day i.e. available for utilization before the cut-off time on any subsequent Business Day - the closing NAV of such subsequent Business Day shall be applicable.

It is clarified that all multiple applications for investment at the Unit holders' PAN and holding pattern level in a Scheme (irrespective of amount or the plan/option/sub-option) received on the same Business Day, will be aggregated to ascertain whether the total amount equals to Rs. 2 lakh or more and to determine the applicable Net Asset Value. Transactions in the name of minor received through guardian will not be aggregated with the transaction in the name of same guardian. The

criteria for aggregation of multiple transactions shall be as decided by the AMC at its sole discretion from time to time.

For Redemption/ Repurchases/Switch out

- i. In respect of valid application accepted at an Official Points of Acceptance up to 3 p.m. on a Business Day by the Fund, the closing NAV of that day will be applicable.
- ii. In respect of valid application accepted at an Official Point of Acceptance as listed in the SAI, after 3 p.m. on a Business Day by the Fund, the closing NAV of the next Business Day will be applicable.

MINIMUM APPLICATION AMOUNT / NUMBER OF UNITS

Particulars	MOST Focused Long Term*	MOST Focused Dynamic Equity, MOST Focused Multicap 35, MOST Focused Midcap 30, MOST Focused 25 and MOST Ultra Short Term Bond Fund
Minimum Application Amount	Rs. 500/- and in multiples of Rs. 500/- thereafter.	Rs. 5,000/- and in multiples of Re. 1/- thereafter
Minimum Additional Purchase	Rs. 500/- and in multiples of Rs. 500/- thereafter.	Rs. 1,000/- and in multiples of Re. 1/- thereafter.
Minimum amount for Systematic Investment Plan (SIP)	Minimum installment amount - Rs. 500/ (weekly/fortnightly/monthly /quarterly frequency) and in multiples of Rs. 500/- thereafter. The dates for the Auto Debit Facility shall be on the 1 st , 7 th , 14 th , 21 st and 28 th of every month. In case, the date fixed happens to be a holiday / non-business day, the same shall be affected on the next business day. No Post Dated cheques would be accepted for SIP.	Minimum installment amount - Rs. 1,000/- (weekly/fortnightly/monthly frequency) and Rs. 2,000/- (quarterly frequency) and in multiples of Re. 1/- thereafter. The dates for the Auto Debit Facility shall be on the 1 st , 7 th , 14 th , 21 st and 28 th of every month. In case, the date fixed happens to be a holiday / non-business day, the same shall be affected on the next business day. No Post Dated cheques would be accepted for SIP.
Minimum Redemption Amount	Rs. 500/- and in multiples of Rs. 1/- thereafter or the balance in the unit holder's folio, whichever is lower.	Minimum of Rs. 1,000/- and in multiples of Re. 1/- thereafter or account balance, whichever is lower.

*The switch-in request into MOST Focused Long Term shall be in multiples of Rs. 500/- only. In case of "ALL units" switch-in to MOST Focused Long Term, the switch-in shall be in multiples of Rs. 500/- and the remaining

DESPATCH OF REPURCHASE (REDEMPTION) REQUEST

Within 10 working days of the receipt of the redemption request at the authorised centre of the Motilal Oswal Mutual Fund.

BENCHMARK INDEX

Name of the Scheme	Benchmark
MOST Focused Dynamic Equity	CRISIL Balanced Fund Index
MOST Focused Long Term	Nifty 500 Index
MOST Focused Multicap 35	Nifty 500 Index
MOST Focused Midcap 30	Nifty Free Float Midcap 100 Index
MOST Focused 25	Nifty 50 Index
MOST Ultra Short Term Bond Fund	CRISIL Short Term Bond Fund Index

DIVIDEND POLICY

The Trustees may declare dividend subject to the availability of distributable surplus calculated in accordance with SEBI (Mutual Funds) Regulations, 1996. The actual declaration of dividend and the frequency of distribution will be entirely at the discretion of the Trustees. There is no assurance or guarantee to Unit holders as to the rate of dividend distribution nor that the dividends will be declared regularly, though it is the intention of the Mutual Fund to make regular dividend distribution under the Dividend Plan. The dividend would be paid to the Unitholders whose names appear in the Register of Unitholders as on the record date.

NAME OF THE FUND MANAGER

Name of the Scheme	Name of the Fund Manager /Co-Fund Manager	Tenure of the Fund Manager
MOST Focused Dynamic Equity	Mr. Taher Badshah (Fund Manager for Equity Component)	Taher is managing the Scheme since inception i.e. from September 27, 2016
	Mr. Abhiroop Mukherjee (Fund Manager for Debt Component)	Abhiroop is managing the Scheme since inception i.e. from September 27, 2016
MOST Focused Long Term	Mr. Gautam Sinha Roy (Fund Manager for Equity Component)	Gautam is managing the Scheme since inception i.e. from January 21, 2015. The tenure for which he is managing the Scheme is 1.5 years
	Mr. Abhiroop Mukherjee (Fund Manager for Debt Component)	Abhiroop is managing the Debt Component of the Scheme since inception i.e. January 21, 2015. The tenure for which he is managing the debt component of the Scheme is 1.5 years.
MOST Focused Multicap 35	Mr. Gautam Sinha Roy (Fund Manager for Equity Component)	Gautam is managing the Scheme since inception i.e. from May 5, 2014. The tenure for which he is managing the Scheme is 2 years.
	Mr. Taher Badshah (Co-Fund Manager for Equity Component)	Taher is co-managing the Scheme since May 4, 2015. The tenure for which he is co-managing the Scheme is 1 year.
	Mr. Abhiroop Mukherjee (Fund Manager for Debt Component)	Abhiroop is managing the Debt Component of the Scheme since inception i.e. April 24, 2015. The tenure for which he is managing the debt

		component of the Scheme is 2 years.
	Mr. Swapnil Mayekar (Fund Manager for Foreign Securities)	Swapnil is managing the foreign securities of the Scheme since August 10, 2015. The tenure for which he is managing the foreign securities of the Scheme since 10 months.
MOST Focused Midcap 30	Mr. Taher Badshah (Fund Manager for Equity Component)	Taher is managing the Scheme since inception i.e. from February 24, 2014. The tenure for which he is managing the Scheme is 2.4 years.
	Mr. Abhiroop Mukherjee (Fund Manager for Debt Component)	Abhiroop is managing the Debt Component of the Scheme since inception i.e. February 24, 2014. The tenure for which he is managing the debt component of the Scheme is 2.4 years.
	Mr. Siddharth Bothra (Co-Fund Manager for Equity Component)	Siddharth is co-managing the Scheme since May 4, 2015. The tenure for which he is co-managing the Scheme is 1 year.
MOST Focused 25	Mr. Taher Badshah (Fund Manager for Equity Component)	Taher is managing the Scheme since inception i.e. from May 13, 2013. The tenure for which he is managing the Scheme is 3 years.
	Mr. Abhiroop Mukherjee (Fund Manager for Debt Component)	Abhiroop is managing the Scheme since inception i.e. from May 13, 2013. The tenure for which he is managing the Scheme is 3 years.
	Mr. Siddharth Bothra (Co-Fund Manager for Equity Component)	Siddharth is co-managing the Scheme since May 4, 2015. The tenure for which he is co-managing the Scheme is 1 year.
MOST Ultra Short Term Bond Fund	Mr. Abhiroop Mukherjee	Abhiroop is managing the Scheme since inception i.e. from September 6, 2013. The tenure for which he is managing the Scheme is 2.9 years.

NAME OF TRUSTEE COMPANY

Motilal Oswal Trustee Company Ltd.

PERFORMANCE OF THE SCHEMES

MOST Focused Dynamic Equity

This Scheme is a new scheme and does not have any performance track record.

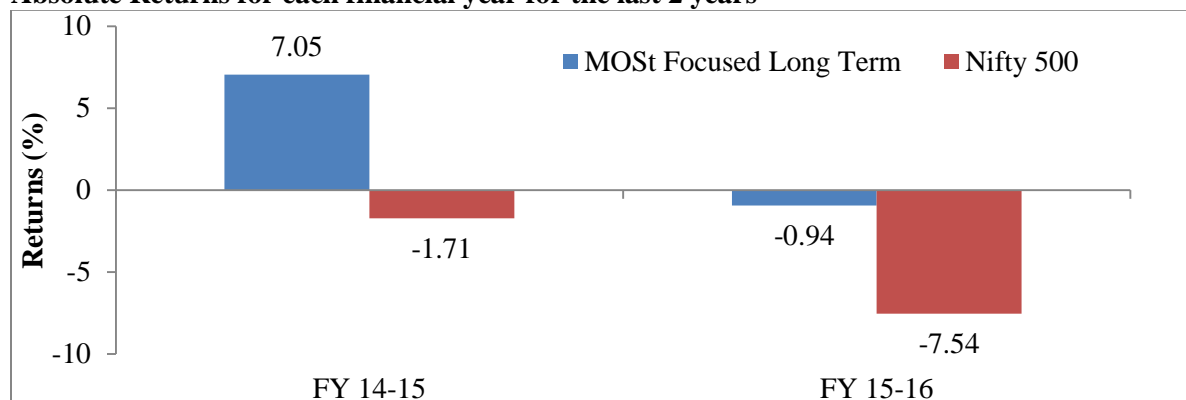
MOST Focused Long Term

Performance of the Scheme as on March 31, 2016:

Compounded Returns	Annualised	Scheme Returns (%)	Benchmark Returns (%)
		MOST Focused Long Term	Nifty 500
Returns for the last 1 year		-0.94	-7.54

Returns since inception	5.05	-7.71
-------------------------	------	-------

Absolute Returns for each financial year for the last 2 years



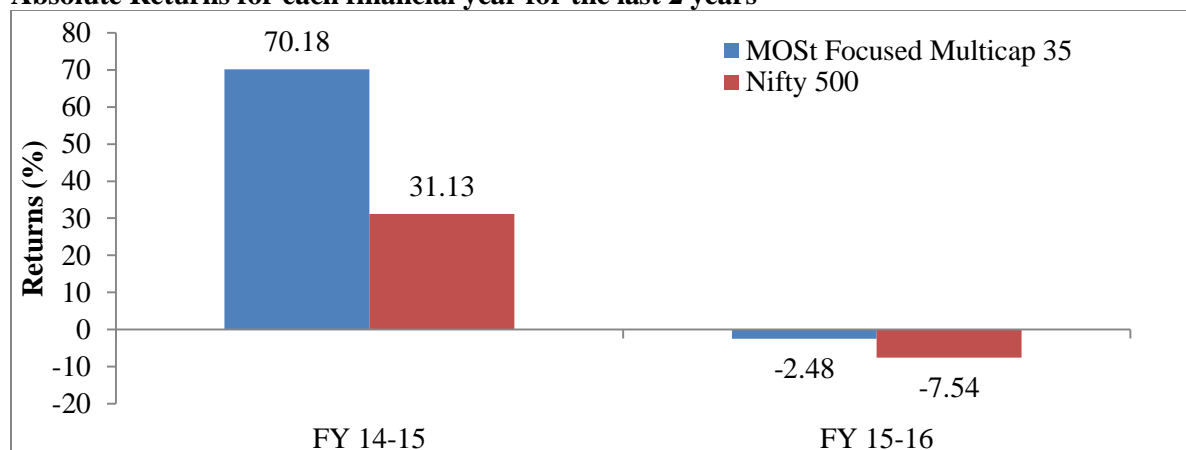
Note: Past performance may or may not be sustained in future. Returns for more than one year are compounded annualized and date of inception is deemed to be date of allotment. Date of Allotment is January 21, 2015.

MOST Focused Multicap 35

Performance of the Scheme as on March 31, 2016:

Compounded Returns	Annualised Returns	Scheme Returns (%)	Benchmark Returns (%)
		MOST Focused Multicap 35	Nifty 500 Index
Returns for the last 1 year		-2.48	-7.54
Returns since inception		30.09	10.52

Absolute Returns for each financial year for the last 2 years



Note: Past performance may or may not be sustained in future. Returns for more than one year are compounded annualized and date of inception is deemed to be date of allotment. Date of Allotment is April 28, 2014.

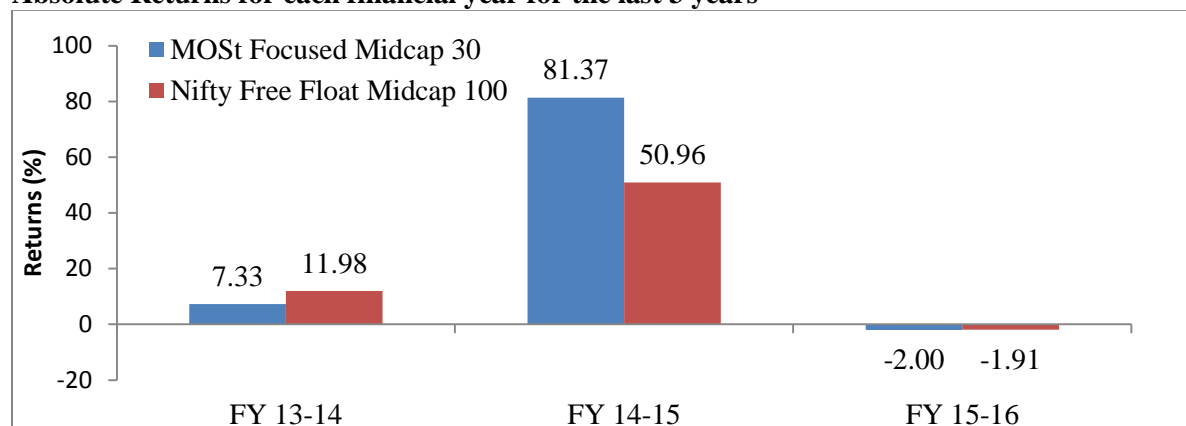
MOST Focused Midcap 30

Performance of the Scheme as on March 31, 2016:

Compounded Returns	Annualised Returns	Scheme Returns (%)	Benchmark Returns (%)
		MOST Focused Midcap 30	Nifty Free Float Midcap 100
Returns for the last 1 year		-2.00	-1.91

Returns since inception	36.04	27.25
-------------------------	-------	-------

Absolute Returns for each financial year for the last 3 years



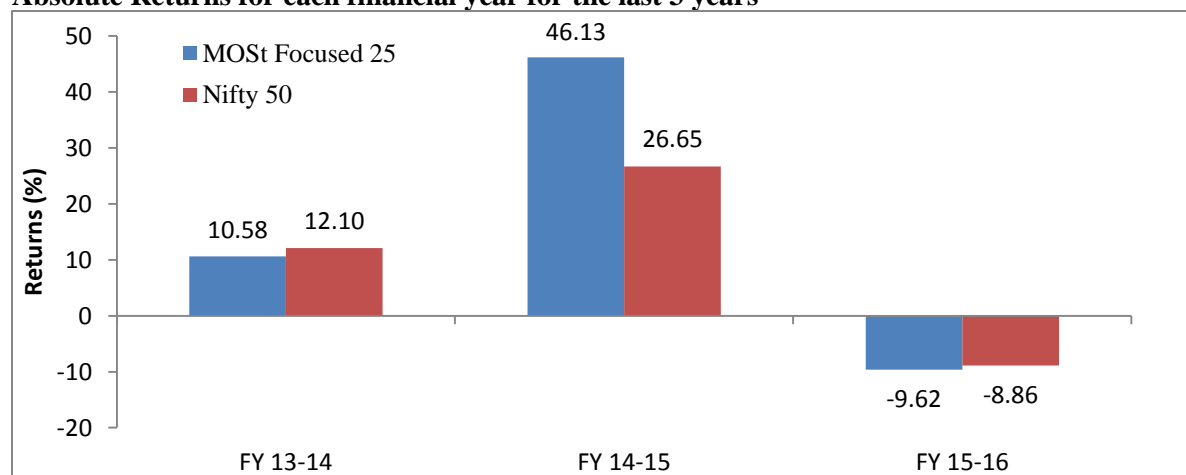
Note: Past performance may or may not be sustained in future. Returns for more than one year are compounded annualized and date of inception is deemed to be date of allotment. Date of Allotment is February 24, 2014.

MOST Focused 25

Performance of the Scheme as on March 31, 2016:

Compounded Annualised Returns	Scheme Returns (%)	Benchmark Returns (%)
	MOST Focused 25	Nifty 50 Index
Returns for the last 1 year	-9.62	-8.86
Returns since inception	14.03	9.34

Absolute Returns for each financial year for the last 3 years



Note: Past performance may or may not be sustained in future. Returns for more than one year are compounded annualized and date of inception is deemed to be date of allotment. Date of Allotment is May 13, 2013.

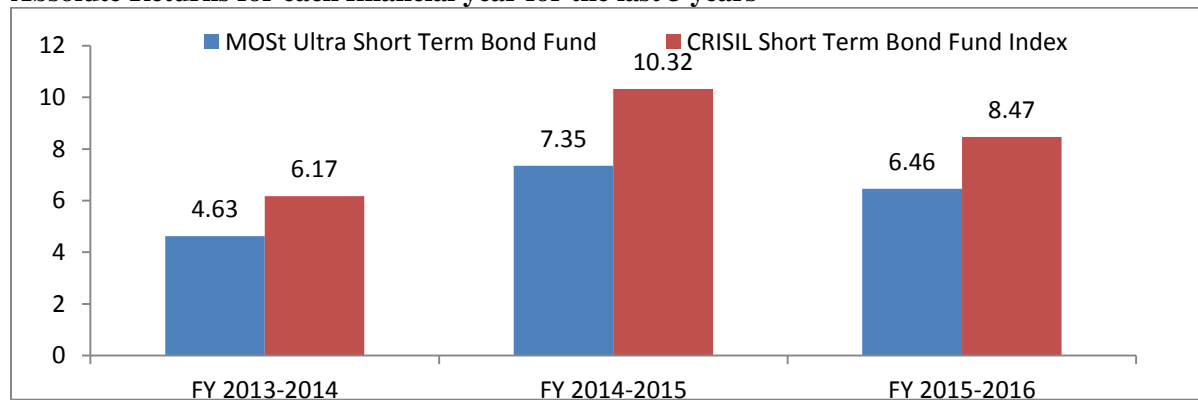
MOST Ultra Short Term Bond Fund

Performance of the Scheme as on March 31, 2016:

Compounded Annualised	Scheme Returns (%)	Benchmark Returns (%)
-----------------------	--------------------	-----------------------

Returns	MOST Ultra Short Term Bond Fund	CRISIL Short Term Bond Fund Index
Returns for the last 1 year	6.46	8.47
Returns since inception	7.38	8.14

Absolute Returns for each financial year for the last 3 years



Note: Past performance may or may not be sustained in future. *Returns are compounded annualized and date of inception is deemed to be date of allotment. Date of Allotment is September 6, 2013.

ADDITIONAL DISCLOSURES

A. Scheme's Portfolio Holdings

The top 10 portfolio holdings of the Scheme as on September 30, 2016 are as follows:

MOST Focused Dynamic Equity	Sr. No.	Top 10 Holdings	% to Net Assets
	1.	HDFC Bank Limited	5.64
2.	Indusind Bank Limited	5.53	
3.	Eicher Motors Limited	4.26	
4.	Hindustan Petroleum Corporation Limited	3.96	
5.	Britannia Industries Limited	3.81	
6.	Interglobe Aviation Limited	3.66	
7.	Bharat Petroleum Corporation Limited	3.58	
8.	Maruti Suzuki India Limited	3.52	
9.	Ajanta Pharma Limited	3.14	
10.	Infosys Limited	3.06	
MOST Focused Long Term	Sr. No.	Top 10 Holdings	% to Net Assets
	1.	IndusInd Bank Limited	9.00
2.	HDFC Bank Limited	8.96	
3.	Eicher Motors Limited	7.17	
4.	Infosys Limited	5.95	
5.	Britannia Industries Limited	5.17	
6.	Interglobe Aviation Limited	5.14	
7.	Bharat Petroleum Corporation Limited	5.03	
8.	Mahanagar Gas Limited	4.75	

	9.	Maruti Suzuki India Limited	4.56
	10.	Gruh Finance Limited	4.33
MOST Focused Multicap 35	Sr. No.	Name of Issuer	% to Net Assets
	1.	HDFC Bank Limited	9.31
	2.	IndusInd Bank Limited	9.22
	3.	Eicher Motors Limited	6.98
	4.	Infosys Limited	6.73
	5.	Hindustan Petroleum Corporation Limited	6.47
	6.	Britannia Industries Limited	6.22
	7.	Bharat Petroleum Corporation Limited	6.07
	8.	Interglobe Aviation Limited	6.04
	9.	Maruti Suzuki India Limited	5.75
	10.	Ajanta Pharma Limited	5.13
MOST Focused Midcap 30	Sr. No.	Name of Issuer	% to Net Assets
	1.	Max Financial Services Limited	9.32
	2.	Amara Raja Batteries Limited	7.44
	3.	Bharat Financial Inclusion Limited	6.63
	4.	Havells India Limited	6.39
	5.	Ajanta Pharma Limited	6.29
	6.	TVS Motor Company Limited	6.18
	7.	CRISIL Limited	6.13
	8.	RepcO Home Finance Limited	5.98
	9.	WABCO India Limited	4.95
	10.	Bajaj Finance Limited	4.26
MOST Focused 25	Sr. No.	Name of Issuer	% to Net Assets
	1.	HDFC Bank Limited	9.47
	2.	Maruti Suzuki India Limited	8.99
	3.	Kotak Mahindra Bank Limited	8.82
	4.	Eicher Motors Limited	8.80
	5.	Britannia Industries Limited	8.45
	6.	Hindustan Petroleum Corporation Limited	7.54
	7.	State Bank of India	7.27
	8.	Max Financial Services Limited	7.17
	9.	Tata Motors Limited	6.73
	10.	Lupin Limited	5.41
MOST Ultra Short Term Bond Fund	Sr. No.	Top 10 Holdings	% to Net Assets
	1	Export Import Bank Of India	8.18
	2	Small Industries Development Bank	8.14

		of India	
	3	National Bank for Agriculture and Rural Development	6.23
	4	Andhra Bank	6.13
	5	Punjab & Sind Bank	6.13
	6	Bank of Maharashtra	6.13
	7	Housing Development Finance Corporation Limited	4.17
	8	IDBI Bank Limited	4.10
	9	Canara Bank	4.09
	10	ICICI Bank Limited	4.09

B. Sector Allocation of the Scheme

Sector Allocation of the Scheme as recommended by AMFI is as follows: (As on September 30, 2016)

MOST Focused Dynamic Equity	Sectors		% Exposure
	Banks		14.22
	Consumer Non-Durables		9.36
	Pharmaceuticals		8.09
	Auto		7.78
	Petroleum Products		7.54
	Finance		5.64
	Crisil Aaa		4.62
	Transportation		3.66
	Sovereign		3.10
Software		3.06	
MOST Focused Long Term	Sector	% Exposure	
	Banks	21.48	
	Consumer Non-Durables	15.07	
	Auto	11.74	
	Finance	11.18	
	Petroleum Products	10.50	
	Pharmaceuticals	10.14	
	Software	5.95	
	Transportation	5.14	
	Gas	4.75	
	Pesticides	2.90	
MOST Focused Multicap 35	Sectors		% Exposure
	Banks	23.51	
	Consumer Non-Durables	13.95	
	Pharmaceuticals	13.08	
	Auto	12.73	

	Petroleum Products	12.55
	Finance	9.35
	Software	6.73
	Transportation	6.04
	Industrial Products	1.57
	Cash & Equivalent	0.48
MOST Focused Midcap 30		
	Sector	% Exposure
	Finance	36.37
	Auto Ancillaries	12.38
	Pharmaceuticals	10.34
	Consumer Durables	6.39
	Consumer Non-Durables	9.92
	Auto	6.18
	Software	5.31
	Banks	3.05
	Industrial Capital Goods	2.81
	Cement	2.39
MOST Focused 25		
	Sectors	% Exposure
	Banks	29.80
	Auto	24.51
	Finance	11.57
	Consumer Non Durables	8.45%
	Petroleum Products	7.54%
	Pharmaceuticals	5.41%
	Software	4.42%
	Transportation	4.31%
	Chemicals	3.74%
	Cash & Equivalent	0.25%
MOST Ultra Short Term Bond Fund		
	Sector	% Exposure
	Bank	53.22%
	Non-Banking Financial Company	4.17%
	CBLO / Reverse Repo Investments	6.27%
	Cash & Cash Equivalents	1.86%

The Mutual Fund will disclose the portfolio of the Scheme as on the last day of the month on AMC's website (www.motilaloswalmf.com and www.mostshares.com) on or before the tenth day of the succeeding month. The Investors will be able to view and download this monthly portfolio from the AMC's website on the following link <http://motilaloswalmf.com/downloads/mutual-fund/Month-End-Portfolio>.

C. Scheme's Portfolio Turnover Ratio

The Portfolio Turnover Ratio of the Schemes as on September 30, 2016 is as follows:

Scheme Name	Portfolio Turnover Ratio
MOST Focused Dynamic Equity	Not Applicable. Since, the Scheme is a new Scheme.
MOST Focused Long Term	0.86
MOST Focused Multicap 35	0.61
MOST Focused Midcap 30	0.54
MOST Focused 25	0.89
MOST Ultra Short Term Bond Fund	Not Applicable

D. Illustration of impact of expense ratio on returns of the Scheme

Particulars	Amount (Rs.)
Invested amount (Rs)	10,000
Annualised scheme performance	10%
Net Assets before expenses (Rs)	11,000
Annualised expense ratio*	2.5%
Net Assets after expenses (Rs)	10,725
Returns on invested amount before expenses (Rs)	1,000
Returns on invested amount after expenses (Rs)	725
Returns on invested amount before expenses (%)	10.00%
Returns on invested amount after expenses (%)	7.25%

The figures stated above are for illustration purposes only.

E. Investment Disclosure

The aggregate investment in the Scheme by the following person as on September 30, 2016 is as follows:

Categories	MOST Focused Dynamic Equity	MOST Focused Long Term	MOST Focused Multicap 35	MOST Focused Midcap 30	MOST Focused 25	MOST Ultra Short Term Bond Fund
Directors of AMC	NIL	392,151.00	3,097,633,420.36	1,129,509,359.88	65,356.52	400.37
Fund Manager of the Scheme	NIL	1,020,332.36	1,405,835.91	372,917.53	53,734.05	NIL
Other Key Managerial Personnel	NIL	222,348.03	2,884,564.45	1,333,216.00	1,279,904.41	NIL

EXPENSES OF THE SCHEME

(1) Load Structure:

Type of load	Load Chargeable (as %age of NAV)
---------------------	---

Entry	Nil
Exit	Nil

(2) Recurring Expenses:

For the Schemes, MOST Focused Dynamic Equity, MOST Focused Long Term, MOST Focused Multicap 35, MOST Focused Midcap 30 and MOST Focused 25

These are the fees and expenses for operating the Scheme. These expenses include but are not limited to Investment Management and Advisory Fee charged by the AMC, Registrar and Transfer agents' fees & expenses, marketing and selling costs etc.

The AMC has estimated that the following expenses will be charged to the Scheme, as permitted under Regulation 52 of SEBI (MF) Regulations. For the actual current expenses being charged, the investor should refer to the website of the Fund.

Particulars	% p.a. of daily Net Assets
Investment Management and Advisory Fees	Upto 2.50%
Trustee fee	
Audit fees	
Custodian fees	
Registrar & Transfer Agent Fees	
Marketing & Selling expense including agents' commission	
Cost related to investor communications	
Cost of fund transfer from location to location	
Cost of providing account statements and dividend/ redemption cheques and warrants	
Costs of statutory Advertisements	
Cost towards investor education & awareness (at least 2 bps)	
Brokerage & transaction cost over and above 12 bps and 5 bps for cash and derivative market trades respectively	
Service tax on expenses other than investment management and advisory fees	
Service tax on brokerage and transaction cost	
Other Expenses	
Maximum total expense ratio (TER) permissible under Regulation 52 (6)	Upto 2.50%
Additional expenses under regulation 52 (6A) (c)	Upto 0.20%
Additional expenses for gross new inflows from specified cities under Regulation 52 (6A)(b)	Upto 0.30%

The purpose of the above table is to assist the investor in understanding the various costs & expenses that the investor in the Scheme will bear directly or indirectly. These estimates have been made in good faith as per the information available to the AMC and the above expenses (including investment management and advisory fees) are subject to inter-se change and may increase/decrease as per actual and/or any change in the Regulations, as amended from time to time.

The TER of the Direct Plan will be lower to the extent of the distribution expenses/commission which is charged in the Regular Plan.

The recurring expenses of the Scheme (excluding additional expenses under regulation 52(6A)(c) and additional distribution expenses for gross inflows from specified cities), as per SEBI Regulations are as follows:

- (i) On the first Rs. 100 crores of the daily net assets - 2.50%
- (ii) On the next Rs. 300 crores of the daily net assets - 2.25%
- (iii) On the next Rs. 300 crores of the daily net assets - 2.00%
- (iv) On the balance of the assets - 1.75%

In accordance with Regulation 52(6A), the following expenses can be charged in addition to the existing total recurring expenses charged under Regulation 52(6):

- a. brokerage and transaction costs which are incurred for the purpose of execution of trade and is included in the cost of investment, not exceeding 0.12 % in case of cash market transactions and 0.05 % in case of derivatives transactions;

Any payment towards brokerage and transaction costs, over and above the said 12 bps and 5 bps for cash market and derivatives transactions respectively, shall be charged to the Scheme within the total recurring expenses limit specified under Regulation 52 of SEBI Regulations. Any expenditure in excess of the said limit will be borne by the AMC/Trustees/Sponsors.

- b. additional expenses upto 30 basis points on daily net assets of the scheme, if the new inflows from such cities as specified by SEBI from time to time are at least: (a) 30% of gross new inflows in the scheme or (b) 15% of the average assets under management (year to date) of the scheme, whichever is higher.

In case, the inflows from such cities is less than the higher of (a) or (b) above, such additional expenses on daily net assets of the scheme will be charged on a proportionate basis.

The expenses charged under this clause shall be utilised for distribution expenses incurred for bringing inflows from such cities

The amount incurred as expenses on account of inflows from such cities so charged shall be credited back to the Scheme in case, the said inflows are redeemed within a period of 1 year from the date of investment.

Currently, SEBI has specified that the above additional expenses may be charged for inflows from beyond „Top 15 cities.’ The top 15 cities shall mean top 15 cities based on Association of Mutual Funds in India (AMFI) data on „AUM by Geography – Consolidated Data for Mutual Fund Industry’ as at the end of the previous financial year.

- c. additional expenses not exceeding 0.20% of daily net assets of the scheme, towards investment & advisory fees and/or towards recurring expenses as specified under 52(2) and 52(4) of the Regulations.

In addition to expenses under Regulation 52(6) and (6A), AMC may charge service tax on investment and advisory fees, expenses other than investment and advisory fees and brokerage and transaction cost as below:

1. Service tax on investment and advisory fees charged to the scheme will be in addition to the maximum limit of TER as prescribed in regulation 52 (6) of the SEBI Regulations.
2. Service tax on other than investment and advisory fees, if any, shall be borne by the scheme within the maximum limit of TER as per regulation 52 of the SEBI Regulations.
3. Service tax on exit load, if any, will be paid out of the exit load proceeds and exit load net of service tax, if any, shall be credited to the scheme.
4. Service tax on brokerage and transaction cost paid for execution of trade, if any, shall be within the limit prescribed under regulation 52 of the SEBI Regulations.

The Direct Plan shall have a lower expense ratio to the extent of distribution expenses, commission, etc. and no commission for distribution of Units will be paid / charged under the Direct Plan.

The AMC shall charge the investment management and advisory fees and the total recurring expenses of the Scheme in accordance with the limits prescribed from time to time under the SEBI Regulations. Expenses over and above the prescribed ceiling will be borne by the AMC / Trustee / Sponsor.

The current expense ratios will be updated on the Fund's website, www.motilaloswalmf.com within two working days mentioning the effective date of the change.

For the Scheme, MOSt Ultra Short Term Bond Fund

SEBI has prescribed the maximum annual recurring expenses that can be charged to the Scheme. Annual Scheme Recurring Expenses shall be within the limits stated in Regulations 52(6) and subject to a percentage limit of Daily Net Assets as in the table below:

First Rs.100 crore	Next Rs.300 crore	Next Rs.300 crore	on the balance of the assets
2.25%	2.00%	1.75%	1.50%

The total expenses of the scheme as per Regulation 52(6) schemes shall not exceed 2.25 per cent of the daily net assets of the scheme as stated below and are subject to inter-se change and may increase/decrease as per actuals, and/or any change in the Regulations:

Expense Head	% of daily Net Assets
Investment Management and Advisory Fees	Upto 2.25%
Trustee fee	
Audit fees	
Custodian fees	
RTA Fees	
Marketing & Selling expense incl. agent commission	
Cost related to investor communications	
Cost of fund transfer from location to location	
Cost of providing account statements and dividend redemption cheques and warrants	
Costs of statutory Advertisements	
Cost towards investor education & awareness (at least 2 bps)	
Brokerage & transaction cost over and above 12 bps for cash trades.	
Service tax on expenses other than investment and advisory fees	
Service tax on brokerage and transaction cost	

Other Expenses	
Maximum total expense ratio (TER) permissible under Regulation 52(6) (a) and (6) (c) (ii)	Upto 2.25%
Additional expenses under regulation 52 (6A) (c)	Upto 0.20%
Additional expenses for gross new inflows from specified cities	Upto 0.30%

Any expenditure in excess of the limits specified in the SEBI Regulations shall be borne by the AMC.

Service Tax:

1. The scheme may charge service tax on investment and advisory fees to the scheme in addition to the maximum limit of TER as prescribed in regulation 52 of the Regulations.
2. Service tax on other than investment and advisory fees, if any, shall be borne by the scheme within the maximum limit of TER as per regulation 52 of the Regulations.
3. Service tax on exit load, if any, shall be paid out of the exit load proceeds and exit load net of service tax, if any, shall be credited to the scheme.
4. Service tax on brokerage and transaction cost paid for asset purchases, if any, shall be within the limit prescribed under regulation 52 of the Regulations.

In addition to the limits as specified in Regulation 52(6) of SEBI (Mutual Funds) Regulations 1996 or the Total Recurring Expenses (Total Expense Limit) as specified above, the following costs or expenses may be charged to the scheme:

Additional TER can be charged up to 30 basis points on daily net assets of the scheme as per regulation 52 of SEBI (Mutual Funds) Regulations, 1996 (hereinafter referred to as Regulations), if the new inflows from beyond top 15 cities are at least (a) 30% of gross new inflows in the scheme or (b) 15% of the average assets under management (year to date) of the scheme, whichever is higher. Provided that expenses charged under this clause shall be utilised for distribution expenses incurred for bringing inflows from such cities

In case inflows from beyond top 15 cities is less than the higher of (a) or (b) above, additional TER on daily net assets of the scheme shall be charged as follows:

Daily net assets X 30 basis points X New inflows from beyond top 15 cities
365* X Higher of (a) or (b) above

* 366, wherever applicable.

The top 15 cities shall mean top 15 cities based on Association of Mutual Funds in India (AMFI) data on „AUM by Geography – Consolidated Data for Mutual Fund Industry’ as at the end of the previous financial year.

The additional TER on account of inflows from beyond top 15 cities so charged shall be clawed back in case the same is redeemed within a period of 1 year from the date of investment.

Mutual funds/AMCs shall make complete disclosures in the half yearly report of Trustees to SEBI regarding the efforts undertaken by them to increase geographical penetration of mutual funds and the details of opening of new branches, especially at locations beyond top 15 cities.

The current expense ratios will be updated on the Fund's website, www.motilaloswalmf.com within two working days mentioning the effective date of the change.

Investors applying for subscription of Units offered under the respective Series directly with the Fund (i.e. not routed through any distributor/agent) hereinafter referred to as 'Direct Plan' will be subject to a lower expense ratio excluding distribution expenses, commission, etc and no commission for distribution of Units will be paid / charged under Direct Plan and therefore, shall not in any manner be construed as an investment advice offered by the Mutual Fund/AMC. The subscription of Units through Direct Plan is a facility offered to the investor only to execute his/her/ their transactions at a lower expense ratio. Before making an investment decision, Investors are advised to consult their own investment and other professional advisors.

Actual expenses for the previous financial year 2015-16:

Scheme Name	Regular Plan (%)	Direct Plan (%)
MOSSt Focused Long Term	3.24	1.77
MOSSt Focused Multicap 35	2.46	1.63
MOSSt Focused Midcap 30	2.83	1.62
MOSSt Focused 25	2.94	1.65
MOSSt Ultra Short Term Bond Fund	1.00	0.55

WAIVER OF LOAD FOR DIRECT APPLICATIONS

Not Applicable

TAX TREATMENT FOR THE INVESTORS (UNITHOLDERS)

Investors are advised to refer to the details in the Statement of Additional Information and also independently refer to their tax advisors.

DAILY NET ASSET VALUE (NAV) PUBLICATION

The NAV of the Scheme will be declared on all business days and will be published at least in two daily newspapers. The NAV can also be viewed on the website www.motilaloswalmf.com and AMFI website www.amfiindia.com.

FOR INVESTOR GRIEVANCES PLEASE CONTACT

Registrar	Motilal Oswal Mutual Fund
Karvy Computershare Pvt. Ltd. Karvy Plaza, H. No. 8-2-596, Avenue 4, Street No. 1, Banjara Hills, Hyderabad-500034 Tel No.: 040-23320751/752/753 E-mail Id: motilal.karvy@karvy.com	Mr. Nilesh Chonkar - Investor Relation Officer 10 th Floor, Motilal Oswal Tower, Rahimtullah Sayani Road, Opp. Parel ST Depot, Prabhadevi, Mumbai – 400 025 Tel No.: 1800-200-6626 Fax No.: 022 3089 6884 Email Id: mfservice@motilaloswal.com

UNITHOLDERS INFORMATION

Under Regulation 36(4) of SEBI (Mutual Funds) Regulations, 1996, the AMC/ RTA is required to send consolidated account statement for each calendar month to all the investors in whose folio, transaction has taken place during the month. Further, SEBI vide its circular having ref. no. CIR/MRD/DP/31/2014 dated November 12, 2014, in order to enable a single consolidated view of all the investments of an investor in Mutual Fund and securities held in demat form with Depositories, has required Depositories to generate and dispatch a single consolidated account statement for investors having mutual fund investments and holding demat accounts.

In view of the said requirements the account statements for transactions in units of the Fund by investors will be dispatched to the investors in following manner:

I. Investors who do not hold Demat Account

Consolidated Account Statements (CAS), based on PAN of the holders, shall be sent by AMC/ RTA to investors not holding demat account, for each calendar month within 10th day of the succeeding month to the investors in whose folios, transactions have taken place during that month.

CAS shall be sent by AMC/RTA every half yearly (September/ March), on or before 10th day of succeeding month, detailing holding at the end of the six month, to all such investors in whose folios there have been no transactions during that period.

CAS sent by AMC/RTA is a statement containing details relating to all financial transactions made by an investor across all mutual funds viz. purchase, redemption, switch, dividend payout, dividend reinvestment, systematic investment plan, systematic withdrawal plan, systematic transfer plan, bonus etc. (including transaction charges paid to the distributor) and holding at the end of the month.

II. Investors who hold Demat Account

CAS, based on PAN of the holders, shall be sent by Depositories to investors holding demat account, for each calendar month within 10th day of the succeeding month to the investors in whose folios, transactions have taken place during that month.

CAS shall be sent by Depositories every half yearly (September/March), on or before 10th day of succeeding month, detailing holding at the end of the six month, to all such investors in whose folios and demat accounts there have been no transactions during that period.

In case of demat accounts with nil balance and no transactions in securities and in mutual fund folios, the depository shall send account statement in terms of regulations applicable to the depositories.

CAS sent by Depositories is a statement containing details relating to all financial transactions made by an investor across all mutual funds viz. purchase, redemption, switch, dividend payout, dividend reinvestment, systematic investment plan, systematic withdrawal plan, systematic transfer plan, bonus etc. (including transaction charges paid to the distributor) and transaction in dematerialised securities across demat accounts of the investors and holding at the end of the month.

Following provisions shall be applicable to CAS sent through AMC/ RTA and CAS sent through depositories:

- i. Investors are requested to note that for folios which are not included in the CAS, AMC shall henceforth issue monthly account statement to the unit holders, pursuant to any financial transaction done in such folios; the monthly statement will be sent on or before 10th day of succeeding month. Such statements shall be sent in physical form if no email id is provided in the folio.
- ii. The statement sent within the time frame mentioned above is provisional and is subject to realisation of payment instrument and/or verification of documents, including the application form, by the RTA/AMC
- iii. In the event the folio/demat account has more than one registered holder, the first named Unit holder/Account holder shall receive the CAS (AMC/RTA or Depository). For the purpose of CAS (AMC/RTA or Depository), common investors across mutual funds/depositories shall be identified on the basis of PAN. Consolidation shall be based on the common sequence/order of investors in various folios/demat accounts across mutual funds / demat accounts across depository participants.
- iv. Investors whose folio(s)/demat account(s) are not updated with PAN shall not receive CAS. Investors are therefore requested to ensure that their folio(s)/demat account(s) are updated with PAN.
- v. For Unit Holders who have provided an e-mail address in KYC records, the CAS will be sent by e-mail.
- vi. The Unit Holder may request for a physical account statement by writing to/calling the AMC/RTA. In case of a specific request received from the unit holders, the AMC/RTA shall provide the account statement to the unit holders within 5 business days from the receipt of such request.
- vii. Account Statements shall not be construed as proof of title and are only computer printed statements indicating the details of transactions under the Schemes during the current financial year and giving the closing balance of Units for the information of the Unit Holder.
- viii. Non-transferable Unit Certificates will be sent, if an applicant so desires, within 5 Business Days of the receipt of a request for the certificate. Unit Certificates will not be issued for any fractional Units entitlement.
- ix. Units held, either in the form of Account Statement or Unit Certificates, are non-transferable. The Trustee reserves the right to make the Units transferable at a later date subject to SEBI (MF) Regulations issued from time to time.
- x. In case an investor has multiple accounts across two Depositories, the depository with whom the account has been opened earlier will be the default Depository.

For SIP/STP/SWP transactions:

Account Statement for SIP/STP/SWP will be despatched once every quarter ending March, June, September and December within 10 working days of the end of the respective quarter.

A soft copy of the Account Statement shall be mailed to the investors under SIP/STP/SWP to their e-mail address on a monthly basis, if so mandated.

However, the first Account Statement under SIP/STP/SWP shall be issued within 10 working days of the initial investment/transfer.

In case of specific request received from investors, Mutual Funds shall provide the account statement to the investors within 5 working days from the receipt of such request without any charges.

Annual Account Statement:

The Mutual Fund shall provide the Account Statement to the Unitholders who have not transacted during the last six months prior to the date of generation of account statements. The Account Statement shall reflect the latest closing balance and value of the Units prior to the date of generation of the account statement, The account statements in such cases may be generated and issued along with the Portfolio Statement or Annual Report of the Scheme. Alternately, soft copy of the account statements shall be mailed to the investors' e-mail address, instead of physical statement, if so mandated.

Note: If the investor(s) has/have provided his/their email address in the application form or any subsequent communication in any of the folio belonging to the investor(s), Mutual Fund / Asset Management Company reserves the right to use Electronic Mail (email) as a default mode to send various communication which include account statements for transactions done by the investor(s). The investor shall from time to time intimate the Mutual Fund / its Registrar and Transfer Agents about any changes in the email address.

Monthly Portfolio Disclosures:

The Mutual Fund shall disclose the portfolio of the Scheme as on the last day of the month on AMC's website (www.mostshares.com and www.motilaloswalmf.com) on or before the tenth day of the succeeding month. The Investors will be able to view and download this monthly portfolio from the AMC's website.

Half yearly Disclosures: Portfolio / Financial Results:

The Mutual Fund shall publish a complete statement of the Scheme portfolio within one month from the close of each half year (i.e. 31st March and 30th September), by way of an advertisement at least, in one national English daily and one regional newspaper in the language of the region where the head office of the Mutual Fund is located. The Mutual Fund may opt to send the portfolio to all Unit holders in lieu of the advertisement (if applicable). The Portfolio Statement will also be displayed on the website of the AMC/Mutual Fund and AMFI.

Further, the Mutual Fund shall within one month from the close of each half year, that is on 31st March and on 30th September, host a soft copy of its unaudited financial results on its website. The mutual fund shall publish an advertisement disclosing the hosting of such financial results on their website, in atleast one English daily newspaper having nationwide circulation and in a newspaper having wide circulation published in the language of the region where the Head Office of the Mutual Fund is situated.

Annual Report:

The Scheme wise Annual Report or an abridged summary thereof shall be mailed/e-mailed to all the Unitholders of the Scheme, not later than four months from the date of closure of relevant financial year i.e. March 31 each year.

The scheme wise Annual Report or an abridged summary thereof shall be sent (i) by e-mail to the Unitholders whose e-mail address is available with the Fund and (ii) in physical copy to the Unitholders whose e-mail address is not available with the Fund and/or those Unitholders who have opted/requested for the same.

Further, the annual report will be available for inspection at the registered office of the AMC and copy shall be made available on specific request. Also, the Scheme wise annual report and an abridged summary thereof shall be displayed on our website www.motilaloswalmf.com and AMFI's website www.amfiindia.com and the link of the same will be displayed prominently on the website of the Fund.

SPECIAL PRODUCTS AVAILABLE

I. Systematic Investment Plan (SIP)

During Continuous Offer, a Unit holder may enrol for Systematic Investment Plan (SIP) and choose to invest specified sums in the Scheme on periodic basis by giving a single instruction.

SIP allows investors to invest a fixed amount of Rupees on specific dates on periodic basis by purchasing Units of the Scheme at the Purchase Price prevailing at such time.

The terms and conditions for investing in SIP are as follows:

Particulars	MOST Focused Long Term <i>(This shall be subject to compulsory lock in period of 3 years and subject to ELSS guidelines.)</i>	MOST Focused Dynamic Equity, MOST Focused Multicap 35, MOST Focused Midcap 30, MOST Focused 25 and MOST Ultra Short Term Bond Fund
Minimum amount per SIP installment under Weekly / Fortnightly / Monthly / Quarterly SIP	Rs. 500 and multiple of Rs.500/- thereafter	Rs. 1,000/- and multiple of Re. 1/- thereafter for Weekly / Fortnightly / Monthly SIP and Rs. 2,000/- and multiple of Re. 1/- thereafter for Quarterly SIP
No. of SIP Installments a) Minimum	Twelve installments (Weekly / Fortnightly / Monthly/ Quarterly)	Six installments (Weekly/Fortnightly/Monthly) Three installments (Quarterly)
b) Maximum	No Limit	No Limit
Periodicity	Weekly / Fortnightly / Monthly / Quarterly	
Dates available for SIP Facility	1 st , 7 th , 14 th , 21 st or 28 th of every month. In case, the date fixed happens to be a holiday / non-business day, the same shall be affected on the next business day. No Post Dated cheques would be accepted for SIP.	
Applicable NAV and Cut-off time	Applicable NAV and cut-off time as prescribed under the Regulation shall be applicable.	

The Trustee/AMC reserves the right to change/modify the terms and conditions of the SIP.

II. Systematic Transfer Plan (STP)

During Continuous Offer, a Unit holder may enrol for Systematic Transfer Plan (STP) and choose to switch from this Scheme to another Option or Scheme (other than Exchange Traded Funds) of the Mutual Fund, which is available for investment at that time.

This facility enables Unit holders to transfer fixed amount periodically from their Unit holdings in the Scheme (Transferor Scheme) to the other schemes (Transferee Scheme) of the Mutual Fund.

The terms and conditions for investing in STP are as follows:

Particulars	MOST Focused Long Term <i>(This shall be subject to compulsory lock in period of 3 years and subject to ELSS guidelines.)</i>	MOST Focused Dynamic Equity, MOST Focused Multicap 35, MOST Focused Midcap 30, MOST Focused 25 and MOST Ultra Short Term Bond Fund
Minimum amount per STP installment under Weekly / Fortnightly / Monthly / Quarterly SIP	Rs. 500/- and multiple of Re. 1/- thereafter.	Rs. 1,000/- and multiple of Re. 1/- thereafter for Weekly / Fortnightly / Monthly STP and Rs. 2,000/- and multiple of Re. 1/- thereafter for Quarterly STP
No. of STP Installments a) Minimum	Twelve installments (Weekly / Fortnightly / Monthly / Quarterly)	Six installments (Weekly/Fortnightly/Monthly) Three installments (Quarterly)
b) Maximum	No Limit	No Limit
Periodicity	Weekly / Fortnightly / Monthly / Quarterly	
Dates available for STP Facility	1 st , 7 th , 14 th , 21 st or 28 th of every month. In case, the date fixed happens to be a holiday / non-business day, the same shall be affected on the next business day. No Post Dated cheques would be accepted for SIP.	
Applicable NAV and Cut-off time	Applicable NAV and cut-off time as prescribed under the Regulation shall be applicable.	

The Trustee/AMC reserves the right to change/modify the terms and conditions of the STP.

III. Systematic Withdrawal Plan (SWP):

Investors can use the SWP facility for regular inflows. Withdrawals can be made by informing the AMC or Registrar of the specified withdrawal dates and minimum amount as per the table below. The amount will be converted into units at the applicable repurchase price on that date and will be subtracted from the units with the unit holder. The AMC may close a unit holder's account if the balance falls below the specified minimum amount for the scheme. Unit holders may change the amount indicated in the SWP, subject to the minimum amount specified. The SWP may be terminated on written notice from the unit holder and it will terminate automatically when all the units of the unit holder are liquidated or withdrawn from the account.

The features of Systematic Withdrawal Plan (SWP) are as under:

Particulars	MOST Focused Long Term <i>(This shall be subject to compulsory lock in period of 3 years and subject to ELSS guidelines.)</i>	MOST Focused Dynamic Equity, MOST Focused Multicap 35, MOST Focused Midcap 30, MOST Focused 25 and MOST Ultra Short Term Bond Fund
Minimum amount per SWP installment under Weekly / Fortnightly / Monthly / Quarterly SIP	Rs. 500/- and multiple of Re. 1/- thereafter.	Rs. 1,000/- and multiple of Re. 1/- thereafter for Weekly / Fortnightly / Monthly SWP and Rs. 2,000/- and multiple of Re. 1/- thereafter for Quarterly SWP
No. of SWP Installments a) Minimum	Twelve installments (Weekly / Fortnightly / Monthly/ Quarterly)	Six installments (Weekly/Fortnightly/Monthly) Three installments (Quarterly)
b) Maximum	No Limit	No Limit
Periodicity	Weekly / Fortnightly / Monthly / Quarterly	
Dates available for SWP Facility	1 st , 7 th , 14 th , 21 st or 28 th of every month. In case, the date fixed happens to be a holiday / non-business day, the same shall be affected on the next business day. No Post Dated cheques would be accepted for SIP.	
Applicable NAV and Cut-off time	Applicable NAV and cut-off time as prescribed under the Regulation shall be applicable.	

The Trustee/AMC reserves the right to change/modify the terms and conditions of the SIP.

IV. Motilal Oswal Value Index (MOVI) Pack Plan:

(Applicable to the Schemes, MOST Focused Multicap 35, MOST Focused Midcap 30, MOST Focused 25 and MOST Ultra Short Term Bond Fund)

Motilal Oswal Value Index (MOVI) Pack Plan is a Systematic Transfer Plan (STP) from select debt/liquid scheme into select equity scheme that enables allocation between debt and equity asset classes. It allows Unit holders holding units in non-demat form to take advantage of fluctuations in equity market valuations and not just market levels based on MOVI. Under this facility, Investors may opt to transfer amounts from Motilal Oswal MOST Ultra Short Term Bond Fund (referred to as Transferor Scheme) to Motilal Oswal MOST Focused 25 Fund (MOST Focused 25), Motilal Oswal MOST Focused Midcap 30 Fund (MOST Focused Midcap 30) and Motilal Oswal MOST Focused Multicap 35 Fund (MOST Focused Multicap 35), (referred to as Transferee Scheme) with allocations based on MOVI levels. The transfers will be enabled in the reverse as well.

The Salient features of the Plan are as under:

1. Motilal Oswal Value Index (MOVI) helps gauge equity market. The Index is calculated taking into account Price to Earnings, Price to Book and Dividend Yield of the Nifty 50 Index.

A low MOVI level indicates that the market valuation appears to be cheap and one may allocate a higher percentage of their investments to Equity as an asset class. A high MOVI level indicates

that the market valuation appears to be expensive and that one may reduce their equity allocation.

2. India Index Services & Products Ltd. (IISL) is the calculating agent of NIFTY MOVI. IISL shall calculate, compile, maintain and provide NIFTY MOVI values to Motilal Oswal Asset Management Company Ltd. NIFTY MOVI values will be published on the MOAMC website on a daily basis.
3. Transfer: This transfer is made from the Transferor Scheme to the Transferee Scheme, on the date of allocation based on NIFTY MOVI levels.

Reverse Transfer: This transfer is made from the Transferee Scheme to the Transferor Scheme, when appreciation in the market value of the Transferee Scheme results in a breach of the prescribed allocation level as determined by NIFTY MOVI.

4. This Plan presently offers two enrolment options:
 - a. One Time Investment
 - b. Systematic Transfer Plan (STP) with a minimum of 6 installments.
5. Minimum amount under this Plan is as follows:

Options	Minimum Amount of Transfer (Rs.)
One Time Investment	Rs. 5000/- and in multiples of Re. 1/- thereafter
STP	Rs. 1000/- and in multiples of Re. 1/- thereafter

6. The date of allocation will be the 15th of every month. In case the date of allocation falls on a Non-Business Day or falls during a book closure period, the immediate following Business Day will be considered as the date of allocation.

Note: Under „One Time Investment’ enrolment option, in addition to the 15th of every month, allocation will occur on the business day succeeding the date of enrolment into the MOVI Pack Plan.

Under „STP’ enrolment option, if the Unit holder has an existing Systematic Investment Plan (SIP) in the Transferor scheme where the date of SIP falls on a date later than or on 15th of every month, then allocation for that amount will occur on 15th of the subsequent month.

7. On the date of allocation, the prescribed percentage of the amount will be transferred in the Transferee Scheme at the closing NAV of the same day i.e. date of allocation.
8. The AMC will require upto 7 calendar days from the date of submission of valid enrolment forms to register the Investor under this Plan. Therefore, in the intervening period i.e. date of submission of enrolment form and date of registration, if the date of allocation is crossed, then the same will be considered at the next date of allocation.
9. The amount transferred under this Plan from the Transferor Scheme to Transferee Scheme shall be effective by redeeming units of Transferor Scheme at applicable NAV, (subject to the applicable exit load, if any) and subscribing to the units of the Transferee Scheme at applicable NAV on the date of allocation.
10. Unit holders can discontinue the Plan at any time by providing a written request which shall be

made effective within 7 calendar days of the date of receipt of the said request.

11. This Plan will be automatically terminated if all units are liquidated or withdrawn or pledged or upon receipt of intimation of death of the unit holder.
12. Unit holders should note that investor details and mode of holding (single, joint, anyone or survivor) in the Transferee Scheme will be as per the existing folio number of the Transferor Scheme. Units will be allotted under the same folio number.
13. Any change in methodology of MOVI would only be carried out by obtaining prior consent of the Board of Trustees of Motilal Oswal Trustee Company Limited, the Trustees to Motilal Oswal Mutual Fund.
14. Given the two way movement of investments between funds, liquidity at times may be restricted by trading volumes, settlement periods, and inordinately large number of redemption requests or restructuring of the Scheme. This may impact the performance of the underlying scheme.
15. Investors may approach/consult their tax consultants in regard to the treatment of the transfer of units from the tax point of view.
16. Investors are required to refer to the terms and conditions mentioned in the enrolment form.
17. The Trustee/AMC reserves the right to change/modify the terms and conditions of the MOVI Pack Plan or withdraw this facility.

This facility will also be available for transfer into any other equity scheme of Motilal Oswal Mutual Fund that may be launched in future.

V. NAV Appreciation facility

(Applicable to the Schemes, MOSt Focused Multicap 35, MOSt Focused Midcap 30 and MOSt Ultra Short Term Bond Fund)

Under this option, Unitholder are being provided with an option to switch an amount equal to the periodic appreciation on the investment on weekly, fortnightly and monthly frequencies. Under this option, the Unitholder transfers only proportionate amount equal to the appreciation in the investment over the last month. The Unitholder has to mention a “Start Date”. The Dates available under this facility are 1st, 7th, 14th, 21st or 28th of the month. The first Switch will happen after one month from the start date. In case the Unitholder purchases additional Units, the amount to be transferred would be equal to the appreciation generated on its investments, provided the appreciation is at least Rs. 1,000/-. In the absence of any appreciation or appreciation less than Rs. 1,000/- as mentioned above, the Switch under this option will not be made for that month. The Units in the Scheme/Option from which the Switch-out is sought will be redeemed at the Applicable NAV of the Scheme/Option on the respective dates on which such Switches are sought and the amount in the scheme/plan/option to which the Switch-in is sought will be allotted at the Applicable NAV of such scheme/plan/option on the respective dates. In case the day on which the transfer is sought is a Non-Business Day for the Scheme(s), the same will be processed on the immediately following Business Day.

The Trustees reserve the right to change/modify the terms and conditions or withdraw above facility.

VI. Dividend Transfer Plan

Dividend Transfer Plan (DTP) is a facility wherein the Unitholders under the Dividend Option, can choose to automatically invest the amount of dividend (as reduced by the amount of applicable statutory levy) receivable by them into all equity scheme(s) of the Mutual Fund provided the minimum accumulation of Rs. 1000/- and above and subject to restriction, if any, of the respective equity schemes,. If the amount of dividend in the source scheme is less than Rs. 1000/-, the dividend will be reinvested in the same scheme. Unitholders enrolment under the DTP facility will automatically override any previous instructions for „Dividend Payout’ or „Dividend Reinvestment’ facility in the source scheme. The source scheme shall be Motilal Oswal MOST Ultra Short Term Bond Fund.

Under this provision, the dividend amount to be invested shall be automatically invested by subscribing to the units of the chosen equity scheme of the Fund on the immediate next Business Day after the record date at the applicable NAV of such equity scheme.

Notwithstanding above provisions relating to Dividend, there is no assurance or guarantee regarding declaration of dividend. The dividends will be declared solely at Trustee's discretion and subject to availability of distributable surplus

The Trustee/AMC reserves the right to change/modify the terms and conditions of the DTP.

DIFFERENTIATION BETWEEN EXISTING SCHEMES OF MOTILAL OSWAL MUTUAL FUND

Name of the Scheme	Investment Objective	Asset Allocation	Product Differentiation	Asset Under Management (Rs. In Crores) (As on September 30, 2016)	Number of Folio's (As on September 30, 2016)
Motilal Oswal MOST Shares M50 ETF (MOST Shares M50)	The Scheme seeks investment return that corresponds (before fees and expenses) generally to the performance of the Nifty 50 Index (Underlying Index), subject to tracking error. However, there can be no assurance or guarantee that the investment objective of the Scheme would be achieved.	The Scheme would invest at least 95% in the securities constituting Nifty 50 Index and the balance in debt and money market instruments and cash at call.	MOST Shares M50 is an open ended exchange traded fund which invests in securities constituting Nifty 50 Index.	21.19	3,882
Motilal Oswal MOST	The Scheme seeks investment return that corresponds (before	The Scheme would invest at least 95% in the	MOST Shares Midcap100 is an open ended Index	26.19	3,540

Shares Midcap 100 ETF (MOST Shares Midcap100)	fees and expenses) to the performance of Nifty Free Float Midcap 100 Index (Underlying Index), subject to tracking error. However, there can be no assurance or guarantee that the investment objective of the Scheme would be achieved.	securities constituting Nifty Free Float Midcap 100 Index and the balance in debt and money market instruments and cash at call.	exchange traded fund which invests in securities constituting Nifty Free Float Midcap 100 Index in the same proportion as in the Index.		
Motilal Oswal MOST Shares NASDAQ- 100 ETF (MOST Shares NASDAQ 100)	The Scheme seeks investment return that corresponds (before fees and expenses) generally to the performance of the NASDAQ-100 Index, subject to tracking error. However, there can be no assurance or guarantee that the investment objective of the Scheme would be achieved.	The Scheme would invest at least 95% in the securities constituting NASDAQ-100 Index and the balance in Overseas Debt and Money market instruments and cash at call, mutual fund schemes or exchange traded funds based on NASDAQ-100 Index.	The Scheme will invest in the securities which are constituents of NASDAQ-100 Index in the same proportion as in the Index.	63.08	2,999
Motilal Oswal MOST Focused 25 Fund (MOST Focused 25)	The investment objective of the Scheme is to achieve long term capital appreciation by investing in upto 25 companies with long term sustainable competitive advantage and growth potential. However, there can be no assurance or guarantee that the investment objective of the Scheme would be achieved.	The Scheme would invest at least 90% in Equity and equity related instruments and balance in Debt and Money Market Instruments, G-Secs, Bonds	The Scheme is an open ended equity scheme with an investment objective to achieve long term capital appreciation by investing in upto 25 companies with long term sustainable competitive advantage and growth potential. The asset allocation of the Scheme is	364.49	24,291

			investing upto 65% in equity and equity related instruments from Top 100 listed companies by market capitalization and upto 25% in equity and equity related instruments of the next 50 companies by market capitalization and the balance upto 10% in debt, money market instruments, G-secs, Bonds, cash and cash equivalents, etc.		
Motilal Oswal MOST Ultra Short Term Bond Fund (MOST Ultra Short Term Bond Fund)	The investment objective of the Scheme is to generate optimal returns consistent with moderate levels of risk and liquidity by investing in debt securities and money market securities. However, there can be no assurance or guarantee that the investment objective of the Scheme would be achieved.	The Scheme would invests in Debt Instruments including Government Securities, Corporate Debt, Other debt instruments, Term Deposits and Money Market Instruments with average maturity less than equal to 12 months	The Scheme is an open ended debt Scheme which will invests in debt instruments and money market instruments with average maturity less than or equal to 12 months.	237.78	5,507
Motilal Oswal MOST Focused Midcap 30 Fund (MOST Focused Midcap 30)	The investment objective of the Scheme is to achieve long term capital appreciation by investing in a maximum of 30 quality mid-cap companies having long-term competitive advantages and potential for	The Scheme would invest at least 65-100% in Equity and equity related instruments* selected between Top 101 st and 200 th listed companies by market	The Scheme is an open ended equity scheme with investment objective to achieve long term capital appreciation by investing in 65-100% in Equity and equity related	1,287.35	43,554

	<p>growth.</p> <p>However, there can be no assurance or guarantee that the investment objective of the Scheme would be achieved.</p>	<p>capitalization and upto 25% in Equity and equity related instruments* beyond the Top 200th listed company and with market capitalization not lower than the smallest company in the Nifty Free Float Midcap 100 Index and balance 10% in Debt, Money Market Instruments, G-Sec, Bonds, Cash and cash equivalents, etc.</p> <p>*subject to overall limit of 30 companies</p>	<p>instruments* selected between Top 101st and 200th listed companies by market capitalization and upto 25% in Equity and equity related instruments* beyond the Top 200th listed company and with market capitalization not lower than the smallest company in the Nifty Free Float Midcap 100 Index and balance 10% in Debt, Money Market Instruments, G-Sec, Bonds, Cash and cash equivalents, etc.</p> <p>*subject to overall limit of 30 companies</p>		
<p>Motilal Oswal MOST Focused Multicap 35 Fund (MOST Focused Multicap 35)</p>	<p>The investment objective of the Scheme is to achieve long term capital appreciation by primarily investing in a maximum of 35 equity & equity related instruments across sectors and market-capitalization levels.</p>	<p>The scheme would invest 65% to 100% in Equity and equity related instruments and balance up to 35% in debt instruments, Money Market Instruments, G-Secs, Cash and cash equivalents.</p> <p>*subject to overall limit of 35 securities</p>	<p>The scheme is an open ended diversified equity scheme which with an objective to achieve long term capital appreciation by investing in securities across sectors and market capitalization levels.</p>	<p>4,495.70</p>	<p>117,244</p>

<p>Motilal Oswal MOST Focused Long Term Fund (MOST Focused Long Term)</p>	<p>The investment objective of the scheme is to generate long term capital appreciation from a diversified portfolio of predominantly equity and equity related instruments.</p> <p>However, there can be no assurance or guarantee that the investment objective of the Scheme would be achieved.</p>	<p>The scheme would invest 80% to 100% in Equity and equity related instruments and balance up to 20% in debt instruments, Money Market Instruments, G-Secs, Cash and cash at call, etc.</p>	<p>The scheme is an open ended equity linked saving scheme with a 3 year lock in with an objective to generate long term capital appreciation.</p>	<p>194.31</p>	<p>25,401</p>
<p>Motilal Oswal MOST Focused Dynamic Equity Fund (MOST Focused Dynamic Equity)</p>	<p>The investment objective is to generate long term capital appreciation by investing in equity and equity related instruments including equity derivatives as well as debt instruments.</p> <p>However, there can be no assurance or guarantee that the investment objective of the Scheme would be achieved.</p>	<p>The scheme would invest 65% to 100% in Equity and equity related instruments including equity derivatives and balance up to 35% in Debt Instruments, Money Market Instruments, G-Secs, Cash and cash at call, etc.</p>	<p>The scheme shall change its allocation between equity, derivatives and debt, based on MOVI.</p>	<p>331.27</p>	<p>26,310</p>

This KIM is dated October 15, 2016.

MOTILAL OSWAL MUTUAL FUND**a) Designated Collection Center**

Hyderabad	201, Lumbini Amrutha Chambers, Near Nagarjuna Circle, Road 3, Banjara Hills, Hyderabad - 500 082
Mumbai	10 th Floor, Motilal Oswal Tower, Rahimtullah Sayani Road, Opp. Parel ST Depot, Prabhadevi, Mumbai – 400025
Mumbai - Fort	2nd Floor, Queens Mansion, 44, A. K. Naik Marg, Fort, Mumbai - 400001
Pune	Millennium Towers, 5 Floor, Sr No 885/1/A, Bhandarkar Road, Above Cosmos Bank, Shivaji Nagar, Pune 411004
Ahmedabad	403, Third Eye Building, Panchwati Cross Roads, Opp. Centre Point, C. G. Road, Ahmedabad-380006
Delhi	801-815, 8th Floor, Tolstoy House, Tolstoy Marg, Connaught Place, New Delhi - 110001
Chennai	NO: 121/46, Frist Floor, Dr. Radhakrishnan Salai, Above "Arvind Store", Opposite to CITI Center, Mylapore, Chennai – 600004
Bangalore	Unit No.S-806, 8th floor, South Block, Manipal Centre, Dickenson Road, Bangalore – 560 042
Kolkata	3rd Floor, Constantia Building, 11, Dr. U. N. Bramachari Street, Kolkata - 700 017

b) Investor Service Center

Surat	Office No.2006, Mezzanine Floor, 21st Century Business Centre, Ring Road, Surat-395 002
Jaipur	301 & 304, 3rd Floor, Luhadia tower, Ashok Marg, C Scheme, Jaipur - 302001
Lucknow	710, 7th Floor, Ratan Square, 20-A, Vidhan Sabha Marg, Lucknow – 226001, Uttar Pradesh
Chandigarh	SCO 86 First Floor, Sector - 38C, Chandigarh - 160036(U.T)
Cochin	41/418E, 4th Floor, Chicago Plaza, Rajaji Road, Cochin, Kerala - 682035

KARVY COMPUTERSHARE PRIVATE LIMITED (Official Collection Centres)

Agartala	Bhagalpur	Durgapur	Jalpaiguri	Mathura	Pudukottai	Solapur
Agra	Bharuch	Eluru	Jammu	Meerut	Pune	Sonepat
Ahmedabad	Bhatinda	Erode	Jamnagar	Mehsana	Raipur	Sri Ganganagar
Ajmer	Bhavnagar	Faridabad	Jamshedpur	Mirzapur	Rajahmundry	Srikakulam
Akola	Bhilai	Ferozpur	Jaunpur	Moga	Rajapalayam	Sultanpur
Aligarh	Bhilwara	Gandhidham	Jhansi	Moradabad	Rajkot	Surat
Allahabad	Bhopal	Gandhinagar	Jodhpur	Morena	Ranchi	Thanjavur
Alleppy	Bhubaneswar	Gaya	Junagadh	Mumbai	Ratlam	Thodupuzha
Alwar	Bikaner	Ghaziabad	Kannur	Muzaffarpur	Renukoot	Tirunelveli
Amaravathi	Bilaspur	Ghaziipur	Kanpur	Mysore	Rewa	Tirupathi
Ambala	Bokaro	Gonda	Karaiikudi	Nadiad	Rohtak	Tirupur
Amritsar	Burdwan	Gorakhpur	Karimnagar	Nagercoil	Roorkee	Tiruvalla
Anand	Calicut	Gulbarga	Karnal	Nagpur	Rourkela	Trichur
Ananthapur	Chandigarh	Guntur	Karur	Namakkal	Sagar	Trichy
Ankleshwar	Chandrapur	Gurgaon	Kharagpur	Nanded	Saharanpur	Trivandrum
Asansol	Chennai	Guwahati	Kolhapur	Nasik	Salem	Tuticorin
Aurangabad	Chinsura	Gwalior	Kolkata	Navsari	Sambalpur	Udaipur
Azamgarh	Cochin	Haldwani	Kollam	Nellore	Satna	Ujjain
Balasure	Coimbatore	Haridwar	Korba	New Delhi	Shaktinagar	Valsad
Bangalore	Cuttack	Hassan	Kota	Nizamabad	Shillong	Vapi
Bankura	Darbhanga	Hissar	Kottayam	Noida	Shimla	Varanasi
Bareilly	Davangere	Hoshiarpur	Kurnool	Palghat	Shimoga	Vellore
Barhampore (Wb)	Dehradun	Hubli	Lucknow	Panipat	Shivpuri	Vijayanagaram
Baroda	Deoria	Hyderabad	Ludhiana	Panjim	Sikar	Vijayawada
Begusarai	Dewas	Indore	Madurai	Pathankot	Silchar	Visakhapatnam
Belgaum	Dhanbad	Jabalpur	Malappuram	Patiala	Siliguri	Warangal
Bellary	Dharwad	Jaipur	Malda	Patna	Sitapur	Yamuna Nagar
Berhampur (Or)	Dhule	Jalandhar	Mangalore	Pollachi	Sivakasi	-
Betul	Dindigul	Jalgaon	Margoa	Pondicherry	Solan	-

Visit the link <https://www.karvymfs.com/karvy/GeneralPages/locateUs.aspx?fm=cu> to view the complete details of designated collection centres / Investor Service centers of Karvy Computershare Private Limited

CHECKLIST

Please ensure that:

- Your Application Form is complete in all respects. Name, Address and Contact Details are mentioned in full & signed by all applicants.
- Bank Account Details are entered completely and correctly.
- KYC Compliance for all applications is mentioned irrespective of the investment amount and necessary documents are enclosed.
- DP ID is filled correctly in the form.
- Cheques should be crossed "A/c Payee only" and drawn in favour of
 - **MOST Focused 25**
 - **MOST Focused MidCap 30**
 - **MOST Focused MultiCap 35**
 - **MOST Focused Ultra Short Term Bond Fund**
 - **MOST Focused Long Term**
- Application Number and applicants name is mentioned on the reverse of the cheque/DD.
- Documents as listed below are submitted along with the Application Form (as applicable to your specific case).

Documents	Companies	Trusts	Societies	Partnership Firms	NRIs/PIOs	FIs*	Investments through Constituted Attorney
KYC	✓	✓	✓	✓	✓	✓	✓
Resolution/Authorisation to invest	✓	✓	✓	✓		✓	
List of Authorised Signatories with Specimen Signature(s)	✓	✓	✓	✓		✓	✓
Memorandum & Articles of Association	✓						
Trust Deed		✓					
Bye-laws			✓				
Partnership Deed				✓			
Notarised Power of Attorney							✓
Account Debit/Foreign inward Remittance Certificate from remitting Bank					✓		

*For FIs, copy of the SEBI registration certificate should be provided.

All documents above should be originals / true copies certified by the Director/Trustee/Company Secretary/Authorised Signatory/Notary Public. If PAN / KYC proof of minor is not available, PAN / KYC proof of guardian should be provided.

Distributor ARN / RIA#	Distributor Name	Sub-Distributor ARN/RIA#	Internal Sub-Broker/Employee Code	EUIN
ARN/RIA		ARN		

#By mentioning RIA code, I/We authorize you to share with the SEBI Registered Investment Advisor the details of my/our transactions in the scheme(s) of Motilal Oswal Mutual Fund.

Investors applying under Direct Plan must mention "Direct" in ARN Column

Upfront commission shall be paid directly by the investor to the AMFI registered distributor based on the investor's assessment of various factors including the service rendered by the distributor.

"I/We hereby confirm that the EUIN box has been intentionally left blank by me/us as this transaction is executed without any interaction or advice by the employee/relationship manager/sales person of the above distributor/sub broker or notwithstanding the advice of in-appropriateness, if any, provided by the employee/relationship manager/sales person of the distributor/sub broker."

First / Sole Applicant /
Guardian

Second Applicant

Third Applicant

Power of Attorney
Holder

TRANSACTION CHARGES FOR APPLICATIONS THROUGH DISTRIBUTORS ONLY (Refer Instruction 11) In case the subscription amount is ₹10,000 or more and your Distributor has opted to receive Transaction Charges, the same are deductible as applicable from the purchase/ subscription amount and payable to the Distributor. Units will be issued against the balance amount invested.

Transaction Charges for per subscription ₹ 10,000 and above

Existing Investor - ₹100
 New Investor - ₹150

1 EXISTING INVESTOR'S DETAILS (Please fill your Folio No., Name, Section 2,7,10 &12)

Folio No. Name F I R S T M I D D L E L A S T

2 FIRST APPLICANT'S DETAILS (Non-individual investor please fill in FATCA, CRS & UBO Declaration in Section 10B, 11 & 12)

Mr. Ms. M/s

Name F I R S T M I D D L E L A S T

Father's Name F I R S T M I D D L E L A S T

PAN /PEKRN** CIN

KIN (KYC identification number) Aadhar No.

Date of Birth / Incorporation D D M M Y Y Y Y Place of Birth / Incorporation Country of Birth / Incorporation Nationality Indian US Others (Please Specify)

City of Incorporation Aadhar No. of Guardian

For Investments "On behalf of Minor" Birth Certificate School Certificate Passport Others Specify Guardian named below is Father Mother Court Appointed (Refer Instruction 1d)

KIN of Guardian/ PoA (KYC identification number)

Name of the Guardian (In case of minor) / Contact person for non individuals / PoA holder name Guardian / PoA PAN

F I R S T M I D D L E L A S T

Tax Residence Address (for KYC Address) Residential Registered office Business Residential or Business

Correspondence Address

City State Pin Code

Overseas address Mandatory incase of NRI's

Email ID Mobile Tel.

Email ID & Mobile No. are essential to enable us to communicate better with you

** Please mention PAN/PEKRN(PAN Exempted KYC Reference Number) as it is mandatory

3 KYC Details (Mandatory)

Status Partnership Firm HUF Private Limited Company Public Limited Company Listed Company Society AOP/BOI Trust H Liquidator
 Artificial Juridical Person Resident Individual Proprietor Minor FII/ FPI NRI PIO Limited Liability Partnership Trust
 Body Corporate NGO FI Govt. Body Bank Defence Establishments NPO Others Specify

Occupation Pvt. Sector Service Public Sector Gov. Service Housewife Defence Professional Retired Business Agriculture Student Forex Dealer Others Specify

Gross Annual Income OR Net-worth* in ₹ <1L 1-5L 5-10L 10-25L 25L-1CR >1CR

INDIVIDUALS
network as on D D M M Y Y Y Y
Any other information

<1L 1-5L 5-10L 10-25L 25L-1CR >1CR

NON-INDIVIDUALS
network as on D D M M Y Y Y Y
(Networth is mandatory for Non-individuals)
Any other information

Is the entity involved in any of the following:

1 Foreign Exchange/ Money Changer Yes No
2 Gaming / Gambling / Lottery (casinos, Betting syndicates) Yes No
3 Money Lending/ Pawning Yes No

Politically Exposed Person (PEP) Status (Also applicable for authorised signatories/Promoters/ Karta/ Trustee/ Whole time Directors) I am PEP I am Related to PEP Not Applicable

4 JOINT APPLICANT'S DETAILS

SECOND APPLICANT'S DETAILS

Mr. Ms. M/s

Mode of Holding Joint Anyone or Survivor (Default)

Name F I R S T M I D D L E L A S T

ACKNOWLEDGMENT SLIP Received subject to realisation, verification and conditions, an application for purchase of Units as mentioned in the application form. **Application No.**

From

Cheque no.	Date	Amount	Scheme

Stamp & Signature

Father's Name F I R S T M I D D L E L A S T

PAN /PEKRN** Email ID Mobile

Email ID & Mobile No. are essential to enable us to communicate better with you

KIN (KYC identification number) Aadhar No.

Date of Birth D D M M Y Y Y Y Place of Birth Country of Birth Nationality Indian US Others (Please Specify)

Occupation Pvt. Sector Service Public Sector Gov. Service Housewife Defence Professional Retired Business Agriculture Student Forex Dealer Others Specify

Gross Annual Income OR Net-worth* in ₹ Not older than one year INDIVIDUALS <1L 1-5L 5-10L 10-25L 25L-1CR >1CR networth as on D D M M Y Y Any other information

Politically Exposed Person (PEP) Status I am PEP I am Related to PEP Not Applicable

THIRD APPLICANT'S DETAILS Mr. Ms. M/s

Name F I R S T M I D D L E L A S T

Father's Name F I R S T M I D D L E L A S T

PAN /PEKRN** Email ID Mobile

Email ID & Mobile No. are essential to enable us to communicate better with you

KIN (KYC identification number) Aadhar No.

Date of Birth D D M M Y Y Y Y Place of Birth Country of Birth Nationality Indian US Others (Please Specify)

Occupation Pvt. Sector Service Public Sector Gov. Service Housewife Defence Professional Retired Business Agriculture Student Forex Dealer Others Specify

Gross Annual Income OR Net-worth* in ₹ Not older than one year INDIVIDUALS <1L 1-5L 5-10L 10-25L 25L-1CR >1CR networth as on D D M M Y Y Any other information

Politically Exposed Person (PEP) Status I am PEP I am Related to PEP Not Applicable

**Please mention PAN/PEKRN (PAN Exempted KYC Reference Number) as it is mandatory

5 DEMAT ACCOUNT DETAILS (Mandatory, only if you require units in the demat form. Please fill in all details, else the application is liable to be rejected. Nomination provided in demat account shall be considered.)

NSDL CDSL Depository Participant (DP) Name

DP ID Beneficiary A/c No.

6 EMAIL COMMUNICATION

All communications will be sent by default to the registered E-mail id / Mobile No. In case you wish to receive physical communication please

7 INVESTMENT & PAYMENT DETAILS

Payment Type (Please ✓) Non - Third party payment Third party payment (Please fill the Third Party Payment Declaration Form)

Scheme Motilal Oswal MOST Focused Dynamic Equity Fund Motilal Oswal MOST Focused Multicap 35 Fund Motilal Oswal MOST Focused 25 Fund Motilal Oswal MOST Focused Long Term Fund Motilal Oswal MOST Focused Midcap 30 Fund Motilal Oswal MOST Ultra Short Term Bond Fund

Plan and Option Regular Option Growth (Default Option) Div - Payout Div - Reinvest (Default Option) (N/A for MOST Focused Long Term) Applicable for Motilal Oswal MOST Focused Dynamic Equity Fund Quarterly Annually (Default Option) Applicable for Motilal Oswal MOST Ultra Short Term Bond Fund Daily Weekly Fortnightly Monthly Quarterly (Not Applicable for Dividend Payout Option)

LUMPSUM INVESTMENT OR ZERO BALANCE OR SYSTEMATIC INVESTMENT PLAN / MICRO SIP-ECS (please fill OTM Debit Mandate form NACH/ ECS/ Direct Debit Form-2)

LUMPSUM INVESTMENT Payment Mode: Cheque DD RTGS NEFT Funds Transfer Amount (₹) (i) DD charges (₹) (ii) Total Amt. (₹) (i)+(ii) Instrument No. Date D D M M Y Y Bank Name Bank A/c No. Branch Name & City Account Type: Current Savings NRO NRE FCNR

SYSTEMATIC INVESTMENT PLAN 1st SIP Instalment Amount (₹) Cheque /DD No. Date D D M M Y Y Drawn on Bank Bank & Branch Subsequent SIP Instalment Amount (₹) In words Weekly (1st, 7th, 14th, 21st, 28th) Fortnightly 1st-14th 7th-21st 14th-28th Monthly 1st 7th(Default) 14th 21st 28th Quarterly 1st 7th(Default) 14th 21st 28th Annual SIP Any Day/ Date SIP Weekly - Any Day of Transfer (Monday to Friday) Monthly SIP - Any date of the month D D except (29th, 30th and 31st) Quarterly SIP - Any date of the month for each quarter (i.e. January, April, July, October) D D except (29th, 30th and 31st) SIP Period From M M Y Y Y Y To End date M M Y Y Or Perpetual



Motilal Oswal Asset Management Company Limited 10th Floor, Motilal Oswal Tower, Rahimtullah Sayani Road, Opposite Parel ST Depot, Prabhadevi, Mumbai - 400025 Email: mfservice@motilaloswal.com. Toll Free No.: 1800-200-6626 website: www.motilaloswalmf.com

8 BANK DETAILS (Mandatory) Redemption / Dividend / Refund payouts will be credited into this bank account in case it is in the current list of banks with whom Motilal Oswal Mutual Fund has Direct Credit facility.

Bank Name

Bank A/c No. Type Current Savings NRO NRE FCNR Others Specify

Branch Name City Pin

IFSC Code (11 digit)* MICR Code (9 digit)* *Mentioned on your cheque leaf

I / We understand that the instructions to the bank for Direct Credit / NEFT / ECS will be given by the Mutual Fund, and such instructions will be adequate discharge of the Mutual Fund towards redemption / dividend / refund proceeds. In case the bank does not credit my / our bank account with / without assigning any reason thereof, or if the transaction is delayed or not effected at all or credited into the wrong account for reasons of incomplete or incorrect information. I / We would not hold Motilal Oswal Mutual Fund responsible. Further the Mutual Fund reserves the right to issue a demand draft / payable at par cheque in case it is not possible to make payment by Direct Cash/NEFT/ECS. If however the unit holders wish to receive a cheque (instead of a direct credit into their bank account) Please tick the box alongside

9 NOMINATION DETAILS (Refer Instruction 9)

Name (Date of Birth if nominee is minor)	Address	Guardian Name (in case Nominee is a Minor)	Signature (Guardian in case Nominee is a Minor)	Allocation %
<input type="text"/>	<input type="text"/>	<input type="text"/>	<input type="text"/>	<input type="text"/>
<input type="text"/>	<input type="text"/>	<input type="text"/>	<input type="text"/>	<input type="text"/>
<input type="text"/>	<input type="text"/>	<input type="text"/>	<input type="text"/>	<input type="text"/>
Unit Holder's Signature <small>If you do not wish to nominate sign here.</small>	First / Sole Applicant / Guardian	Second Applicant	Third Applicant	Power of Attorney Holder
<input type="text"/>	<input type="text"/>	<input type="text"/>	<input type="text"/>	100%

10 FATCA- CRS Declaration and Supplementary Information

10A Declaration for Individual

Are you a tax resident (i.e., are you assessed for Tax) in any other country outside India? Yes No

If 'No' please proceed for the signature of declaration

If 'YES', please fill for ALL countries (other than India) in which you are a Resident for tax purposes i.e., where you are a Citizen / Resident / Green Card Holder / Tax Resident in the respective countries[#]

	Country of Tax Residency	Tax Identification Number or Functional Equivalent	Identification Type (TIN or other, please specify)	If TIN is not available, please tick (✓) the reason A, B, & C (as defined below)
First Applicant	<input type="text"/>	<input type="text"/>	<input type="text"/>	Reason <input type="checkbox"/> A <input type="checkbox"/> B <input type="checkbox"/> C
Second Applicant	<input type="text"/>	<input type="text"/>	<input type="text"/>	Reason <input type="checkbox"/> A <input type="checkbox"/> B <input type="checkbox"/> C
Third Applicant	<input type="text"/>	<input type="text"/>	<input type="text"/>	Reason <input type="checkbox"/> A <input type="checkbox"/> B <input type="checkbox"/> C

Reason A: The country where the Account Holder is liable to pay tax does not issue Tax Identification Numbers to its residents. **Reason B:** No TIN required. (Select this reason Only if the authorities of the respective country of tax residence do not require the TIN to be collected). **Reason C:** Others; please state the reason thereof.

[#]Please attach additional sheets if necessary

10B Declaration for Non-Individual / Legal Entity

1. Is "Entity" a tax resident of any country other than India Yes No (If yes, please provide country/ies in which the entity is a resident for tax purposes and the associated Tax ID number below.)

Country	Tax Identification Number [%]	Identification Type (TIN or Other, please specify)
<input type="text"/>	<input type="text"/>	<input type="text"/>
<input type="text"/>	<input type="text"/>	<input type="text"/>
<input type="text"/>	<input type="text"/>	<input type="text"/>

[%] In case Tax Identification Number is not available, kindly provide its functional equivalent.

In case TIN or its functional equivalent is not available, please provide Company Identification number or Global Entity Identification Number or GIIN, etc.

In case the Entity's Country of Incorporation / Tax residence is U.S. but Entity is not a Specified U.S. Person, mention Entity's exemption code here

Please refer to para 3(vii) Exemption code for U.S. persons of FATCA instructions & Definitions Non-Individual.

Part A (to be filled by Financial Institutions or Direct Reporting NFEs)

1. We are a, Financial institution or Direct reporting NFE (please tick as appropriate)

GIIN not available (please tick as applicable) If the entity is a financial institution,

Global Intermediary Identification Number (GIIN)

Note: If you do not have a GIIN but you are sponsored by another entity, please provide your sponsor's GIIN above and indicate your sponsor's name below

Name of sponsoring entity

Applied for Not required to apply for - please specify 2 digits sub-category Not obtained - Non-participating FI

Part B (please fill any one as appropriate "to be filled by NFEs other than Direct Reporting NFEs")

1. Is the Entity a publicly traded company (that is, a company whose shares are regularly traded on an established securities market) No Yes (If yes, please specify any one stock exchange on which the stock is regularly traded) Name of stock exchange

2. Is the Entity a related entity of a publicly traded company (a company whose shares are regularly traded on an established securities market) No Yes (If yes, please specify name of the listed company and one stock exchange on which the stock is regularly traded) Name of listed company Nature of relation Subsidiary of the Listed Company or Controlled by a Listed Company Name of stock exchange

3. Is the Entity an active Non Financial Entity (NFE) No Yes Nature of Business Please specify the sub-category of Active NFE (Mention code -refer 2 FATCA instruction and definition for non-individual)

4. Is the Entity a passive NFE No Yes (If yes, please fill UBO declaration in the next section.) Nature of Business

For details please refer FATCA Instructions and Definitions (for Non-Individuals)

If passive NFE, please provide below additional details for each controlling person. (Please attach additional sheets if necessary.)

Name/ PAN/ Any other Identification Number (PAN, Aadhar, Passport Election ID, Govt. ID, Driving Licence NREGA Job Card, Others) City of Birth - Country of Birth	Occupation Type: Service, Business, Others Nationality: Father's Name: Mandatory if PAN is not available	DOB: Date of Birth Gender: Male, Female, Other
1. Name: <input type="text"/> PAN: <input type="text"/> City of Birth: <input type="text"/> Country of Birth: <input type="text"/>	Occupation Type: <input type="text"/> Nationality: <input type="text"/> Father's Name: <input type="text"/>	Date Of Birth: <input type="text"/> <input type="text"/> <input type="text"/> <input type="text"/> <input type="text"/> <input type="text"/> <input type="text"/> <input type="text"/> <input type="text"/> Gender <input type="checkbox"/> Male <input type="checkbox"/> Female <input type="checkbox"/> Other
2. Name: <input type="text"/> PAN: <input type="text"/> City of Birth: <input type="text"/> Country of Birth: <input type="text"/>	Occupation Type: <input type="text"/> Nationality: <input type="text"/> Father's Name: <input type="text"/>	Date Of Birth: <input type="text"/> <input type="text"/> <input type="text"/> <input type="text"/> <input type="text"/> <input type="text"/> <input type="text"/> <input type="text"/> Gender <input type="checkbox"/> Male <input type="checkbox"/> Female <input type="checkbox"/> Other
3. Name: <input type="text"/> PAN: <input type="text"/> City of Birth: <input type="text"/> Country of Birth: <input type="text"/>	Occupation Type: <input type="text"/> Nationality: <input type="text"/> Father's Name: <input type="text"/>	Date Of Birth: <input type="text"/> <input type="text"/> <input type="text"/> <input type="text"/> <input type="text"/> <input type="text"/> <input type="text"/> <input type="text"/> Gender <input type="checkbox"/> Male <input type="checkbox"/> Female <input type="checkbox"/> Other

Additional details to be filled by controlling persons with tax residency / permanent residency / citizenship / Green Card in any country other than India.

* To include US, where controlling person is a US citizen or green card holder

% In case Tax Identification Number is not available, kindly provide functional equivalent

11 DETAILS OF ULTIMATE BENEFICIAL OWNERS / ULTIMATE BENEFICIAL OWNERSHIP (UBO) DECLARATION [Mandatory]

(If the given space below is not adequate, please attach multiple declaration forms)

*This declaration is not needed for Companies that are listed on any recognized stock exchange or is a Subsidiary of such Listed Company or is Controlled by such Listed Company. Please list below the details of controlling person(s), confirming ALL countries of tax residency / permanent residency / citizenship and ALL Tax Identification Numbers for EACH controlling person(s). Owner-documented FFI's should provide FFI Owner Reporting Statement and Auditor's Letter with required details as mentioned in Form W8 BEN E.

Name of UBO	Address (Include State, Country, PIN/ZIP Code & Contact Details)	Address Type	PAN/Tax Payer Identification No./ Equivalent ID No. ⁶	Country of tax Residency*	Controlling Person Type ¹ (Mandatory)	% of beneficial interest
		<input type="checkbox"/> Residential <input type="checkbox"/> Business <input type="checkbox"/> Registered Office	No.: Type:			
		<input type="checkbox"/> Residential <input type="checkbox"/> Business <input type="checkbox"/> Registered Office	No.: Type:			
		<input type="checkbox"/> Residential <input type="checkbox"/> Business <input type="checkbox"/> Registered Office	No.: Type:			

Attached documents should be self certified by the UBO and certified by the applicant or Authorised Signatory.

I/We acknowledge and confirm that the information provided above is/are true and correct to the best of my/our knowledge and belief. In the event any of the above information is/are found to be false/incorrect and/or the declaration is not provided, then the AMC/Trustee/Mutual Fund shall reserve the right to reject the application and/or reverse the allotment of units and the AMC/Trustee/Mutual Fund shall not be liable for the same. I/We hereby authorize sharing of the information furnished in this form with all SEBI Registered Intermediaries and they can rely on the same. In case the above information is not provided, it will be presumed that applicant is the ultimate beneficial owner, with no declaration to submit. I/We also undertake to keep you informed in writing about any changes/modification to the above information in future and also undertake to provide any other additional information as may be required at your end.

12 DECLARATION AND SIGNATURE

Having read and understood the contents of the Scheme Information Document of the Scheme(s), I/We hereby apply for the units of the scheme(s) and agree to abide by the terms, conditions, rules and regulation governing the scheme(s). I/We hereby declare that the amount invested in the scheme(s) is through legitimate Sources only and does not involve and is not designed for the purpose of the contravention of any Act, Rules, Regulations, Notifications or Directions of the provisions of the income tax Act, Anti Money Laundering Laws, Anti Corruption Laws or any other applicable laws enacted by the Government of India from time to time. I/We have understood the details of the scheme (s) & I/We have not received nor have been induced by any rebate or gifts, directly or indirectly in making this investment. I/We confirm that the funds invested in the Scheme (s), legally belong to me/us. In the event "Know Your Customer" process is not completed by me/us to the satisfaction of the Mutual Fund, I/we hereby authorize the Mutual Fund, to redeem the funds invested in the Scheme(s), in Favour of the applicant, at the applicable NAV prevailing on the date of such redemption and undertake such other action with such funds that may be required by the law.

The ARN holder has disclosed to me/us all the commissions (in the form of trail commission or any other mode), payable to him for the different competing Scheme of various Mutual Funds from amongst which the Scheme is being recommended to me/us. For NRIs only : I/We confirm that I am/we are Non Residents of Indian nationality/origin and that I/We have remitted funds from abroad through approved banking channels or from funds in my/our Non-Resident External/Non-Resident Ordinary/FCNR Account. I/We confirm that the details provided by me/us are true and correct. I declare that the information is to the best of my Knowledge, belief, accurate and complete. I agree to notify MOMF/AMC immediately in the event of information changes.

FATCA / CRS Certification:

Declaration for Individual: I hereby confirm that the information provided hereinabove is true, correct, and complete to the best of my knowledge and belief and that I shall be solely liable and responsible for the information submitted above. I also confirm that I have read and understood the FATCA & CRS Terms and Conditions below and hereby accept the same. I also undertake to keep you informed in writing about any changes / modification to the above information in future within 30 days of the same being effective and also undertake to provide any other additional information as may be required any intermediary or by domestic or overseas regulators/ tax authorities

Declaration for Non-Individual: I / We have understood the information requirements of this Form (read along with the FATCA & CRS Instructions) and hereby confirm that the information provided by me / us on this Form is true, correct, and complete. I / We also confirm that I / We have read and understood the FATCA & CRS Terms and Conditions and hereby accept the same.

First / Sole Applicant / Guardian	Second Applicant	Third Applicant	Power of Attorney Holder
-----------------------------------	------------------	-----------------	--------------------------

Date: _____ Place: _____

INSTRUCTIONS FOR COMPLETING THE APPLICATION FORM

- 1 General Information**
- Please read the terms of the Key Information Memorandum (KIM) and the Scheme Information Document (SID) and Statement of Additional Information carefully before filling the Application Form. Investors are deemed to have accepted the terms subject to which this offer is being made and bind themselves to the terms upon signing the Application Form and tendering payment.
 - The Application Form should be completed in ENGLISH and in BLOCK LETTERS only. Please tick in the appropriate box for relevant options wherever applicable. Please do not overwrite. For any correction / changes (if any) made on the Application Form, the relevant applicants are requested to authenticate the same by canceling and re-writing the correct details and counter-signing the same. Applications completed in all respects, must be submitted at the Investor Service Centres (ISCs) / Official Points of Acceptance. Investors can also subscribe to the Units of all scheme of Motilal Oswal Mutual Fund through the mutual fund trading platforms viz. BSE STAR MF of Bombay Stock Exchange Limited and Mutual Fund Service System (MFSS) of National Stock Exchange of India Limited. For further details, investors are advised to contact ISCs of Kary or visit our website www.motilaloswal.com and www.motilaloswal.in. Please write the Serial Number of the Application Form / Folio Number on the reverse of the cheque / demand draft. Applications incomplete in any respect are liable to be rejected. The AMC / Trustee retains the sole and absolute discretion to reject an application.
 - Investments through distributors**
As per directions of Securities and Exchange Board of India (SEBI), the distributors, agents or any persons employed or engaged or to be employed or engaged in the sale and/or distribution of mutual fund products are required to have a valid certification from the National Institute of Securities Markets (NISM) by passing the certification examination. Further, no agents / distributors are entitled to sell units of mutual funds unless the intermediary is registered with Association of Mutual Funds in India (AMFI).
 - Applications on behalf of minors should be made by natural guardian (i.e. father or mother) or legal guardian (court appointed) and signed by them. The name of the Guardian should be filled in the relevant space provided in the Application Form. No joint applicant/joint holder is permitted with the minor beneficiary.
 - New cadre distributors:** SEBI has introduced a new cadre of distributors such as postal agents; retired government and semi-government officials (class III and above or equivalent), retired teachers and retired bank officers (all such retired persons with at least 10 years of service) and other similar persons (such as Bank correspondents) as may be notified by AMFI/AMC from time to time. Such New Cadre distributor can sell only 'simple and performing' diversified equity schemes, index funds and fixed maturity plans. There is a pre-fix of "SD" before the ARN number of such distributors. They also hold an EUN which must be quoted in the application form.
 - Employee Unique Identification Number (EUN)**
Further, SEBI has made it compulsory for every employee/relationship manager/ sales person of the distributor of mutual fund products to quote in the Application Form the EUN obtained by him/her from AMFI. EUN would assist in addressing any instance of mis-selling even if the employee/ relationship manager/sales person later leaves the employment of the distributor. Hence, if your investments are routed through a distributor please ensure that the EUN is correctly filled in the Application Form. However, if your distributor has not given you any advice pertaining to the investment, the EUN box may be left blank. In this case, you are required to provide a duly signed declaration to this effect, as given in the form.
 - Overseas Distributors**
Overseas Distributors are exempt from obtaining NISM certification and AMFI registration as per AMFI circular No. CIR/ARN-14/ 12-13 dated July 13, 2012 and the EUN requirement as per AMFI Circular No.135/BP/33/2012-13 dated December 31, 2012. However, such Overseas Distributors are required to comply with the guidelines/requirements as may be issued by AMFI/SEBI from time to time and also comply with the laws, rules and regulations of jurisdictions where they carry out their operations in the capacity of distributors.
 - Direct Investments**
Investors applying under Direct Plan must mention "Direct" in ARN No. column. In case Distributor code is mentioned in the Application Form, but "Direct Plan" is indicated against the Scheme/ Series name, the Distributor code will be ignored and the application will be processed under Direct Plan. In case of valid application received without indicating "Direct Plan" against the Scheme/ Series name and without any Distributor Code mentioned on the form, the application will be processed under "Direct Plan".
 - All Applicants are subject to detailed scrutiny and verification. Application Form incomplete in any respect or not accompanied by a Cheque /Demand Draft are liable to be rejected either at the collection centre itself or subsequently after detailed verification at the back office of the Registrars.
 - If the Scheme name on the application form and on the payment instrument are different, the application will be processed and units will be allotted at applicable NAV of the scheme mentioned in the application / transaction slip duly signed by investor(s).
 - E-mail Communication**
If the investor has provided an email address, the same will be registered in our records for communication and will be treated as your consent to receive , Allotment confirmations, consolidated account statement/account statement, annual report/abridged summary and any statutory / other information as permitted via electronic mode /email. These documents shall be sent physically in case the Unit holder opts/request for the same. Should the Unit holder experience any difficulty in accessing the electronically delivered documents, the Unit holder shall promptly intimate the Fund about the same to enable the Fund to make the delivery through alternate means. It is deemed that the Unit holder is aware of all security risks including possible third party interception of the documents and contents of the documents being known to third parties. The AMC / Trustee reserves the right to send any communication in physical mode.
- 2 Compliance and Prevention of Anti Money Laundering**
- Your attention is particularly drawn to the section on "Prevention of Money Laundering and Know Your Customer". All the applications with incomplete/incomplete information not accompanied with the necessary documents, shall be treated as invalid and shall be liable to be rejected. Prevention of Money Laundering Act, the SEBI Circulars on Anti Money Laundering (AML) and the Client Identification implementation procedures prescribed by AMFI inter alia require the AMC to verify the records of identity and address(es) of investors. It is mandatory for all applicants to submit necessary documents for compliance with Anti Money Laundering (guardian in case of minor). The AMC reserves the right to reject subscription requests in the absence of appropriate compliance with the AML Laws.
- 3 Applicant's Personal Information**
- Please furnish your name and complete postal address with the Pin Code (**P.O. Box No. Not enough**) and your Contact Nos. This would help us reach you faster.
 - Please furnish the name of Contact Person in case of investments by Company/ Body Corporate / Trust / Society / Ffils / Association of Person/ Body of Individuals.
 - KYC Compliance to file:** KYC is mandatory for all investors (including joint holders, guardians of minors and NRIs) to enclose a copy of KYC compliance to the application for investing in mutual fund schemes.
If you have not indicated your Tax Status in the Application Form, the same would be assumed to be others.
- 4 Bank Account Details**
- An investor at the time of purchase of units must provide the details of his / her pay-out bank account (i.e. account into which redemption dividend proceeds are to be paid).
- Bank account details provided in the application will be used for refunding rejected applications where DP ID is not matching. Investors are requested to provide Bank Account Detail linked with their Demat Account. In case of discrepancies Bank Account Details as per depository records will prevail.
- 5 Payment Details**
- Cheques should be crossed "**Alc Payee only**" and drawn in favour of **Motilal Oswal MOST Focused Long Term Fund, Motilal Oswal MOST Focused Multicap 35 Fund, Motilal Oswal MOST Focused Midcap 30 Fund, Motilal Oswal MOST Focused 25 Fund, Motilal Oswal MOST Focused Dynamic Equity Fund, Motilal Oswal MOST Ultra Short Term Bond Fund.**
 - Application Form along with the Cheque/Demand Draft may be lodged with Official Collection Centres.
 - If you are residing / located in a city / town where we do not have an Official Collection Centre, please draw a demand draft payable at your nearest city where we have such office.
 - Payment by Cash, Stock invests, Outstation Cheques and Non-MICR Cheques will not be accepted. Post-dated cheques will not be accepted.
- 6 Restriction on acceptance of Third Party Payments for subscription of units**
- Where payment is made through instruments issued from an account other than that of the beneficiary investor, the same is referred to as Third-Party Payment. In case of a payment from a joint bank account, the first holder of the mutual fund folio has to be one of the joint holders of the bank account from which payment is made. If this criterion is not fulfilled, then this is also construed to be a third party payment.
 - Application with Third Party payments will not be accepted except in the following cases:
 - Payment by Parents/Grandparents/related persons on behalf of a minor in consideration of natural love and affection or as gift for a value not exceeding ₹ 50,000/-
 - Payment by Employer on behalf of employee under Systematic Investment Plans through Payroll deductions.
 - Custodian on behalf of an FII or a client.
- 7 Demat Account**
- Investors have an option to hold the Units in dematerialized form. Investors desiring to get allotment of units in demat mode must have a beneficiary account with a Depository Participant (DP) of the Depositories i.e. National Securities Depositories Limited (NSDL) / Central Depository Services Limited (CDSL). If PAN is not mentioned by applicants, the application is liable to be rejected. Investors may attach a copy of the Client Master Form /DP statement showing active demat account details for verification. Names, mode of holding, PAN details, etc. of the Investor will be verified against the Depository data. The units will be credited to the beneficiary (demat) account only after successful verification with the depository records and realization of payment. In case the demat details mentioned in the application are incomplete/incorrect or do not match with the depository data, the application shall be treated as invalid for processing under demat mode and therefore may be considered for processing in non-demat form i.e. in physical mode if the application is otherwise valid. All details such as address, bank details, nomination etc. will be applicable as available in the depositories' records. For effecting any subsequent changes to such information, Investors should approach their DP. Redemption requests for units held in demat mode must be submitted to DP or through Stock Exchange Platform, as applicable. Holding / transferring of units held in demat mode shall be in accordance with the procedures / requirements laid down by the Depositories, viz. NSDL/ CDSL in accordance with the provisions under the Depositories Act, 1996 and the regulations thereunder.
- 8 NRIs/Fls**
- In case of NRI / Persons of Indian Origin, payment must be made either by cheque or demand draft by means of: (a) inward remittance through normal banking channels; or (b) out of funds held in the NRE / FCNR account, in the case of purchases on a non-repatriation basis. (In case of Indian Rupee drafts purchased from abroad or payments from FCNR/NRE accounts, a certificate from the Bank issuing the draft confirming the debit and /or foreign inward remittance certificate (FIRC) issued by investor's banker should also be enclosed. The Mutual Fund reserves the right to hold redemption proceeds in case the requisite details are not submitted).
 - Payment by the FII must be made either by inward remittance through normal banking channels or out of funds held in foreign currency account or Non-Resident Rupee Account maintained by the FII with a designated branch of an authorised dealer in terms of paragraph 2 of Schedule 2 to the FEMA Regulations.
- 9 Nomination Details**
- Applicants applying for units singly / jointly can make a nomination at the time of initial investment or during subsequent investments / during the tenure of the investment. Nomination can be made for maximum number of three nominees. In case of multiple nominees, the percentage of allocation/share in favour of each of the nominees should be indicated against their name and such allocation/share should be in whole numbers without any decimals making a total of 100 percent.

- In case of units held in demat mode, the nomination details provided to the Depository Participant shall be applicable.
- 10 Declaration and Signatures**
- Signature can be in English or in any other Indian Language. Thumb impressions must be attested by a Magistrate or Notary Public or a Special Executive Magistrate under his/her official seal.
 - Applications by minors must be signed on their behalf by their guardians.
 - If you are investing through your constituted attorney, please ensure that the PoA document is signed by you and your constituted Attorney. The signature in the Application Form, then needs to clearly indicate that the signature is on your behalf by the Constituted Attorney.
- 11 Transaction Charges**
- In terms of SEBI Circular, CIR/IMD/DF/13/2011 dated August 22, 2011, the distributors of mutual fund products are allowed to be paid transaction charges for purchase transactions:
- @ ₹100/- per subscription of ₹ 10,000/- and above in respect of existing unit holders; and
 - @ ₹150/- for subscription of ₹ 10,000/- and above in respect of a first time investor in mutual funds.
- The transaction charge shall be deducted from the subscription amount and paid to the distributors; and the balance shall be invested in the Scheme. The transaction charges and the net investment amount and the number of units allotted will be clearly mentioned in the Account Statement issued by the Mutual Fund.
- TRANSACTION CHARGES IN CASE OF INVESTMENTS THROUGH SIP:**
Transaction Charges in case of investments through SIP are deductible only if the total commitment of investment (i.e. amount per SIP instalment x No. of instalments) amounts to ₹ 10,000 or more. In such cases, Transaction Charges shall be deducted in 3-4 instalments. Transaction Charges shall not be deducted:
- where the Distributor of the investor has not opted to receive any Transaction Charges
 - for purchases / subscriptions / total commitment amount in case of SIP of an amount less than ₹ 10,000/-;
 - for transactions other than purchases / subscriptions relating to new inflows i.e. through Switches / Systematic Transfers / Dividend Transfers/ Dividend Reinvestment, etc.;
 - for purchases / subscriptions made directly with the Fund (i.e. not through any distributor); and
 - for purchases / subscriptions routed through Stock Exchange(s).
- 12 Systematic Investment Plan (SIP)**
- Monthly, Weekly, Fortnightly : Minimum ₹ 1,000 & 6 instalments**
Systematic Investment Plan (SIP)
(For Motilal Oswal MOST Focused Long Term Fund)
Minimum instalment amount - Rs.500/- and in multiples of Rs. 500/- thereafter (weekly/fortnightly/monthly/quarterly frequency)/ Minimum twelve instalments.
- Quarterly : Minimum ₹ 2,000 & 3 instalments**
Where the aggregate of the Lumpsum Investment (Fresh Purchase & Additional Purchase) and Micro SIP instalments by an investor based on the rolling 12 month period in a financial year i.e. April to March does not exceed ₹ 50,000/-, it shall be exempt from the requirement of PAN, (hereafter referred to as "Micro Investments").
- PAN requirement exemption will be available only to Micro Investments made by the individuals being Indian Citizens (Including NRIs, Joint Holders), Minor acting through Guardian and Sole proprietary firms not having PAN), Person of Indian Origin, Hindu Undivided Family (HUF), Qualified Foreign Investor (QFI) and other categories of investors will not be eligible for this exemption. However, the eligible investors are required to submit PAN exempt KYC issued by SEBI registered KRA (KYC Registration Authority). In case of joint holders, first holder must possess a PAN.
- (Application not complying with any of the above instruction/guidelines would be rejected.)**
- Any day / date SIP: SIP Frequency Choice of Day/Date***
- Weekly SIP- Any day of transfer from Monday to Friday.
 - Monthly SIP- Any date of the month except 29th, 30th and 31st
 - Quarterly SIP- Any date of the month for each quarter (i.e. January-March, April-June, July-September, October-December) except 29th, 30th and 31st
 - The SIP will be processed on the immediate next Business Day. In case the SIP date is not specified or in case of ambiguity, the SIP transaction will be processed on 7th of the subsequent month in which application for SIP registration was received. In case the end date is not specified, SIP will continue till it receives termination notice. All other terms and conditions of SIP facility will remain unchanged.
- Micro Systematic Investment Plan (SIP)**
- SEBI vide its circular dated 24th July 2012, conveyed that the investments aggregating ₹ 50,000 in a rolling 12 month period or in a financial year i.e. April to March, in all the schemes of Mutual Funds are exempt from the PAN requirement.
- Where the aggregate of the Lumpsum Investment (Fresh Purchase & Additional Purchase) and Micro SIP instalments by an investor based on the rolling 12 month period in a financial year i.e. April to March does not exceed ₹ 50,000/-, it shall be exempt from the requirement of PAN, (hereafter referred to as "Micro Investments").
- PAN requirement exemption will be available only to Micro Investments made by the individuals being Indian Citizens (Including NRIs, Joint Holders), Minor acting through Guardian and Sole proprietary firms not having PAN), Person of Indian Origin, Hindu Undivided Family (HUF), Qualified Foreign Investor (QFI) and other categories of investors will not be eligible for this exemption. However, the eligible investors are required to submit PAN exempt KYC issued by SEBI registered KRA (KYC Registration Authority). In case of joint holders, first holder must possess a PAN.
- (Application not complying with any of the above instruction/guidelines would be rejected.)**
- 13 PAN & Aadhar Details**
- It is mandatory for all investors to quote their Permanent Account Number (PAN) and Aadhar Number submit certified copy of the PAN card issued by the Income Tax Department and Aadhar Card, irrespective of the amount of investment, while making an application for Purchase of Units. In case of joint holding, PAN & Aadhar details of all holders should be submitted. In case the application is on behalf of minor, PAN & Aadhar details of the Guardian must be submitted. For non individual investor Aadhar details and Aadhar card copies of all the authorized signatories are required to submit. Investors residing in the state of Sikkim are exempt from the mandatory requirement of PAN proof submission; however sufficient documentary evidence shall have to be submitted for verifying that they are residents of the State of Sikkim. Applicants without the aforesaid details are liable to be rejected without any reference to the investors. Investment through Systematic Investment Plans (SIPs) upto ₹ 50,000/- (aggregate of instalments in a rolling 12 months period or in a financial year i.e. April - March) per year per investor shall be exempt from the requirement of PAN.
- 14 KYC REQUIREMENTS AND DETAILS**
- Basic KYC: Applicants are required to provide basic KYC details like photograph, proof of identity, proof of address, a KYC form and other details as per KYC form, to update their KYC with the fund and update on SEBI designated KYC Registration Authority (KRA) systems. If applicants have already complied with basic KYC through some other intermediary, they may just provide a KYC acknowledgement of valid KYC status available through the KRA. Basic KYC is applicable for all applicants, Guardian and Power of Attorney Holders as well.
 - Additional Details: Additional details like status, occupation details, gross annual income, net worth and other details as mentioned in the relevant sections of the application form are mandatory for all applicants as applicable, including joint holders. Details of net worth are mandatory for Non Individual applicants and optional for Individual applicants in lieu of gross annual income. While providing details of net worth, the same should be of a date which is within one year of the application.
 - Non Individual applicants, not being a company that is listed on any recognized stock exchange or is a subsidiary of such listed company or is controlled by such listed Company, are also required to submit a declaration of ultimate beneficial ownership in the mandated format as available on the website of the fund.
 - Applications are liable to be rejected without any intimation to the applicants, if KYC requirements are not complied with by all the applicants, KYC acknowledgement is not enclosed or any of the additional details are not mentioned for any of the applicant.
 - Investors should further note that KYC applicability for various investor categories may change anytime in future. Hence, investors are requested to apprise themselves about KYC applicability before submitting their application or future transactions to avoid rejections. For any other further information related to KYC, applicants should mention the same in a separate sheet, duly signed and attach to the application.
 - KYC Identification Number (KIN) is mandatory if KYC done via KYC. In case KIN is not available kindly fill KYC form as per the requirements of the Registrars. KYC is applicable to all investors.
 - Ultimate Beneficiary Owners**
Pursuant to SEBI Master Circular No. CIR/ISD/AML/3/2010 dated December 31, 2010 on Anti Money Laundering Standards and Guidelines on identification of Beneficial Ownership issued by SEBI vide its Circular No. CIR/MRSD/2/2013 dated January 24, 2013, Investors (other than individuals) are required to provide details of "Ultimate Beneficial Owner(s) (UBO(s))" in the separate format enclosed with this form & also available at www.motilaloswal.com. In case the investor or owner of the controlling interest is a company listed on a stock exchange or is a majority owned subsidiary of such a company, the details of shareholders or beneficial owners are not required to be provided. Non-individual applicants/investors are mandated to provide the details on "Ultimate Beneficial Owner(s) (UBO(s))" by filling up the declaration form for "Ultimate Beneficial Ownership". Please contact the nearest Investor Service Centre (ISC) of Motilal Oswal Mutual Fund or visit our website www.motilaloswal.com.
- 15 MODE OF PAYMENT**
- Payment may be made by cheque or bank draft drawn on any bank, which is situated at and is a member of the Bankers' Clearing House, located at the place where the application is submitted. Bank charges for outstation demand drafts will be borne by the AMC and will be limited to the bank charges stipulated by the State Bank of India. Outstation Demand Draft has been defined as a demand draft issued by a bank where there is no ISC available for investors. The AMC will not accept any request for refund of demand draft charges, in such cases.
- 16. FOREIGN ACCOUNT TAX COMPLIANCE (FATCA)**
- Politically Exposed Persons (PEP) are defined as individuals who are or have been entrusted with prominent public functions in a foreign country, e.g., Heads of States or of Governments, senior politicians, senior government/judicial/military officers, senior executives of state-owned corporations, important political party officials, etc.
 - Country of Tax Residence and Tax ID number: Tax Regulations require us to collect information about each investor's tax residency. In certain circumstances (including if we do not receive a valid self-certification from you) we may be obliged to share information on your account with relevant tax authorities. If you have any questions about your tax residence, please contact your tax advisor. Should any information provided change in the future, please ensure you advise us of the changes promptly. If you are a US citizen or resident, please include United States in this related field along with your US Tax Identification Number.

Distributor ARN / RIA#	Distributor Name	Sub-Distributor ARN/RIA#	Internal Sub-Broker/Employee Code	EJIN
ARN/RIA :		ARN		

#By mentioning RIA code, I/We authorize you to share with the SEBI Registered Investment Advisor the details of my/our transactions in the scheme(s) of Motilal Oswal Mutual Fund.
I/We hereby confirm that the EJIN box has been intentionally left blank by me/us as this is an "execution-only" transaction without any interaction or advice by the employee/relationship manager/sales person of the above distributor or notwithstanding the advice of in-appropriateness, if any, provided by the employee/relationship manager/sales person of the distributor and the distributor has not charged any advisory fees on this transaction.

First Holder

Second Holder

Third Holder

1 UNIT HOLDER INFORMATION

Mr. Ms. M/s

Existing Folio Number Existing UMRN

Name F I R S T M I D D L E L A S T

2 SYSTEMATIC INVESTMENT PLAN DETAILS

Scheme Motilal Oswal MOST Focused Dynamic Equity Fund Motilal Oswal MOST Focused Multicap 35 Fund Motilal Oswal MOST Focused 25 Fund
 Motilal Oswal MOST Focused Long Term Fund Motilal Oswal MOST Focused Midcap 30 Fund Motilal Oswal MOST Ultra Short Term Bond Fund

Plan and Option Regular Option Growth (Default Option) Div - Payout Div - Reinvest (Default Option) (N/A for MOST Focused Long Term)
 Applicable for Motilal Oswal MOST Focused Dynamic Equity Fund Quarterly Annually (Default Option)
 Applicable for Motilal Oswal MOST Ultra Short Term Bond Fund Daily Weekly Fortnightly Monthly Quarterly (Not Applicable for Dividend Payout Option)

SIP Frequency and Date

Weekly (1st, 7th, 14th, 21st, 28th)
 Fortnightly 1st-14 7th-21st 14th-28th
 Monthly 1st 7th 14th 21st 28th
 Quarterly 1st 7th 14th 21st 28th
 Annual SIP D D M M Y Y Y Y Y Y
 Any Day/Date SIP Weekly - Any Day of Transfer (Monday to Friday)
 Monthly SIP- Any date of the month except (29th, 30th and 31st)
 Quarterly SIP- Any date of the month for each quarter (i.e. January, April, July, October) except (29th, 30th and 31st)

SIP Period

From M M Y Y Y Y
 To M M Y Y Y Y
 or
 Perpetual SIP

SIP Amount Min. ₹ 1,000/- (Weekly/Fortnightly/Monthly), ₹ 2,000/- (Qtrly) & ₹ 5,000/- (Annual SIP) Minimum installment amount – Rs. 500/- and in multiples of Rs.500/- for MOST Focused Long Term

Amount per installment

3 DECLARATION AND SIGNATURE (To be signed by ALL UNIT HOLDERS if mode of holding is 'joint')

This is to confirm that the declaration/instruction has been carefully read, understood. I/We have understood that I/we are authorized to cancel/amend this mandate by appropriately communicating the cancellation/amendment request to the User entity or the bank where I have authorized the debit and express my willingness and authorize to make payments through participation in NACH/ECS/Direct Debit/Standing Instructions. I/We hereby confirm adherence to the terms of NACH/ECS (Debits)/Direct Debits/Standing Instructions. Authorization to Bank: This is to inform that I/We have registered for ECS / NACH (Debit Clearing) / Direct Debit / Standing instructions facility and that my/our payment towards my/our investment in Motilal Oswal Mutual Fund shall be made from my/our bank account with your Bank. I/We authorize the representatives Motilal Oswal Mutual Fund carrying this mandate form to get it verified and executed.

(Please attach a cancelled cheque/cheque copy)

First / Sole Applicant / Guardian / Authorised Signatory Second Applicant Third Applicant

(To be signed by all holders if mode of operation of Bank Account is 'Joint')

OTM Debit Mandate form NACH/ ECS/ Direct Debit [Applicable for Lumpsum Additional Purchases as well as SIP Registrations]

UMRN For Official Use Date D D M M Y Y Y Y Y Y

Tick (✓) Create Modify Cancel
 Sponsor Bank Code For Official Use Utility Code For Official Use
 I/We hereby authorize Motilal Oswal Mutual Fund To Debit (to tick ✓) SB CA CC SB-NRE SB-NRO Other
 Bank a/c number
 with Bank Name of customer bank IFSC Or MICR
 an amount of Rupees ₹

FREQUENCY Mthly Qtrly H.Yrly Yrly As & when presented DEBIT TYPE Fixed Amount Maximum Amount

Reference 1 Reference 2 Mob. No. Email ID

I agree for the debit of mandate processing charges by the bank whom I am authorizing to debit my account as per latest schedule of charges of the bank.

Period From D D M M Y Y Y Y Y Y To 3 1 1 2 2 0 9 9 Or Until cancelled
 1. Signature Primary account holder 2. Signature of account holder 3. Signature of account holder
 1. 2. 3.
 This is to confirm that the declaration has been carefully read, understood & made by me/us. I am authorizing the User entity/ Corporate to debit my account based on the instruction as agreed and signed by me. I have understood that I am authorized to cancel/ amend this mandate by appropriately communicating the cancellation/amendment request to the User entity/ corporate or the bank where I have authorized the debit

ACKNOWLEDGMENT SLIP (To be filled by the investor)

Application No.

Folio No. Investor Name
 Scheme Name Plan Option
 SIP Period From D D M M Y Y Y Y To D D M M Y Y Y Y Perpetual SIP

Stamp & Signature

FATCA & CRS Instructions

FATCA Instructions & Definitions Individual

FATCA & CRS TERMS & CONDITIONS

Note: The Guidance Note/notification issued by the CBDT shall prevail in respect to interpretation of the terms specified in the form)
Details under FATCA & CRS: The Central Board of Direct Taxes has notified Rules 114F to 114H, as part of the Income-tax Rules, 1962, which Rules require Indian financial institutions such as the Bank to seek additional personal, tax and beneficial owner information and certain certifications and documentation from all our account holders. In relevant cases, information will have to be reported to tax authorities/appointed agencies.

Should there be any change in any information provided by you, please ensure you advise us promptly, i.e., within 30 days. Please note that you may receive more than one request for information if you have multiple relationships with Motilal Oswal Mutual Fund or its group entities. Therefore, it is important that you respond to our request, even if you believe you have already supplied any previously requested information.

FATCA & CRS INSTRUCTIONS

If you have any questions about your tax residency, please contact your tax advisor. If you are a US citizen or resident or green card holder, please include United States in the foreign country information field along with your US Tax Identification Number.
It is mandatory to supply a TIN or functional equivalent if the country in which you are tax resident issues such identifiers. If no TIN is yet available or has not yet been issued, please provide an explanation and attach this to the form.

In case customer has the following India pertaining to a foreign country and yet declares self to be non-tax resident in the respective country, customer to provide relevant Curing Documents as mentioned below:

FATCA & CRS Indicia observed (ticked)	Documentation required for Cure of FATCA/ CRS Indicia
U.S. place of birth	1. Self-certification that the account holder is neither a citizen of United States of America nor a resident for tax purposes; 2. Non-US passport or any non-US government issued document evidencing nationality or citizenship (refer list below); and 3. Any one of the following documents: Certified Copy of "Certificate of Loss of Nationality or Reasonable explanation of why the customer does not have such a certificate despite renouncing US citizenship; or Reason the customer did not obtain U.S. citizenship at birth
Residence/mailing address in a country other than India	1. Self-certification that the account holder is neither a citizen of United States of America nor a tax resident of any country other than India; and 2. Documentary evidence (refer list below)
Telephone number in a country other than India	If no Indian telephone number is provided: 1. Self-certification that the account holder is neither a citizen of United States of America nor a tax resident of any country other than India; and 2. Documentary evidence (refer list below) If Indian telephone number is provided along with a foreign country telephone number: 1. Self-certification that the account holder is neither a citizen of United States of America nor a tax resident for tax purposes of any country other than India; OR 2. Documentary evidence (refer list below)

List of acceptable documentary evidence needed to establish the residence(s) for tax purposes:

1. Certificate of residence issued by an authorized government body*
 2. Valid identification issued by an authorized government body* (e.g. Passport, National identity card, etc.)
- *Government or agency thereof or a municipality of the country or territory in which the payee claims to be a resident.

FATCA Instructions & Definitions Non-Individual

(Note: The Guidance Note/notification issued by the CBDT shall prevail in respect to interpretation of the terms specified in the form)

The Central Board of Direct Taxes has notified Rules 114F to 114H, as part of the Income-tax Rules, 1962, which Rules require Indian financial institutions such as the Bank to seek additional personal, tax and beneficial owner information and certain certifications and documentation from all our account holders. In relevant cases, information will have to be reported to tax authorities/appointed agencies. Towards compliance, we may also be required to provide information to any institutions such as withholding agents for the purpose of ensuring appropriate withholding from the account or any proceeds in relation thereto.

Should there be any change in any information provided by you, please ensure you advise us promptly, i.e., within 30 days.

If any controlling person of the entity is a US citizen or resident or green card holder, please include United States in the foreign country information field along with the US Tax Identification Number.

It is mandatory to supply a TIN or functional equivalent if the country in which you are tax resident issues such identifiers. If no TIN is yet available or has not yet been issued, please provide an explanation and attach this to the form.

1. (i) **Financial Institution (FI)** - The term FI means any financial institution that is a Depository Institution, Custodial Institution, Investment Entity or Specified Insurance company, as defined.

(ii) **Depository institution:** is an entity that accepts deposits in the ordinary course of banking or similar business.

(iii) **Custodial institution** is an entity that holds a substantial portion of its business, holds financial assets for the account of others and where it's income attributable to holding financial assets and related financial services equals or exceeds 20 percent of the entity's gross income during the shorter of:

- (i) The three financial years preceding the year in which determination is made; or
- (ii) The period during which the entity has been in existence, whichever is less.

(iv) Investment entity is any entity;

(a) That primarily conducts a business or operates for or on behalf of a customer for any of the following activities or operations for or on behalf of a customer

- (i) Trading in money market instruments (cheques, bills, certificates of deposit, derivatives, etc.); foreign exchange; exchange, interest rate and index instruments; transferable securities; or commodity futures trading; or individual and collective portfolio management; or
- (ii) Investing, administering or managing funds, money or financial asset or money on behalf of other persons;

or

(b) The gross income of which is primarily attributable to investing, reinvesting, or trading in financial assets, if the entity is managed by another entity that is a depository institution, a custodial institution, a specified insurance

company, or an investment entity described above. An entity is treated as primarily conducting as a business one or more of the 3 activities described above, or an entity's gross income is primarily attributable to investing, reinvesting, or trading in financial assets of the entity's gross income attributable to the relevant activities equals or exceeds 50 percent of the entity's gross income during the shorter of:

- (i) The three-year period ending on 31 March of the year preceding the year in which the determination is made; or
- (ii) The period during which the entity has been in existence. The term "Investment Entity" does not include an entity that is an active non-financial entity as per codes 04, 05 and 06 and 07- refer point 2c.)

(v) Specified Insurance Company: Entity that is an insurance company (or the holding company of an insurance company) that issues, or is obligated to make payments with respect to, a Cash Value Insurance Contract or an Annuity Contract.

(vi) FI not required to apply for GIIN: Refer Rule 114F(5) of Income Tax Rules, 1962 for the conditions to be satisfied as "non-reporting financial institution and Guidance issued by CBDT in this regard.

A. Reasons why FI not required to apply for GIIN:

Code	Sub-category
01	Governmental Entity, International Organization, or Central Bank
02	Treaty Qualified Retirement Fund; a Broad Participation Retirement Fund; a Narrow Participation Retirement Fund; or a Pension Fund of a Governmental Entity, International Organization or Central Bank
03	Non-public fund of the armed forces, an employees state insurance fund, a gratuity fund or provident fund
04	Entity is an Indian FI solely because it is an investment entity
05	Qualified credit card issuer
06	Investment Advisors, Investment Managers & Executing Brokers
07	Exempt collective investment vehicle
08	Trust

(Continued overleaf)

SYSTEMATIC INVESTMENT PLAN DETAILS

1. The Mandate will be registered under the best suited mode i.e. NACH or ECS or SI at the discretion of its appointed payment Aggregator through whom the mandate will be registered for the SIP debit facility.
2. Unit holder(s) need to provide along with the mandate form an original cancelled cheque (or a copy) with name and account number pre-printed on the bank account to be registered for registration of the mandate failing which registration may not be accepted. The Unit holder(s) cheque/ bank account details are subject to third party verification.
3. Where the cancelled cheque or a copy of the cheque does not mention the bank account holder's name(s), Investor should provide self-attested bank pass book copy / bank statement / bank letter to substantiate that the first unit holder is one of the joint holder of the bank account. In case of a mismatch, it will be deemed to be a 3rd party payment and rejected except under the following exceptional circumstances:
 - a) Payment by parents / grand-parents / related person on behalf of a minor in consideration of natural love and affection or as gift provided the purchase value is less than or equal to '50,000/-' and KYC is completed for the registered Guardian and the person making the payment. However, single subscription value shall not exceed above '50,000/-' (including investment through each regular purchase or single SIP instalment). However, this restriction will not be applicable for payment made by a guardian whose name is registered in the records of Mutual Fund in that folio. Additional declaration in the prescribed format signed by the guardian and parents/grand -parents/related person is also required along with the application form.
 - b) Payment by an Employer on behalf of employee under Systematic Investment plans through Payroll deductions provided KYC is completed for the employee who is the beneficiary investor and the employer who is making the payment. Additional

- c) declaration in the prescribed format signed by employee and employer is also required along with the application form
 - c) Custodian on behalf of an FI or a Client provided KYC is completed for the investor and custodian. Additional declaration in the prescribed format signed by Custodian and FI/ Client is also required along with the application form .
4. Please note that in the event of a minor mismatch between the bank account number mentioned in the application form and as appearing in the cheque leaf submitted, bank account number would be updated based on the cancelled cheque leaf provided the name(s) of the investor/applicant appears in the cheque leaf.
5. **AUTHORISATION BY BANK ACCOUNT HOLDER(S)**
 a) Please indicate the name of the bank & branch, bank account number.
 b) If the mode of operation of bank account is joint, all bank account holders would need to sign at the place marked.
6. Applications incomplete in any respect are liable to be rejected. AMC/ Service Provider shall have absolute discretion to reject any such Application forms.
7. AMC or other service providers shall not be responsible and liable for any damages / compensation for any loss, damage etc. The investor assumes the entire risk of using this facility and takes full responsibility.
8. **DECLARATION & SIGNATURES**
 This section need to be signed by the applicant(s) / unit holder(s) at the places marked as per the mode of holding recorded with us (i.e. "Single", "Anyone or Survivor" or "Joint").

TERMS AND CONDITIONS FOR ECS (Debit Clearing)

1. The cities/banks/branches in the list may be modified /updated / changed / removed at any time in future entirely at the discretion of Motilal Oswal Mutual Fund without assigning any reasons or prior notice. If any city / bank/ branch is removed, SIP instructions for investors in such city/bank/branch via ECS (Debit Clearing) Direct Debit route will be discontinued without prior notice.
2. **List of Cities for SIP Auto Debit Facility via ECS (Debit Clearing):-**
 Agra, Ahmedabad, Allahabad, Amritsar, Anand, Asansol, Aurangabad, Bangalore, Bardhaman, Baroda, Belgaur, Bhavnagar, Bhiwani, Bhopal, Bhubaneswar, Bikaner, Bilaspur, Calicut, Chandigarh, Chennai, Cochin, Coimbatore, Cuttack, Davanagere, Dehradun, Delhi, Dhanbad, Durgapur, Erode, Gadag, Gangtok, Goa, Gorakhpur, Gulbarga, Guwahati, Gwalior, Haldia, Hasan, H u b l i, Hyderabad, Impal, Indore, Jabalpur, Jaipur, Jalandhar, Jammu, Jamnagar, Jamshepur, Jodhpur, Kakinada, Kanpur, Kolhapur, Kolkata, Kota, Lucknow, Ludhiana, Madurai, Mandya, Mangalore, Mumbai, Mysore, Nagpur, Nasik, Nellore, Patna, Pondicherry, Pune, Raichur, Raipur, Rajkot, Ranchi, Salem, Shillong, Shimla, Shimoga, Sholapur, Siliguri, Surat, Tirunelveli, Tirupati, Tiruppur, Trichur,

Trichy, Trivandrum, Tumkur, Udaipur, Udipi, Varanasi, Vijaywada, Vizag

List of Banks for SIP Direct Debit Facility:-

Allahabad Bank, Axis Bank, Bank of Baroda, Bank of India, Citi Bank, Corporation Bank, Federal Bank, ICICI Bank, IDBI Bank, IndusInd Bank, Kotak Mahindra Bank, Punjab National Bank, South Indian Bank, State Bank of India, State Bank of Patiala, UCO Bank, Union Bank of India, United Bank of India

3. Applications for SIP Auto Debit (ECS/Direct Debit) Facility would be accepted only if the bank branch participates in local MICR/ECS clearing.
4. In case the investor's bank chooses to cross verify the auto debit mandate with him/her as the bank's customer, investor would need to promptly act on the same. AMC/ Service Provider will not be liable for any transaction failures due to rejection of the transaction by investor's bank/ branch or its refusal to register the SIP mandate or any charges that may be levied by the Bank/ Branch on investor / applicant.

INSTRUCTIONS TO FILL THE NACH / ECS / SI MANDATE

1. UMRN Code, Sponsor Code, and Utility Code are for official use only. Please do not write anything in these boxes/spaces.
2. The following information has to be mandatorily filled in the Mandates. In case any of these fields are not filled, the mandate is liable for rejection.
 - a) Please tick the Appropriate Account Type and furnish the Bank Account Number from which the SIP installment/s is/are to be debited.
 - b) Please mention the Bank Name, 11 Digit IFSC code, 9 Digit MICR Code of your Bank in the appropriate boxes provided for the purpose. The MICR code is the number appearing next to the cheque number on the MICR band at the bottom of the cheque. In the absence of this information, Mandate registration is liable to be rejected.

- c) Please mention the maximum amount that can be debited using this mandate. The amount needs to be mentioned both in words as well as numbers.
 - d) Please mention your Mobile Number and Email ID on the mandate form.
 - e) Please provide the Start and End date for the period which the Mandate should be active. If you do not wish to provide an End date, please tick the check box for 'Until Cancelled'.
3. **SIGNATURES**
 The mandate needs to be signed by all the account holders in line with the mode of holding recorded with the investor's bank. The Account holder's names have to be mentioned as per their mode of holding in Account.

FATCA Instructions & Definitions Non-Individual

(Note: The Guidance Note/notification issued by the CBDT shall prevail in respect to interpretation of the terms specified in the form)

09	Non-registering local banks
10.	FFI with only Low-Value Accounts
11.	Sponsored investment entity and controlled foreign corporation
12.	Sponsored, Closely Held Investment Vehicle

2. Active Non-financial entity (NFE) - Foreign entity that is not a financial institution: (any one of the following): Refer Explanation (A) to 114F(6) of income Tax Reule, 1962 for details.

Code	Sub-category
01	Less than 50 percent of the NFE's gross income for the preceding financial year is passive income and less than 50 percent of the assets held by the NFE during the preceding financial year are assets that produce or are held for the production of passive income;
02	The stock of the entity is regularly traded on an established securities market or the non-financial entity is a related entity of an entity, the stock of which is regularly traded on an established securities market.
03	The NFE is a Governmental Entity, an International Organization, a Central Bank, or an entity wholly owned by one or more of the foregoing;
04	Substantially all of the activities of the NFE consist of holding (in whole or in part) the outstanding stock of, or providing financing and services to, one or more subsidiaries that engage in trades or businesses other than the business of a Financial Institution, except that an entity shall not qualify for this status if the entity functions as an investment fund, such as a private equity fund, venture capital fund, leveraged buyout fund, or any investment vehicle whose purpose is to acquire or fund companies and then hold interests in those companies as capital assets for investment purposes;
05	The NFE is not yet operating a business and has no prior operating history, but is investing capital into assets with the intent to operate a business other than that of a Financial Institution, provided that the NFE shall not qualify for this exception after the date that is 24 months after the date of the initial organization of the NFE;
06	The NFE was not a Financial Institution in the past five years, and is in the process of liquidating its assets or is reorganizing with the intent to continue or recommence operations in a business other than that of a Financial Institution;
07	The NFE primarily engages in financing and hedging transactions with, or for, Related Entities that are not Financial Institutions, and does not provide financing or hedging services to any Entity that is not a Related Entity, provided that the group of any such Related Entities is primarily engaged in a business other than that of a Financial Institution;
08	Any NFE that fulfills all of the following requirements: <ul style="list-style-type: none"> • It is established and operated in India exclusively for religious, charitable, scientific, artistic, cultural, athletic, or educational purposes; or it is established and operated in India and it is a professional organization, business league, chamber of commerce, labor organization, agricultural or horticultural organization, civic league or an organization operated exclusively for the promotion of social welfare; • It is exempt from income tax in India; • It has no shareholders or members who have a proprietary or beneficial interest in its income or assets; The applicable laws of the NFE's country or territory of residence or the NFE's formation documents do not permit any income or assets of the NFE to be distributed to, or applied for the benefit of, a private person or non-charitable Entity other than pursuant to the conduct of the NFE's charitable activities, or as payment of reasonable compensation for services rendered, or as payment representing the fair market value of property which the NFE has purchased; and The applicable laws of the NFE's country or territory of residence or the NFE's formation documents require that, upon the NFE's liquidation or dissolution, all of its assets be distributed to a governmental entity or other non-profit organization, or escheat to the government of the NFE's country or territory of residence or any political subdivision thereof. <p>Explanation - For the purpose of this sub-clause, the following shall be treated as fulfilling the criteria provided in the said sub-clause, namely:-</p> (i) an Investor Protection Fund referred to in clause (23EA); (ii) a Credit Guarantee Fund Trust for Small Industries referred to in clause 23EB; and (iii) an Investor Protection Fund referred to in clause (23C), of section 10 of the Act;

3. Other definitions:

(i) Related entity

An entity is a 'related entity' of another entity if either entity controls the other entity, or the two entities are under common control for this purpose, control includes direct or indirect ownership of more than 50% of the votes and value in an entity.

(ii) Passive NFE

The term passive NFE means

- (i) any non-financial entity which is not an active non-financial entity; or
- (ii) an investment entity defined in clause 1 (iv) (b) of these instructions
- (iii) a withholding foreign partnership or withholding foreign trust;

(iii) Passive income

The term passive income includes income by way of:

- (1) Dividends,
- (2) Interest,
- (3) Income equivalent to interest,
- (4) Rents and royalties, other than rents and royalties derived in the active conduct of a business conducted, at least in part, by employees of the NFE
- (5) Annuities
- (6) The excess of gains over losses from the sale or exchange of financial assets that gives rise to passive income
- (7) The excess of gains over losses from transactions (including futures, forwards, options and similar transactions) in any financial assets,
- (8) The excess of foreign currency gains over foreign currency losses
- (9) Net income from swaps
- (10) Amounts received under cash value insurance contracts

But passive income will not include, in case of a non-financial entity that regularly acts as a dealer in financial assets, any income from any transaction entered into in the ordinary course of such dealer's business as such a dealer.

(iv) Controlling persons

Controlling persons are natural persons who exercise control over an entity and includes a beneficial owner under sub-rule (3) of rule 9 of the Prevention of Money-Laundering (Maintenance Records) Rules, 2005.

In determining the beneficial owner, the procedure specified in the following circular as amended from time to time shall be applied, namely:-

(i) DBOD, AML BC. No.71/14.01.001/2012-13, issued on the 18th January, 2013 by the Reserve Bank of India, or

(ii) CIR/MIRSD/2/2013, issued on the 24th January, 2013 by the Securities and Exchange Board of India, or

(iii) IRDA/SOD/GDL/CIR/019/02/2013, issued on the 4th February, 2013 by the Insurance Regulatory and Development Authority.

In the case of trust, the controlling person means the settlor, the trustees, the protector (if any), the beneficiaries or class of beneficiaries, and any other natural person exercising ultimate effective control over the trust, and in the case of a legal arrangement other than a trust, the said expression means the person in equivalent or similar position;(A) Controlling Person Type:

Code	Sub-category:
01	CP of legal person-ownership
02	CP of legal person-other means
03	CP of legal person-senior managing official
04	CP of legal arrangement - trust-settlor
05	CP of legal arrangement - trust-trustee
06	CP of legal arrangement - trust-protector
07	CP of legal arrangement - trust-beneficiary
08	CP of legal arrangement - trust-other
09	CP of legal arrangement - Other-settlor equivalent
10	CP of legal arrangement - Other-trustee equivalent
11	CP of legal arrangement - Other-protector equivalent
12	CP of legal arrangement - Other-beneficiary equivalent
13	CP of legal arrangement - Other-other equivalent
14	Unknown

(v) Specified U.S. person - A U.S person other than the following:

- (i) a corporation the stock of which is regularly traded on one or more established securities markets;
- (ii) any corporation that is a member of the same expanded affiliated group, as defined in section 1471(e)(2) of the U.S. Internal Revenue Code, as a corporation described in clause (i);
- (iii) the United States or any wholly owned agency or instrumentality thereof;
- (iv) any State of the United States, any U.S. Territory, any political subdivision of any of the foregoing, or any wholly owned agency or instrumentality of any one or more of the foregoing;
- (v) any organization exempt from taxation under section 501(a) of the U.S. Internal Revenue Code or an individual retirement plan as defined in section 7701(a)(37) of the U.S. Internal Revenue Code;
- (vi) any bank as defined in section 581 of the U.S. Internal Revenue Code;
- (vii) any real estate investment trust as defined in section 856 of the U.S. Internal Revenue Code;
- (viii) any regulated investment company as defined in section 851 of the U.S. Internal Revenue Code or any entity registered with the U.S. Securities and Exchange Commission under the Investment Company Act of 1940 (15 U.S.C. 80a-64);
- (ix) any common trust fund as defined in section 584(a) of the U.S. Internal Revenue Code;
- (x) any trust that is exempt from tax under section 664©) of the U.S. Internal Revenue Code or that is described in section 4947(a)(1) of the U.S. Internal Revenue Code;
- (xi) a dealer in securities, commodities, or derivative financial instruments (including notional principal contracts, futures, forwards, and options) that is registered as such under the laws of the United States or any State;
- (xii) a broker as defined in section 6045©) of the U.S. Internal Revenue Code; or
- (xiii) any tax-exempt trust under a plan that is described in section 403(b) or section 457(g) of the U.S. Internal Revenue Code.

(vi) Direct reporting NFE

A direct reporting NFFE means a NFFE that elects to report information about its direct or indirect substantial U.S. owners to the IRS.

(vii) Exemption code for U.S. persons (Refer 114F(9) of Income Tax Rules, 1962 for details).

Code	Sub-category
A	An organization exempt from tax under section 501(a) or any individual retirement plan as defined in section 7701(a)(37)
B	The United States or any of its agencies or instrumentalities
C	A state, the District of Columbia, a possession of the United States, or any of their political subdivisions or instrumentalities
D	A corporation the stock of which is regularly traded on one or more established securities markets, as described in Reg. section 1.1472-1(C)(1)(i)
E	A corporation that is a member of the same expanded affiliated group as a corporation described in Reg. section 1.1472-1(c)(1)(i)
F	A dealer in securities, commodities, or derivative financial instruments (including notional principal contracts, futures, forwards, and options) that is registered as such under the laws of the United States or any state
G	A real estate investment trust
H	A regulated investment company as defined in section 851 or an entity registered at all times during the tax year under the Investment Company Act of 1940
I	A common trust fund as defined in section 584(a)
J	A bank as defined in section 581
K	A broker
L	A trust exempt from tax under section 664 or described in section 4947(a)(1)
M	A tax exempt trust under a section 403(b) plan or section 457(g) plan

Application Type* New Update KYC No. _____

KYC Type* Normal (PAN is mandatory) PAN Exempt Investors (Refer instruction K)

1 Identity Details (Please refer instruction A at the end)

PAN _____ Please enclose a duly attested copy of your PAN Card

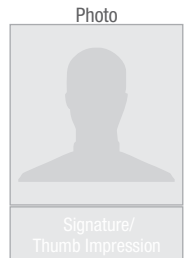
Prefix _____
 Name* (same as ID Proof) _____ F I R S T _____ M I D D L E _____ L A S T _____
 Maiden Name (If any*) _____ F I R S T _____ M I D D L E _____ L A S T _____
 Father / Spouse Name* _____ F I R S T _____ M I D D L E _____ L A S T _____
 Mother Name* _____ F I R S T _____ M I D D L E _____ L A S T _____

Date of Birth* _____ Gender* Male Female Transgender Marital Status* Married Unmarried Others

Citizenship* Indian Others – Country _____ Country Code _____

Residential Status* Resident Individual Non Resident Indian Foreign National Person of Indian Origin

Occupation Type* Service Private Sector Public Sector Government Sector Professional Self Employed Retired
 Housewife Student Business Not Categorised Others



2 Proof of Identity (PoI)* (for PAN exempt Investor or if PAN card copy not provided) (Please refer instruction C & K at the end)

(Certified copy of any one of the following Proof of Identity [PoI] needs to be submitted)

Passport Number _____ Passport Expiry Date _____ D D M M Y Y Y Y
 Voter ID Card _____ Aadhaar No. _____
 Driving Licence _____ Driving Licence Expiry Date _____ D D M M Y Y Y Y
 NREGA Job Card _____
 Others (any document notified by the central government) _____ Identification No _____

3 Proof of Address (PoA)* **3.1 Current / Permanent / Overseas Address Details** (Please see instruction D at the end)

Address _____
 City / Town / Village* _____ District* _____ Pin Code* _____
 State/UT* _____ State/UT Code _____ Country* _____ Country Code _____
 as per Indian Motor Vehicle Act, 1988 as per ISO 3166

Address Type* Residential / Business Residential Business Registered Office Unspecified

(Certified copy of any one of the following Proof of Address [PoA] needs to be submitted)

Proof of Address*
 Passport Number _____ Passport Expiry Date _____ D D M M Y Y Y Y
 Voter ID Card _____ Aadhaar No. _____
 Driving Licence _____ Driving Licence Expiry Date _____ D D M M Y Y Y Y
 NREGA Job Card _____
 Others (any document notified by the central government) _____ Identification No _____

3.2 Correspondence / Local Address Details* (Please see instruction E at the end)

Same as Current / Permanent / Overseas Address details (In case of multiple correspondence / local addresses, please fill 'Annexure A1', Submit relevant documentary proof)

Address _____
 City / Town / Village* _____ District* _____ Pin Code* _____
 State/UT* _____ State/UT Code _____ Country* _____ Country Code _____
 as per Indian Motor Vehicle Act, 1988 as per ISO 3166

4 Contact Details (All communications will be sent on provided Mobile no. / Email-ID) (Please refer instruction F at the end)

Email ID _____ Mobile _____
 Tel. (off) _____ Tel. (Resi) _____

Instructions/Guidelines for filling Individual KYC Application Form

General Instructions:

1. Self-Certification of documents is mandatory.
2. KYC number of applicant is mandatory for update/change of KYC details.
3. For particular section update, please tick () in the box available before the section number and strike off the sections not required to be updated.
4. Copies of all documents that are submitted need to be compulsorily self-attested by the applicant and accompanied by originals for verification. In case the original of any document is not produced for verification, then the copies should be properly attested by entities authorized for attesting the documents, as per the list mentioned under [I].
5. If any proof of identity or address is in a foreign language, then translation into English is required.
6. Name & address of the applicant mentioned on the KYC form, should match with the documentary proof submitted.
7. If correspondence & permanent addresses are different, then proofs for both have to be submitted.
8. Sole proprietor must make the application in his individual name & capacity.
9. For non-residents and foreign nationals, (allowed to trade subject to RBI and FEMA guidelines), copy of passport/P/IOCard/OCI/OCICard and overseas address proof is mandatory.
10. In case of Merchant Navy NRI's, Mariner's declaration or certified copy of CDC (Continuous Discharge Certificate) is to be submitted.
11. For opening an account with Depository participant or Mutual Fund, for a minor, photocopy of the School Leaving Certificate/Mark sheet issued by Higher Secondary Board/ Passport of Minor/Birth Certificate must be provided.

A. Clarification / Guidelines on filling 'Identity Details' section

1. Name: Please state the name with Prefix (Mr/Mrs/MS/Dr/etc.). The name should match the name as mentioned in the Proof of Identity submitted failing which the application is liable to be rejected.
2. Either father's name or spouse's name is to be mandatorily furnished. In case PAN is not available father's name is mandatory.

B. Clarification/Guidelines on filling details if applicant residence for tax purposes in jurisdiction(s) outside India

1. Tax identification Number (TIN): TIN need not be reported if it has not been issued by the jurisdiction. However, if the said jurisdiction has issued a high integrity number with an equivalent level of identification (a "Functional equivalent"), the same may be reported. Examples of that type of number for individual include, a social security/insurance number, citizen/personal identification/services code/number, and resident registration number)

C. Clarification / Guidelines on filling 'Proof of Identity [PoI]' section, if PAN Card copy is not enclosed/For PAN exempt Investors

1. If driving license number or passport is provided as proof of identity then expiry date is to be mandatorily furnished.
2. Mention identification / reference number if 'Z – Others (any document notified by the central government)' is ticked.
3. Others – Identity card with applicant's photograph issued by any of the following: Central/ State Government Departments, Statutory/Regulatory Authorities, Public Sector Undertakings, Scheduled Commercial Banks, Public Financial Institutions, Colleges affiliated to Universities, Professional Bodies such as ICAI, ICWAI, ICSI, Bar Council, etc., to their Members; and Credit cards/Debit cards issued by Banks.
4. Letter issued by a gazetted officer, with a duly attested photograph of the person.

D. Clarification / Guidelines on filling 'Proof of Address [PoA] section

1. PoA to be submitted only if the submitted PoI does not have an address or address as per PoI is invalid or not in force.
2. State / U.T Code and Pin / Post Code will not be mandatory for Overseas addresses.
3. Others includes – Utility bill which is not more than two months old of any service provider (electricity, telephone, post-paid mobile phone, piped gas, water bill); Bank account or Post Office savings bank account statement; Documents issued by Government departments of foreign jurisdictions and letter issued by Foreign Embassy or Mission in India; Identity card with applicant's photograph and address issued by any of the following: Central/

State Government Departments, Statutory/Regulatory Authorities, Public Sector Undertakings, Scheduled Commercial Banks, Public Financial Institutions, Colleges affiliated to Universities, Professional Bodies such as ICAI, ICWAI, ICSI, Bar Council, etc., to their Members; and Credit cards/Debit cards issued by Banks.

E. Clarification / Guidelines on filling 'Proof of Address [PoA] - Correspondence / Local Address details' section

1. To be filled only in case the PoA is not the local address or address where the customer is currently residing. No separate PoAs required to be submitted.
2. In case of multiple correspondence / local addresses, Please fill 'Annexure A1'
3. Others includes – Utility bill which is not more than two months old of any service provider (electricity, telephone, post-paid mobile phone, piped gas, water bill); Bank account or Post Office savings bank account statement; Documents issued by Government departments of foreign jurisdictions and letter issued by Foreign Embassy or Mission in India; Identity card with applicant's photograph and address issued by any of the following: Central/ State Government Departments, Statutory/Regulatory Authorities, Public Sector Undertakings, Scheduled Commercial Banks, Public Financial Institutions, Colleges affiliated to Universities, Professional Bodies such as ICAI, ICWAI, ICSI, Bar Council, etc., to their Members; and Credit cards/Debit cards issued by Banks.

F. Clarification / Guidelines on filling 'Contact details' section

1. Please mention two- digit country code and 10 digit mobile number (e.g. for Indian mobile number mention 91-9999999999).
2. Do not add '0' in the beginning of Mobile number.

G. Clarification / Guidelines on filling 'Related Person details' section

1. Provide KYC number of related person if available.

H. Clarification / Guidelines on filling 'Related Person details – Proof of Identity [PoI] of Related Person' section

1. Mention identification / reference number if 'Z- Others (any document notified by the central government)' is ticked.

I. List of people authorized to attest the documents after verification with the originals:

1. Authorised officials of Asset Management Companies (AMC).
2. Authorised officials of Registrar & Transfer Agent (R&T) acting on behalf of the AMC.
3. KYD compliant mutual fund distributors.
4. Notary Public, Gazetted Officer, Manager of a Scheduled Commercial/Co-operative Bank or Multinational Foreign Banks (Name, Designation & Seal should be affixed on the copy).
5. In case of NRIs, authorized officials of overseas branches of Scheduled Commercial Banks registered in India, Notary Public, Court Magistrate, Judge, Indian Embassy/ Consulate General in the country where the client resides are permitted to attest the documents.
6. Government authorised officials who are empowered to issue Apostille Certificates.

J. List of people authorized to perform In Person Verification (IPV):

1. Authorised officials of Asset Management Companies (AMC).
2. Authorised officials of Registrar & Transfer Agent (R&T) acting on behalf of the AMC.
3. KYD compliant mutual fund distributors.
4. Manager of a Scheduled Commercial/Co-operative Bank or Multinational Foreign Banks (for investors investing directly).
5. In case of NRI applicants, a person permitted to attest documents, may also conduct the In Person Verification and confirm this in the KYC Form.

K. PAN Exempt Investor Category

1. Investments (including SIPs), in Mutual Fund schemes up to INR 50,000/- per investor per year per Mutual Fund.
2. Transactions undertaken on behalf of Central/State Government, by officials appointed by Courts, e.g., Official liquidator, Court receiver, etc.
3. Investors residing in the state of Sikkim.
4. UN entities/multilateral agencies exempt from paying taxes/filing tax returns in India.

List of Two-Digit state / U.T Codes as per Indian Motor Vehicle Act, 1988

State / U.T	Code	State / U.T	Code	State / U.T	Code
Andaman & Nicobar	AN	Himachal Pradesh	HP	Pondicherry	PY
Andhra Pradesh	AP	Jammu & Kashmir	JK	Punjab	PB
Arunachal Pradesh	AR	Jharkhand	JS	Rajasthan	RJ
Assam	AS	Karnataka	KA	Sikkim	SK
Bihar	BR	Kerala	KL	Tamil Nadu	TN
Chandigarh	CH	Lakshadweep	LD	Telangana	TS
Chhattisgarh	CG	Madhya Pradesh	MP	Tripura	TR
Dadra and Nagar Haveli	DN	Maharashtra	MH	Uttar Pradesh	UP
Daman & Diu	DD	Manipur	MN	Uttarakhand	UK
Delhi	DL	Meghalaya	ML	West Bengal	WB
Goa	GA	Mizoram	MZ	Other	XX
Gujarat	GJ	Nagaland	NL		
Haryana	HR	Orissa	OR		

List of ISO 3166 Two-Digit Country Code

Country	Country Code	Country	Country Code	Country	Country Code	Country	Country Code
Afghanistan	AF	Dominican Republic	DO	Libya	LY	Saint Martin (French part)	MF
Åland Islands	AX	Ecuador	EC	Liechtenstein	LI	Saint Pierre and Miquelon	PM
Albania	AL	Egypt	EG	Lithuania	LT	Saint Vincent and the Grenadines	VC
Algeria	DZ	El Salvador	SV	Luxembourg	LU	Samoa	WS
American Samoa	AS	Equatorial Guinea	GQ	Macao	MO	San Marino	SM
Andorra	AD	Eritrea	ER	Macedonia, the Former Yugoslav Republic of	MK	Sao Tome and Principe	ST
Angola	AO	Estonia	EE	Madagascar	MG	Saudi Arabia	SA
Anguilla	AI	Ethiopia	ET	Malawi	MW	Senegal	SN
Antarctica	AQ	Falkland Islands (Malvinas)	FK	Malaysia	MY	Serbia	RS
Antigua and Barbuda	AG	Faroe Islands	FO	Maldives	MV	Seychelles	SC
Argentina	AR	Fiji	FJ	Mali	ML	Sierra Leone	SL
Armenia	AM	Finland	FI	Malta	MT	Singapore	SG
Aruba	AW	France	FR	Marshall Islands	MH	Sint Maarten (Dutch part)	SX
Australia	AU	French Guiana	GF	Martinique	MQ	Slovakia	SK
Austria	AT	French Polynesia	PF	Mauritania	MR	Slovenia	SI
Azerbaijan	AZ	French Southern Territories	TF	Mauritius	MU	Solomon Islands	SB
Bahamas	BS	Gabon	GA	Mayotte	YT	Somalia	SO
Bahrain	BH	Gambia	GM	Mexico	MX	South Africa	ZA
Bangladesh	BD	Georgia	GE	Micronesia, Federated States of	FM	South Georgia and the South Sandwich Islands	GS
Barbados	BB	Germany	DE	Moldova, Republic of	MD	South Sudan	SS
Belarus	BY	Ghana	GH	Monaco	MC	Spain	ES
Belgium	BE	Gibraltar	GI	Mongolia	MN	Sri Lanka	LK
Belize	BZ	Greece	GR	Montenegro	ME	Sudan	SD
Benin	BJ	Greenland	GL	Montserrat	MS	Suriname	SR
Bermuda	BM	Grenada	GD	Morocco	MA	Svalbard and Jan Mayen	SJ
Bhutan	BT	Guadeloupe	GP	Mozambique	MZ	Swaziland	SZ
Bolivia, Plurinational State of	BO	Guam	GU	Myanmar	MM	Sweden	SE
Bonaire, Sint Eustatius and Saba	BQ	Guatemala	GT	Namibia	NA	Switzerland	CH
Bosnia and Herzegovina	BA	Guernsey	GG	Nauru	NR	Syrian Arab Republic	SY
Botswana	BW	Guinea	GN	Nepal	NP	Taiwan, Province of China	TW
Bouvet Island	BV	Guinea-Bissau	GW	Netherlands	NL	Tajikistan	TJ
Brazil	BR	Guyana	GY	New Caledonia	NC	Tanzania, United Republic of	TZ
British Indian Ocean Territory	IO	Haiti	HT	New Zealand	NZ	Thailand	TH
Brunei Darussalam	BN	Heard Island and McDonald Islands	HM	Nicaragua	NI	Timor-Leste	TL
Bulgaria	BG	Holy See (Vatican City State)	VA	Niger	NE	Togo	TG
Burkina Faso	BF	Honduras	HN	Nigeria	NG	Tokelau	TK
Burundi	BI	Hong Kong	HK	Niue	NU	Tonga	TO
Cambodia	KH	Hungary	HU	Norfolk Island	NF	Trinidad and Tobago	TT
Cameroon	CM	Iceland	IS	Northern Mariana Islands	MP	Tunisia	TN
Canada	CA	India	IN	Norway	NO	Turkey	TR
Cape Verde	CV	Indonesia	ID	Oman	OM	Turkmenistan	TM
Cayman Islands	KY	Iran, Islamic Republic of	IR	Pakistan	PK	Turks and Caicos Islands	TC
Central African Republic	CF	Iraq	IQ	Palau	PW	Tuvalu	TV
Chad	TD	Ireland	IE	Palestine, State of	PS	Uganda	UG
Chile	CL	Isle of Man	IM	Panama	PA	Ukraine	UA
China	CN	Israel	IL	Papua New Guinea	PG	United Arab Emirates	AE
Christmas Island	CX	Italy	IT	Paraguay	PY	United Kingdom	GB
Cocos (Keeling) Islands	CC	Jamaica	JM	Peru	PE	United States	US
Colombia	CO	Japan	JP	Philippines	PH	United States Minor Outlying Islands	UM
Comoros	KM	Jersey	JE	Pitcairn	PN	Uruguay	UY
Congo	CG	Jordan	JO	Poland	PL	Uzbekistan	UZ
Congo, the Democratic Republic of the	CD	Kazakhstan	KZ	Portugal	PT	Vanuatu	VU
Cook Islands	CK	Kenya	KE	Puerto Rico	PR	Venezuela, Bolivarian Republic of	VE
Costa Rica	CR	Kiribati	KI	Qatar	QA	Viet Nam	VN
Côte d'Ivoire	CI	Korea, Democratic People's Republic of	KP	Réunion	RE	Virgin Islands, British	VG
Croatia	HR	Korea, Republic of	KR	Romania	RO	Virgin Islands, U.S.	VI
Cuba	CU	Kuwait	KW	Russian Federation	RU	Wallis and Futuna	WF
Curaçao	CW	Kyrgyzstan	KG	Rwanda	RW	Western Sahara	EH
Cyprus	CY	Lao People's Democratic Republic	LA	Saint Barthélemy	BL	Yemen	YE
Czech Republic	CZ	Latvia	LV	Saint Helena, Ascension and Tristan da	SH	Zambia	ZM
Denmark	DK	Lebanon	LB	Cunha	KN	Zimbabwe	ZW
Djibouti	DJ	Lesotho	LS	Saint Kitts and Nevis	LC		
Dominica	DM	Liberia	LR	Saint Lucia			

Supplementary CKYC Form

Know Your Client (KYC) Application Form (For Individuals only)

(Please fill the form in English and in BLOCK Letters) Fields marked with "*" are mandatory fields

KYC Type* Normal (PAN is mandatory) PAN Exempt Investors

1 Identity Details (Please refer instruction A at the end)

PAN Please enclose a duly attested copy of your PAN Card

Prefix

Name* (same as ID Proof) F I R S T M I D D L E L A S T

Maiden Name (If any*) F I R S T M I D D L E L A S T

Mother Name* F I R S T M I D D L E L A S T

Residential Status* Resident Individual Non Resident Indian Foreign National Person of Indian Origin

Occupation Type* Service Private Sector Public Sector Government Sector Others Professional Self Employed Retired

Housewife Student Business Not Categorised

2 FATCA/CRS information (Tick if Applicable) Residence for Tax Purposes in Jurisdiction(s) Outside India (Please refer instruction B at the end)

Additional Details Required* (Mandatory only if above option is ticked)

Country of Jurisdiction of Residence* Country Code of Jurisdiction of Residence as per ISO 3166

Tax Identification Number or equivalent (If issued by jurisdiction)*

Place / City of Birth* Country of Birth* Country Code as per ISO 3166

Address

City / Town / Village* District* Pin Code*

State/UT* State/UT Code Country* Country Code
as per Indian Motor Vehicle Act, 1988 as per ISO 3166

3 Details of Related Person (Optional) (please refer instruction G at the end) (in case of additional related persons, please fill 'Annexure B1')

Related Person Deletion of Related Person KYC Number of Related Person (if available*)

Related Person Type* Guardian of Minor Assignee Authorized Representative

Name* Prefix F I R S T M I D D L E L A S T
(If KYC number and name are provided, below details of section 6 are optional)

Proof of Identity [PoI] of Related Person* (Please see instruction (H) at the end)

(Certified copy of any one of the following Proof of Identity[PoI] needs to be submitted)

Passport Number Passport Expiry Date

Voter ID Card Aadhaar No.

Pan Card

Driving Licence Driving Licence Expiry Date

NREGA Job Card

Others (any document notified by the central government) Identification No

4 Remarks (If any)

5 Applicant Declaration

- I hereby declare that the details furnished above are true and correct to the best of my knowledge and belief and I undertake to inform you of any changes therein, immediately. In case any of the above information is found to be false or untrue or misleading or misrepresenting, I am aware that I may be held liable for it. I hereby declare that I am not making this application for the purpose of contravention of any Act, Rules, Regulations or any statute of legislation or any notifications/directions issued by any governmental or statutory authority from time to time.
- I hereby consent to receiving information from Central KYC Registry through SMS/Email on the above registered number/email address.

[Signature / Thumb Impression]

Date Place

Signature / Thumb Impression of Applicant

Instructions/Guidelines for filling Individual KYC Application Form

General Instructions:

1. Self-Certification of documents is mandatory.
2. KYC number of applicant is mandatory for update/change of KYC details.
3. For particular section update, please tick () in the box available before the section number and strike off the sections not required to be updated.
4. Copies of all documents that are submitted need to be compulsorily self-attested by the applicant and accompanied by originals for verification. In case the original of any document is not produced for verification, then the copies should be properly attested by entities authorized for attesting the documents, as per the list mentioned under [I].
5. If any proof of identity or address is in a foreign language, then translation into English is required.
6. Name & address of the applicant mentioned on the KYC form, should match with the documentary proof submitted.
7. If correspondence & permanent addresses are different, then proofs for both have to be submitted.
8. Sole proprietor must make the application in his individual name & capacity.
9. For non-residents and foreign nationals, (allowed to trade subject to RBI and FEMA guidelines), copy of passport/PIOCard/OCI Card and overseas address proof is mandatory.
10. In case of Merchant Navy NRI's, Mariner's declaration or certified copy of CDC (Continuous Discharge Certificate) is to be submitted.
11. For opening an account with Depository participant or Mutual Fund, for a minor, photocopy of the School Leaving Certificate/Mark sheet issued by Higher Secondary Board/ Passport of Minor/Birth Certificate must be provided.
12. Note - supplementary form is mandatory for existing investor who is KYC compliant.

A. Clarification / Guidelines on filling 'Identity Details' section

1. Name: Please state the name with Prefix (Mr/Mrs/Ms/Dr/etc.). The name should match the name as mentioned in the Proof of Identity submitted failing which the application is liable to be rejected.
2. Either father's name or spouse's name is to be mandatorily furnished. In case PAN is not available father's name is mandatory.

B. Clarification/Guidelines on filling details if applicant residence for tax purposes in jurisdiction(s) outside India

1. Tax identification Number (TIN): TIN need not be reported if it has not been issued by the jurisdiction. However, if the said jurisdiction has issued a high integrity number with an equivalent level of identification (a "Functional equivalent"), the same may be reported. Examples of that type of number for individual include, a social security/ insurance number, citizen/personal identification/services code/number, and resident registration number)

CENTRAL KYC REGISTRY | Know Your Customer (KYC) Application Form | Individual | Correspondence / Local Address

Important Instructions

- A) Fields marked with '*' are mandatory fields.
- B) Please fill the form in English and in BLOCK letters.
- C) Please fill the date in DD-MM-YYYY format.
- D) Please read section wise detailed guidelines / instructions at the end.
- E) List of State / U.T code as per Indian Motor Vehicle Act, 1988 is available at the end.
- F) List of two character ISO 3166 country codes is available at the end.
- G) KYC number of applicant is mandatory for update application.
- H) For particular section update, please tick (✓) in the box available before the section number and strike off the sections not required to be updated.

For office use only (To be filled by financial institution)

Application Type* New Update

KYC Number (Mandatory for KYC update request)

1 Correspondence/ Local Address Details (Please see instruction E at the end)

Same as Current / Permanent / Overseas Address details

City / Town / Village* District* Pin/ Post Code*

State/U.T. Code* ISO 3166 Country Code*

2 CONTACT DETAILS (All communications will be sent on provided Mobile no./ Email-ID) (Please refer instruction F at the end)

Tel. (off)

Mobile

Email ID

Tel. (Resi)

Fax

3 APPLICANT DECLARATION

I hereby declare that the details furnished above are true and correct to the best of my knowledge and belief and I undertake to inform you of any changes therein, immediately. In case any of the above information is found to be false or untrue or misleading or misrepresenting, I am aware that I may be held liable for it.

Date Place

[Signature / Thumb Impression]

Signature / Thumb Impression of Applicant

5. INVESTMENT & PAYMENT DETAILS

Payment Type (Please ✓) : Non - Third Party Payment Third Party Payment (please fill the attached Third Party Payment Declaration Form - 4)

MOVI Pack Plan Motilal Oswal Value Index (MOVI) Pack Plan is a Systematic Transfer Plan (STP) from select debt/liquid scheme into select equity scheme that enables allocation between debt and equity asset classes.

A. One Time Investment

Motilal Oswal MOST Ultra Short Term Bond Fund

Plan: Direct Regular (*Default Plan)

Option: Growth Div - Payout Monthly Quarterly

Div - Reinvest Daily Weekly Fortnightly
(Default Option) Monthly Quarterly

- Motilal Oswal MOST Focused 25 Fund* (*Default Transferee Scheme)
- Motilal Oswal MOST Focused Midcap 30 Fund
- Motilal Oswal MOST Focused Multicap 35 Fund
- Motilal Oswal MOST Focused Dynamic Equity Fund

B. STP

Motilal Oswal MOST Ultra Short Term Bond Fund

Plan: Direct* Regular (*Default Plan)

Option: Growth** Div - Payout Monthly Quarterly

Div - Reinvest (Default Option)
 Daily Weekly Fortnightly Monthly Quarterly

STP Amount (₹) _____ Min ₹ 1000 STP Date : 15 of every month

STP Period From To Perpetual Other
minimum 6 installments

- Motilal Oswal MOST Focused 25 Fund* (*Default Transferee Scheme)
- Motilal Oswal MOST Focused Midcap 30 Fund
- Motilal Oswal MOST Focused Multicap 35 Fund
- Motilal Oswal MOST Focused Dynamic Equity Fund

Payment Detail (Please provide details for investment in MOVI Pack Plan)

Cheque DD RTGS NEFT Funds transfer

Amount (₹) _____

Instrument No. _____ Date

Bank Name _____ Branch & City _____

Account No. _____

Account Type Current Savings NRO NRE FCNR

Note :- Transfer : This transfer is made from the Transferor Scheme (Motilal Oswal MOST Ultra Short Term Bond Fund) to the Transferee Scheme (Motilal Oswal MOST Focussed 25 Fund – Growth), Motilal Oswal MOST Focused Midcap 30 Fund and Motilal Oswal MOST Focused Multicap 35 Fund on the date of allocation based on MOVI levels.

Reverse Transfer : This transfer is made from the Transferee Scheme to the Transferor Scheme, when appreciation in the market value of the Transferee Scheme results in a breach of the prescribed allocation level as determined by MOVI.

6. BANK DETAILS (Mandatory) Redemption/ Dividend/ Refund payout will be credited into this bank account case it is in the current list of bank with whom Motilal Oswal Mutual Fund has Direct Credit facility.

Name of the Bank _____ Branch _____

Account Number _____ City _____

Account Type Current Savings NRO NRE FCNR Others _____ (please specify)

MICR Code _____ RTGS/NEFT Code _____

I/We understand that the instructions to the bank for Direct Credit / NEFT / ECS will be given by the Mutual Fund, and such instructions will be adequate discharge of the Mutual Fund towards redemption / dividend / refund proceeds. In case the bank does not credit my /our bank account with / without assigning any reason thereof, or if the transaction is delayed or not effected at all or credited into the wrong account for reasons of incomplete or incorrect information, I/We would not hold Motilal Oswal Mutual Fund responsible. Further the Mutual Fund reserves the right to issue a demand draft / payable at par cheque in case it is not possible to make payment by DC/NEFT/ECS.

If however the unit holders wish to receive a cheque (instead of a direct credit into their bank account) please tick the box alongside

7. NOMINATION DETAILS (Mandatory information. Please select the desired option.)

I/We wish to nominate. I/We DO NOT wish to nominate and sign here _____ 1st Applicant Signature (Mandatory)

	Nominee Name	Guardian Name (In case of Minor)	% (Percentage)	Nominee Signature
Nominee 1				
Nominee 2				
Nominee 3				
Address			Total = 100%	

8. DECLARATION & SIGNATURES

Having read and understood the contents of the Scheme Information Documents of the Scheme(s), I/We hereby apply for the units of the Scheme(s) and agree to abide by the terms, conditions, rules and regulations governing the Scheme(s). I/We hereby declare that the amount invested in the Scheme(s) is through legitimate sources only and does not involve and is not designed for the purpose of the contravention of any Act, Rules, Regulations, Notifications or Directions of the provisions of the Income Tax Act, Anti Money Laundering Laws, Anti Corruption Laws or any other applicable laws enacted by the Government of India from time to time. I/We have understood the details of the Scheme(s) & I/We have not received nor have been induced by any rebate or gifts, directly or indirectly in making this investment. I/We confirm that the funds invested in the Scheme(s), legally belong to me / us. In the event " Know Your Customer" process is not completed by me / us to the satisfaction of the Mutual Fund, I/We hereby authorise the Mutual Fund, to redeem the funds invested in the Scheme(s), in favour of the applicant, at the applicable NAV prevailing on the date of such redemption and undertake such other action with such funds that may be required by the Law. The ARN holder has disclosed to me / us all the commissions (in the form of trail commission or any other mode), payable to him for the different competing Schemes of various Mutual Funds from amongst which the Scheme is being recommended to me / us. For NRIs only: I/We confirm that I am / we are Non Residents of Indian nationality / origin and that I / We have remitted funds from abroad through approved banking channels or from funds in my / our Non-Resident External / Non-Resident Ordinary / FCNR Account. I / we having read the SID, do hereby authorize MOAMC upon my / our request being valid, to allocate or rebalance my / our investment in the schemes. I/We understand that upon such act, MOAMC or its associates are not liable for any loss arising out of such authorization. I/We confirm that the details provided by me / us are true and correct. I/We having read and understood the terms and conditions of MOVIE PACK PLAN.

<input checked="" type="checkbox"/> X First / Sole Applicant / Guardian	<input type="checkbox"/> Second Applicant	<input type="checkbox"/> Third Applicant	<input type="checkbox"/> POA Holder
---	---	--	-------------------------------------

*Applicable to application under Direct Plan: I/We hereby declare and confirm that I/We have read and understood the Scheme related documents pertaining to the "Direct Plan" and also confirm that the investments in Scheme through "Direct Plan" is/are made at my own discretion. Motilal Oswal Mutual Fund/MOAMC/Trustee shall not be liable for any consequences arising out of such investments.



Motilal Oswal Asset Management Company Limited
10th Floor, Motilal Oswal Tower, Rahimtullah Sayani Road,
Opposite Parel ST Depot, Prabhadevi, Mumbai - 400025
Email: mfservice@motilaloswal.com. Toll Free No.: 1800-200-6626

TERMS AND CONDITIONS

Motilal Oswal Value Indicator (MOVI) Pack Plan is a Systematic Transfer Plan (STP) from select debt/liquid scheme into select equity scheme that enables allocation between debt and equity asset classes. It allows Unitholders holding units in non-demat form to take advantage of fluctuations in equity market valuations and not just market levels based on MOVI. Under this facility, Investors may opt to transfer amounts from Motilal Oswal MOST Ultra Short Term Bond Fund (referred to as Transferor Scheme) to Motilal Oswal MOST Focused 25 Fund/ Motilal Oswal MOST Focused Midcap 30 Fund and Motilal Oswal MOST Focused Multicap 35 Fund (referred to as Transferee Scheme) with allocations based on MOVI levels. The transfers will be enabled in the reverse as well.

- The Enrolment Form should be completed in ENGLISH and in BLOCK LETTERS only. Please tick in the appropriate box and do not overwrite. The Enrolment Form complete in all respects should be submitted at any of the Official Points of Acceptance of Motilal Oswal Mutual Fund.
- Enrolment forms incomplete in any respect are liable to be rejected. The AMC / Trustee retain the sole and absolute discretion to reject any enrolment form.
- Investors are advised to read the Scheme Information Document of the Schemes and Statement of Additional Information carefully before investing. The Scheme Information Document(s) / Key Information Memorandum(s) of the Scheme(s) and Statement of Additional Information are available with the ISCs of Motilal Oswal Mutual Fund, brokers/distributors and also displayed at the Motilal Oswal Mutual Fund website i.e. www.motilaloswal.com/Assetmanagement
- Motilal Oswal Value Indicator (MOVI) helps gauge equity market. The Indicator is calculated taking into account Price to Earnings, Price to Book and Dividend Yield of the CNX Nifty Index.
A low MOVI level indicates that the market valuation appears to be cheap and one may allocate a higher percentage of their investments to Equity as an asset class. A high MOVI level indicates that the market valuation appears to be expensive and that one may reduce their equity allocation.
India Index Services & Products Ltd. (IISL) is the calculating agent of MOVI. IISL shall calculate, compile, maintain and provide MOVI values to Motilal Oswal Asset Management Company Ltd.
- Transfer: This transfer is made from the Transferor Scheme to the Transferee Scheme, on the date of allocation based on MOVI levels.
Reverse Transfer: This transfer is made from the Transferee Scheme to the Transferor Scheme, when appreciation in the market value of the Transferee Scheme results in a breach of the prescribed allocation level as determined by MOVI.

Illustrations:

Equity and Debt Allocation Matrix at different MOVI levels

MOVI Levels	Equity	Debt
Less Than 70	100%	0%
70 <80	90%	10%
80 <90	80%	20%
90 <100	70%	30%
100 <110	55%	45%
110 <120	40%	60%
120 <130	25%	75%
Greater Than 130	0%	100%

Equity and Debt allocations based on 90 Day Moving Average of MOVI to eliminate anomalies. Equity & Debt allocations arrived at by using historical data.

How does the MOVI Pack Plan work? – Motilal Oswal MOVI Pack Plan consists of two parts as explained below; transfer & reverse transfer. The following example illustrates how MOVI Pack Plan with a Monthly Interval will work.

Transfer

Case 1 (STP):

Date	Installment Amount	MOVI	As per Allocation Matrix		Market Movements		Allocation on Monthly Balance (Not Ideal)		Allocation on Cumulative Balance (Ideal)	
			Equity	Debt	Equity	Debt	Equity	Debt	Equity	Debt
15th Jan	1,000	85	80%	20%	-	-	800	200	800	200
15th Feb	1,000	95	70%	30%	10%	10%	700	300	1442	618
15th Mar	1,000	105	55%	45%	0%	0%	550	450	1683	1377
Total Investments							2050	950	1683	1377
% Spilt							68.33%	31.67%	55.00%	45.00%

Let's assume, an Investor opts for a Systematic Transfer Plan under the MOVI Pack Plan for an amount of ₹ 1,000 (Column B) on a monthly basis. Starting the plan from January (Column A), we observe the MOVI value to be 85 (Column C) on 15th January. As per the allocation matrix, (Columns D and E) the Equity and Debt allocation is 80% in Equity and 20% in Debt. Out of the first installment of ₹ 1,000, ₹ 800 will be invested in Motilal Oswal MOST Focused 25 Fund/ Motilal Oswal MOST Focused Midcap 30 Fund / Motilal Oswal MOST Focused Multicap 35 Fund (Equity) and ₹ 200 will be invested in Motilal Oswal Ultra Short Term Bond Fund (Debt).

Now let's assume in the next month, on 15th February, MOVI is at 95. As per the allocation matrix, the allocation is 70% in Equity and 30% in Debt. Before we go ahead and allocate the second installment of ₹ 1,000, we need to account for the change in value of the previous investment (Columns F and G). This is the most critical part of the allocation. Assuming the initial ₹ 800 in Equity has risen by 10% to ₹ 880 and ₹ 200 in Debt has fallen by 10% to ₹ 180, then a mechanical allocation of ₹ 700 in Equity and ₹ 300 in Debt (Columns H and I) would not be ideal as it eliminates the impact of market movements on previous investments.

Therefore, we need to ensure that allocation of the 2nd installment of ₹ 1,000 is made in such a way that allocation for investments at the cumulative level is aligned to the allocation matrix. Hence, we will invest ₹ 562 in Equity and ₹ 438 in Debt (Columns J and K) which will take the total value of investments under Equity to ₹ 1,442 and under Debt to ₹ 648 thus translating into an allocation of 70% in Equity and 30% in Debt. The same applies to the third installment made in the month of March assuming no change in market value.

Reverse Transfer:

This transfer is made from the transferee scheme to the transferor scheme for any excess value in the transferee scheme that cannot be adjusted by deployment of fresh capital to ensure that overall allocation is aligned to the allocation matrix. Reverse transfer, if required, will occur on the date of allocation.

Case 2 (One Time Investment):

Date	Installment Amount	MOVI	As per Allocation Matrix		Market Movements		Allocation on Monthly Balance (Not Ideal)		Allocation on Cumulative Balance (Ideal)	
			Equity	Debt	Equity	Debt	Equity	Debt	Equity	Debt
15th Jan	10,000	85	80%	20%	-	-	8,000	2,000	8,000	2,000
15th Feb	-	95	70%	30%	10%	10%	8,800	1,800	7,420	3,180
1st Mar	10,000	98	70%	30%	-5%	5%	15,360	4,890	14,272	6,116
15th Mar	-	105	55%	45%	0%	0%	15,360	4,890	11,213	9,175
Total Investments							15,360	4,890	11,213	9,175
% Spilt							75.85%	24.15%	55.00%	45.00%

TERMS AND CONDITIONS (CONTD.)

Assuming an Investor opts for a One Time investment option under the MOVI Pack Plan for an amount of ₹ 10,000 (Column B), let's say on 15th of January (Column A). Starting the plan from January, we observe the MOVI value to be 85 (Column C) on 15th January. As per the allocation matrix, the Equity and Debt allocation is 80% in Equity and 20% in Debt (Columns D and E). Out of the first installment of ₹ 10,000, ₹ 8,000 will be invested in Motilal Oswal Focused 25 Fund/ Motilal Oswal MOST Focused Midcap 30 Fund/ Motilal Oswal MOST Focused Multicap 35 Fund (Equity) and ₹ 2,000 will be invested in Motilal Oswal Ultra Short Term Bond Fund (Debt).

Now let's assume in the next month, on 15th February, MOVI is at 95. As per the allocation matrix the Equity and Debt allocation is 70% in Equity and 30% in Debt. Since there is no fresh incoming capital, unlike in the STP enrolment option, we need to take into consideration the change in value of the initial investment and re-allocate.

Assuming the initial ₹ 8,000 in Equity has risen by 10% to ₹ 8,800 and ₹ 2,000 in Debt has fallen by 10% to ₹ 1,800, (Columns F and G) we need to re-allocate the investments so as to align them to the allocation matrix. This is done by redeeming units (Reverse Transfer) in Motilal Oswal Focused 25 Fund, Motilal Oswal MOST Focused Midcap 30 Fund and Motilal Oswal MOST Focused Multicap 35 Fund to bring down its value to ₹ 7,420 (Column J) which means that the Equity allocation is now 70%, and transferring to Motilal Oswal Ultra Short Term Bond Fund to raise its value to ₹ 3,180 (Column K) which takes the Debt allocation to 30%, in-line with the Allocation Matrix as of 15th February.

Any additional investment, under One Time Investment enrolment option, will be allocated in a way similar to the systematic enrolment option to ensure allocation at the cumulative level is aligned to the allocation matrix.

For example, on 1st March there is an additional investment of ₹ 10,000. The Equity and Debt funds have returned -5% and 5% respectively as of 1st March, from the last date of allocation i.e. 15th of February. The Equity and Debt allocation as per the allocation matrix is unchanged at 70% and 30% respectively, since MOVI is at 98. Therefore, this investment of ₹ 10,000 will be allocated in a way which ensures investments at the cumulative level are aligned to the allocation matrix.

Under the 'One Time Investment' enrolment option, in addition to the 15th, reverse transfer may occur on any other date when an additional investment is made into the MOVI Pack Plan.

Disclaimer: The above are only illustrations explaining the concept of MOVI Pack Plan using assumed figures. The illustrations are merely indicative in nature and should not be construed as investment advice. They do not in any manner imply or suggest performance of any Motilal Oswal Mutual Fund Schemes(s). MOVI Pack Plan neither assures a profit nor guarantees protection against a loss in declining market.

6. This Plan presently offers two enrolment options:

- One Time Investment
- Systematic Transfer Plan (STP) with a minimum of 6 installments.

7. Minimum amount under this Plan is as follows:

Options	Minimum Amount of Transfer (₹)
One Time Investment	₹ 5000/- and in multiples of ₹ 1/- thereafter
STP	₹ 1000/- and in multiples of ₹ 1/- thereafter

8. The date of allocation will be the 15th of every month. In case the date of allocation falls on a Non-Business Day or falls during a book closure period, the immediate following Business Day will be considered as the date of allocation.

Note: Under 'One Time Investment' enrolment option, in addition to the 15th of every month, allocation will occur on the business day succeeding the date of enrolment into the MOVI Pack Plan.

Under the 'STP' enrolment option, if the Unitholder has an existing Systematic Investment Plan (SIP) in the Transferor scheme where the date of SIP falls on a date later than or on 15th of every month, then allocation for that amount will occur on 15th of the subsequent month.

- On the date of allocation, the prescribed percentage of the amount will be transferred in the Transferee Scheme at the closing NAV of the same day i.e. date of allocation.
- The AMC will require 7 calendar days from the date of submission of valid enrolment forms to register the Investor under this Plan. Therefore, in the intervening period i.e. date of submission of enrolment form and date of registration, if the date of allocation is crossed, then the same will be considered at the next date of allocation.
- The amount transferred under this Plan from the Transferor Scheme to Transferee Scheme shall be effective by redeeming units of Transferor Scheme at applicable NAV, (subject to the applicable exit load, if any) and subscribing to the units of the Transferee Scheme at applicable NAV on the date of allocation. The units will be subscribed to the growth option in the Transferee Scheme and processed accordingly.
- Unitholders can discontinue the Plan at any time by providing a written request which shall be made effective within 7 calendar days of the date of receipt of the said request.
- This Plan will be automatically terminated if all units are liquidated or withdrawn or pledged or upon receipt of intimation of death of the unit holder.
- Unitholders should note that investor details and mode of holding (single, joint, anyone or survivor) in the Transferee Scheme will be as per the existing folio number of the Transferor Scheme. Units will be allotted under the same folio number.
- The redemption of units under this Plan by way of transfer/ Reverse transfer would be subject to applicable taxes, if any. For details on taxation, please refer to the Section on 'Taxation on investing in Mutual Funds' in SAI. In view of individual nature of tax consequences, each client is advised to consult their professional tax advisor in regard to tax treatment for their investments / redemption.
- In case the amounts (as specified) to be transferred are not available in the Transferor Scheme in the Unitholder's account, the Plan will be discontinued. Further, in case there is all unit redemption and Unit balance in the Transferor Scheme is reduced to Nil then this Plan will be discontinued.
- One folio will allow only one MOVI Registration for Plan A (Source : US & Target : MF/FM/CP).
- MOVI Pack Plan in any manner whatsoever is not an assurance or promise or guarantee on part of Motilal Oswal Mutual Fund/Motilal Oswal Asset Management Company Limited to the Unit holders in terms of returns or capital appreciation or minimization of loss of capital or otherwise.
- Movi Pack Plan will not be applicable on the fresh inflows in the Transferee Scheme.
- If no Scheme is selected in the Transferee scheme, Motilal Oswal Most Focused 25 Fund will be considered as the default scheme.
- The Trustee reserves the right to change/modify the terms and conditions of this Plan or withdraw this Plan at a later date.