



**Introduction to:
Motilal Oswal NASDAQ 100 ETF and
Motilal Oswal NASDAQ 100 Fund of Fund**

THINK EQUITY. THINK MOTILAL OSWAL.

Table of Contents



- **About NASDAQ 100 Index**
- **Why NASDAQ 100 Index?**
- **Performance**
- **Why invest now?**
- **What Motilal Oswal AMC offers?**

About NASDAQ 100 Index

Introduction: NASDAQ 100 Index



The NASDAQ-100 Index[®] includes 100 of the largest non-financial companies listed on The Nasdaq Stock Market[®], based on market capitalization.

Attributes:

- Includes **top 100 domestic and international** non-financial companies listed at NASDAQ Stock Market.
- Index reflects companies across **computer hardware, and software, telecommunications, retail/wholesale trade and biotechnology.**
- In order to avoid concentration, the maximum weight of any **index constituent is capped at 24%**; further total weight of stock with weight greater than 4.5% is capped at 48%.
- Index is **reviewed in December** each year
- Index has **very long track record**, first index values starts **since January 31, 1985** with **base value of 125.**
- While the Nasdaq-100 is home to some of the most well-known names in technology— including **Apple, Microsoft, Alphabet, Intel, and Facebook**—the index also includes category-defining companies on the forefront of innovation in other key industries such as **Amgen, Starbucks, and Tesla.**

Source: https://indexes.nasdaqomx.com/docs/methodology_NDX.pdf; Data as of Mar 31, 2020; for detailed index methodology please log on to source website. The Stocks mentioned above are used to explain the concept and is for illustration purpose only and should not used for development or implementation of an investment strategy. It should not be construed as investment advice to any party. The stocks may or may not be part of our portfolio/strategy/ schemes. Past performance may or may not be sustained in future

Index Stock Selection Highlight



Listing:	All securities must be exclusively listed at NASDAQ
Sector Exclusion:	Only security issued by a non-financial company is eligible
Liquidity:	Average Daily traded Volume > 2,00,000 shares over past 3 months
Company Selection:	Top 100 companies by total market capitalization , subject to buffer of 25 companies
Weighting:	Maximum weight of constituent is capped at 24% ; further total weight of stocks with weight > 4.5% is capped at 48%
Rebalancing:	Constituents' weight is rebalanced each quarter ; while the index undergoes reconstitution each year in December

Source: https://indexes.nasdaqomx.com/docs/methodology_NDX.pdf; Data as of Mar 31, 2020; for detailed index methodology please log on to source website.

Index Key Facts



- **Index Launch Date:** January 31, 1985
- **Base Index Value:** 125.00
- **Calculation Frequency:** Real Time
- **Calculation Currency:** USD, HKD, CAD, GBP, CHF, and EUR
- **Number of Companies:** 100
- **Number of Securities:** 103
- **Index Rebalancing:** Quarterly (weight) and Annually (composition)

Top 10 Companies and their weights



12.0%



11.2%



9.6%



8%



4%



3%



2.1%



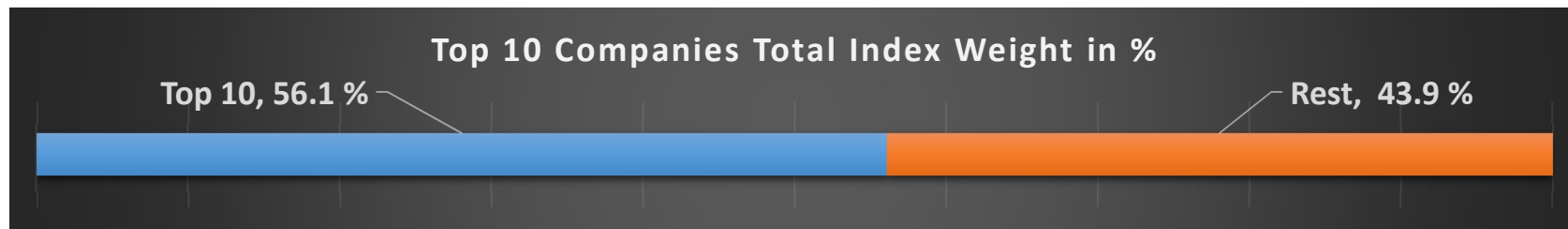
2.1%



2.1%



2.0%

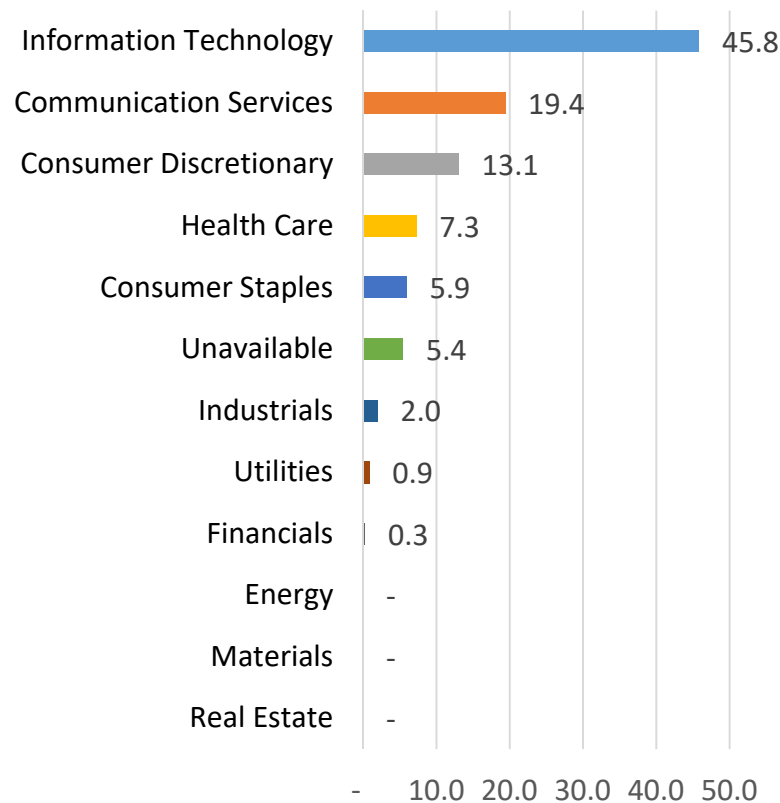


Source: <https://indexes.nasdaqomx.com/>; Data as of Mar 31, 2020; for detailed index methodology please log on to source website. The Stocks mentioned above are used to explain the concept and is for illustration purpose only and should not used for development or implementation of an investment strategy. It should not be construed as investment advice to any party. The stocks may or may not be part of our portfolio/strategy/ schemes. Past performance may or may not be sustained in future.

Index Composition Breakdown



GICS Sector Index Weight (%)



Weights (in %) by Size[^]

Size	Index Weight
Large (> \$ 12.9 Billion)	100.00%
Mid (> \$ 2.7 Billion)	0
Small (> \$ 0.6 Billion)	0
Micro (< \$ 0.6 Billion)	0
Total	100.00%

Weights (in %) by Geography [^]

Country	Index Weight
United States	98.51%
China	1.25%
Netherlands	0.24%
Total	100.00%

Source: www.indexes.nasdaqomx.com/; FactSet. For size and geographic breakup data of Investco NASDAQ 100 ETF from FactSet used as proxy. Data as of Mar 31, 2020; The sector mentioned herein are for general and comparison purpose only and not a complete disclosure of every material fact. It should not be construed as investment advice to any party. Past performance may or may not be sustained in future.

Why NASDAQ 100 Index?

Low Correlation, offers diversification

Correlation Matrix (15 Year)	Nifty 500 TRI (INR)	^S&P 500 TRI (INR)	^NASDAQ 100 TRI (INR)
Nifty 500 TRI (INR)	1	0.1945	0.1543
^S&P 500 TRI (INR)		1	0.9375
^NASDAQ 100 TRI (INR)			1

Lower the correlation number, better the diversification opportunity offered

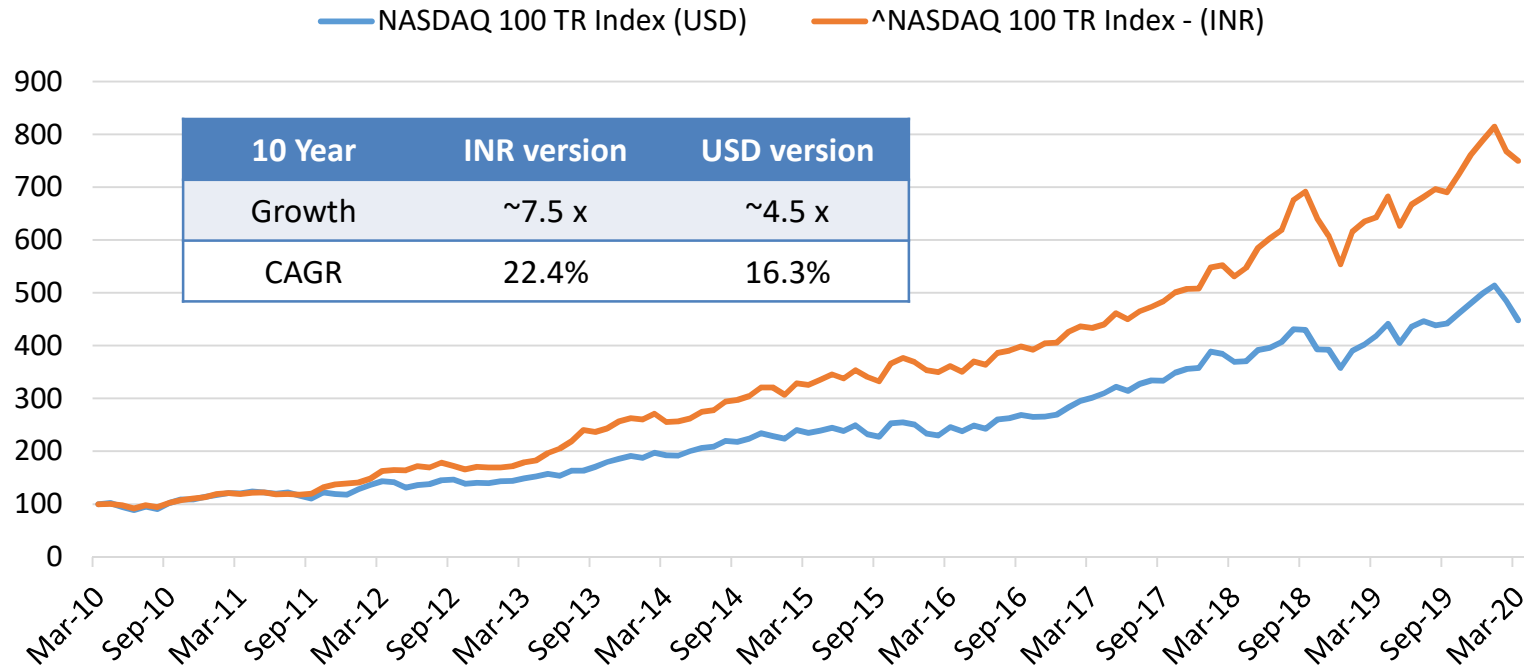
- No single strategy can provide consistent positive returns over all periods. Diversification is always considered a key investment strategy for long term investments.
- Diversification could be achieved by including assets that are not perfectly correlated to each other.

Data Source: Bloomberg, RBI, Thomson Reuters. Correlation of daily total returns as of Close of Mar 31, 2005 to Mar 31, 2020. ^ denotes the index currency conversion. Performance results have many inherent limitations and no representation is being made that any investor will, or is likely to achieve. Past performance may or may not be sustained in future.

Returns in INR are higher than USD



Currency Conversion



- The NASDAQ 100 Index in INR grew 7.5 times over last 10 years; where as the underlying index NASDAQ 100 TRI in USD terms grew 4.5 times during the same period.
- The excess returns can be attributed primarily on account of depreciation of INR against USD.

Data Source: Bloomberg, FBIL/RBI/Thomson Reuter and MOFSL; Performance as of Close of March 31, 2010 – March 31, 2020; ^ denotes the index currency conversion. Performance results have many inherent limitations and no representation is being made that any investor will, or is likely to achieve. Past performance may or may not be sustained in future. The above graph is used to explain the concept and is for illustration purpose only and should not used for development or implementation of an investment strategy. Past performance may or may not be sustained in future.

Increasing Profitability



All figures in %

	MAR '20	DEC '19	DEC '18	DEC '17	DEC '16	DEC '15	DEC '14	DEC '13	DEC '12	DEC '11	DEC '10
Gross Margin	43.6	43.3	43.7	43.1	43.0	43.1	42.7	41.9	43.3	43.7	44.3
Operating Margin	17.3	17.4	18.7	18.2	17.9	18.6	18.0	17.5	19.1	19.5	19.3
Net Margin	14.2	14.2	14.1	14.1	13.3	14.2	12.9	13.0	13.9	14.1	14.5
EBIT Margin	17.4	17.4	18.7	18.3	17.9	18.6	18.0	17.5	19.1	19.5	19.3
EBITDA Margin	24.4	24.6	25.4	25.3	24.7	24.8	24.5	23.9	25.0	24.9	24.8
Return on Assets	8.9	9.1	9.2	8.2	7.7	9.1	8.8	8.8	9.7	10.2	10.1
Return on Equity	23.9	24.2	23.9	20.7	19.3	21.9	20.1	19.3	20.6	21.8	21.5
Return on Invested Capital	14.4	14.5	14.3	12.3	11.6	13.7	13.5	13.3	14.9	15.7	15.5
Free Cash Flow Margin	15.1	14.8	15.3	15.1	15.3	15.1	14.2	13.7	15.2	15.0	15.5

- Over past 10 years NASDAQ 100 has maintained higher profitability ratios
- **Covid 19 Impact** – March 2020 numbers don't show expected drag on profitability ratios. This may be due to analyst still assessing the impact or limited ability to analyze the impact due to lockdown. We may expect the to see real picture of impact after analyzing reported financials.

Data Source: FactSet; Data from Dec 2010 – Mar 2020; *Performance results have many inherent limitations and no representation is being made that any investor will, or is likely to achieve. Past performance may or may not be sustained in future.

Improving Valuation Multiples



	MAR '20	DEC '19	DEC '18	DEC '17	DEC '16	DEC '15	DEC '14	DEC '13	DEC '12	DEC '11	DEC '10
Price/Earnings	24.4	27.7	22.0	26.0	23.4	21.7	23.7	22.1	16.4	15.4	17.1
Price/Earnings (excl negatives)	23.6	26.7	20.7	25.0	21.6	19.9	21.2	21.0	15.7	15.0	16.5
Price/Sales	3.5	3.9	3.1	3.7	3.1	3.1	3.0	2.9	2.3	2.2	2.5
Price/Book Value	5.8	6.7	5.3	5.4	4.5	4.7	4.8	4.3	3.4	3.4	3.7
Price/Cash Flow	15.3	17.6	13.4	16.3	13.7	13.8	14.4	13.9	10.7	10.3	12.1
Price/Cash Flow (excl negatives)	14.9	17.2	13.1	15.8	13.5	13.4	14.2	13.7	10.5	10.1	12.0
Price/Free Cash Flow	22.8	26.7	20.2	24.3	20.3	20.3	21.4	20.9	15.0	14.4	16.1
Enterprise Value/EBIT	20.7	23.4	17.2	20.8	18.1	17.0	17.0	16.3	11.8	11.0	12.6
Enterprise Value/EBITDA	14.7	16.6	12.7	15.0	13.1	12.7	12.5	11.9	9.0	8.6	9.8
Enterprise Value/Sales	3.6	4.1	3.2	3.8	3.2	3.2	3.1	2.9	2.3	2.1	2.4

- Despite NASDAQ 100 Index frequently achieving new all time highs over last 10 years, the valuation multiples appears to be close to historical levels.
- **Covid 19 Impact** – The March 2020 quarter numbers show some correction in valuation multiples due to sharp fall in index

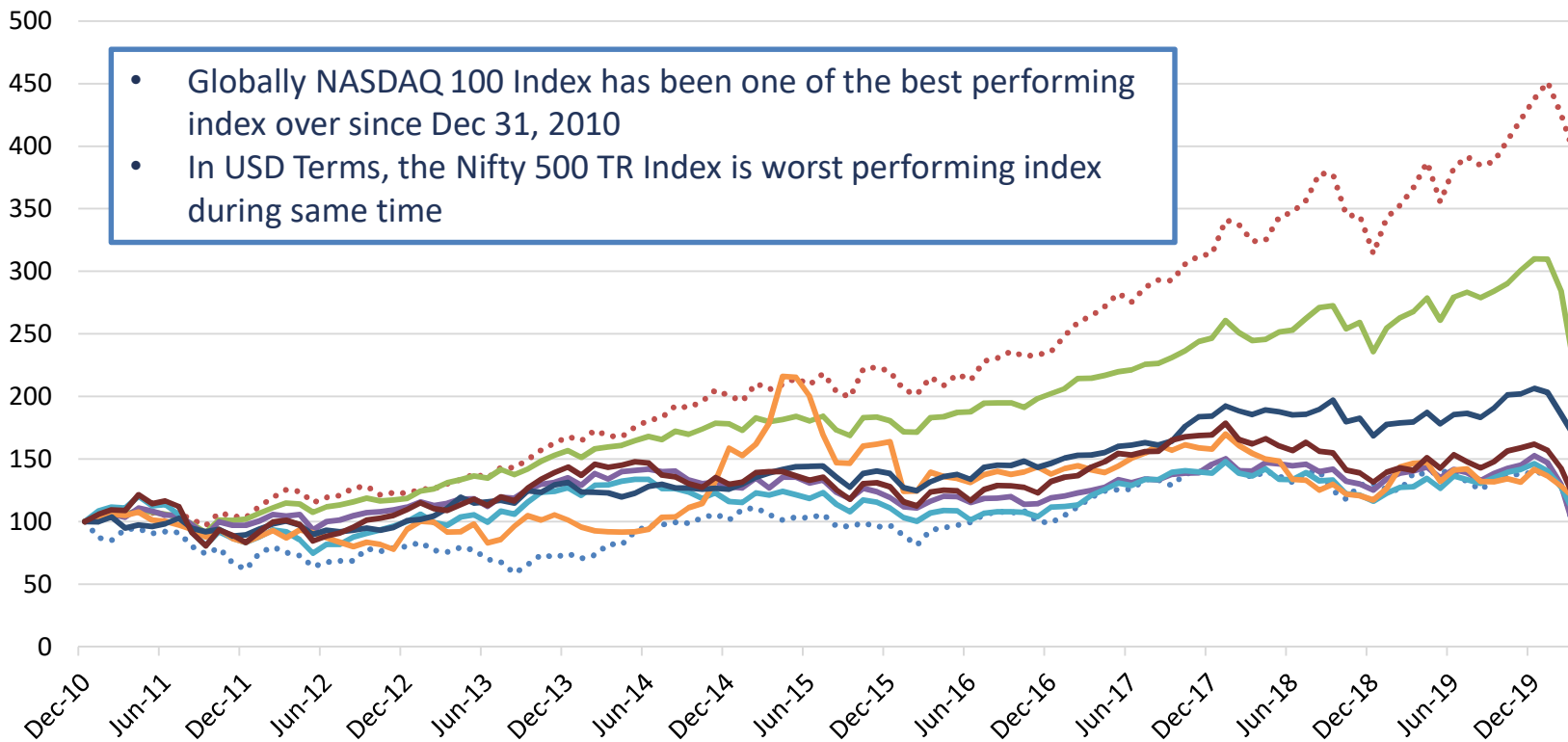
Data Source: Bloomberg; Data from Dec 2010 – Mar 2020; Performance results have many inherent limitations and no representation is being made that any investor will, or is likely to achieve. Past performance may or may not be sustained in future.

Performance: NASDAQ 100 Index

International Indices: Historical Performance



- ^Nifty 500 TRI - (USD)
- NASDAQ 100 TR Index (USD)
- S&P 500 TR Index (USD)
- ^FTSE 100 TR Index (USD)
- ^Euro Stoxx 50 TR Index (USD)
- ^Shanghai TR Index (USD)
- ^Nikkei 225 TR Index (USD)
- ^DAX TR Index (USD)



Data Source: Bloomberg; Performance in USD as of Close of December 31, 2010 – Mar 31, 2020; ^ denotes currency converted to USD. Month end index values. Performance results have many inherent limitations and no representation is being made that any investor will, or is likely to achieve. Past performance may or may not be sustained in future. The above graph is used to explain the concept and is for illustration purpose only and should not be used for development or implementation of an investment strategy. Past performance may or may not be sustained in future.

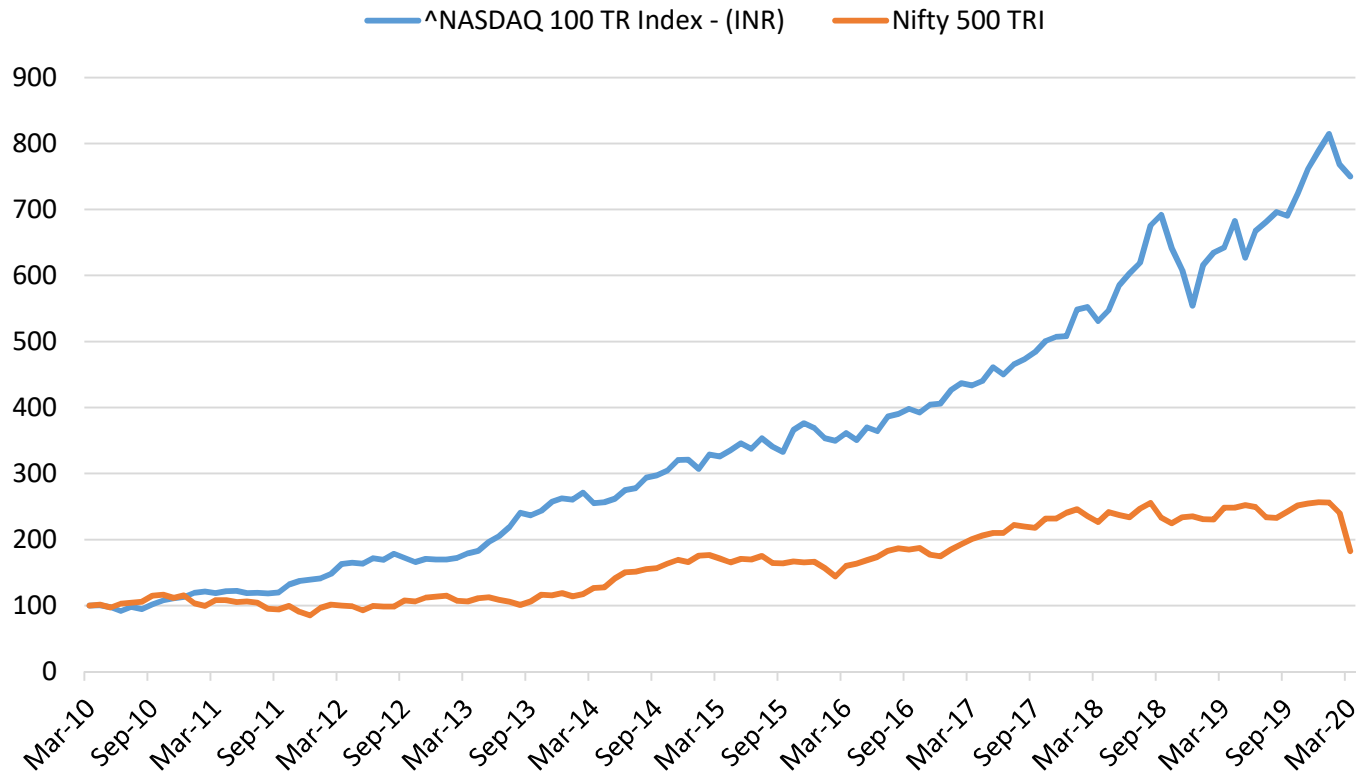
International Indices: Risk Returns Profile



	Period	^Nifty 500 TRI - (USD)	NASDAQ 100 TR Index (USD)	^FTSE 100 TR Index (USD)	^Euro Stoxx 50 TR Index (USD)	^Shanghai TR Index (USD)	^Nikkei 225 TR Index (USD)	^DAX TR Index (USD)
Annualized Returns	1 year	-32.7%	7.0%	-32.8%	-16.6%	-18.7%	-6.2%	-15.7%
	3 year	-7.9%	14.1%	-8.9%	-4.1%	-5.6%	3.2%	-6.1%
	5 year	-2.4%	13.8%	-5.8%	-2.5%	-7.8%	3.9%	-3.2%
	7 year	3.0%	17.1%	-2.7%	1.3%	3.8%	6.2%	1.2%
	10 year	0.9%	16.2%	Data NA	0.3%	-0.4%	6.0%	2.7%
	15 year	7.0%	12.8%	Data NA	1.2%	Data NA	5.1%	4.5%
	20 year	7.4%	3.7%	Data NA	0.2%	Data NA	Data NA	2.0%
Annualized Volatility	1 year	28.9%	17.7%	30.8%	22.8%	18.5%	16.6%	23.8%
	3 year	23.0%	16.0%	21.0%	17.5%	18.2%	13.9%	17.8%
	5 year	21.6%	15.5%	18.4%	16.8%	23.7%	13.8%	17.8%
	7 year	22.2%	14.3%	17.1%	16.6%	25.0%	13.2%	17.0%
	10 year	23.8%	15.0%	Data NA	20.2%	24.6%	13.8%	20.3%
	15 year	29.5%	17.1%	Data NA	21.4%	Data NA	15.6%	22.1%
	20 year	29.8%	23.2%	Data NA	21.4%	Data NA	Data NA	23.4%

Data Source: Bloomberg; Performance in USD as of Close of Mar 31, 2000 – Mar 31, 2020; ^ denotes currency converted to USD. Annualised Volatility calculated using monthly returns. Performance results have many inherent limitations and no representation is being made that any investor will, or is likely to achieve. Past performance may or may not be sustained in future. The above graph is used to explain the concept and is for illustration purpose only and should not used for development or implementation of an investment strategy. Past performance may or may not be sustained in future.

Historical Performance



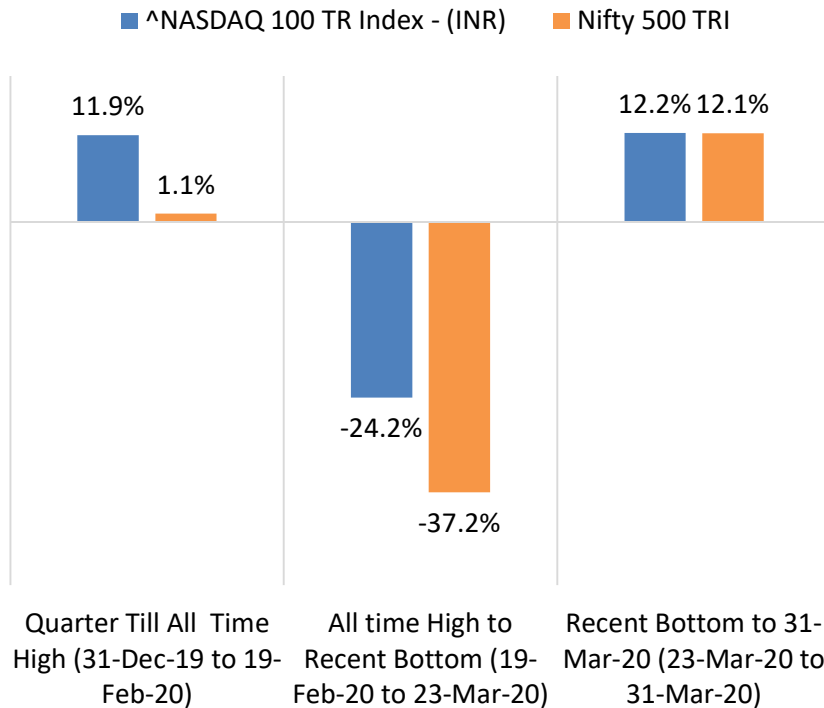
NASDAQ 100 TR Index in INR has outperformed Nifty 50 TR Index with significantly higher margin during last 10 year

Data Source: Bloomberg, FBIL/RBI/Thomson Reuter and MOFSL; Performance as of Close of March 31, 2010 – March 31, 2020; ^ denotes the index currency conversion. Monthly index values. Performance results have many inherent limitations and no representation is being made that any investor will, or is likely to achieve. Past performance may or may not be sustained in future. The above graph is used to explain the concept and is for illustration purpose only and should not used for development or implementation of an investment strategy. Past performance may or may not be sustained in future.

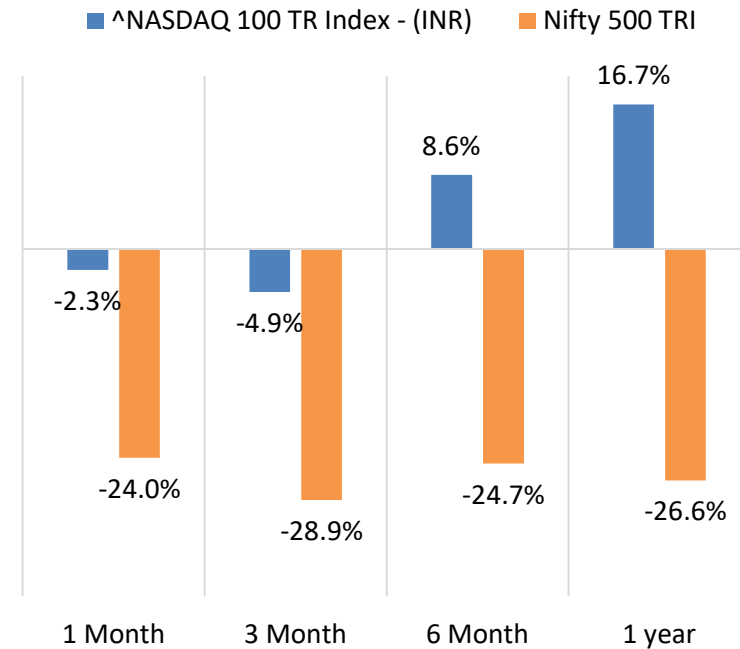
Recent Performance: Absolute Returns



Peak and Bottom analysis



Recent Performance



NASDAQ 100 index being technology heavy experienced smaller impact due to Covid 19 as compared to Nifty 500 Index

Data Source: Bloomberg, FBIL/RBI/Thomson Reuter and MOFSL; Performance as of Close of December 31, 2019 – March 31, 2020; ^ denotes the index currency conversion. Performance results have many inherent limitations and no representation is being made that any investor will, or is likely to achieve. Past performance may or may not be sustained in future. The above graph is used to explain the concept and is for illustration purpose only and should not used for development or implementation of an investment strategy. Past performance may or may not be sustained in future.

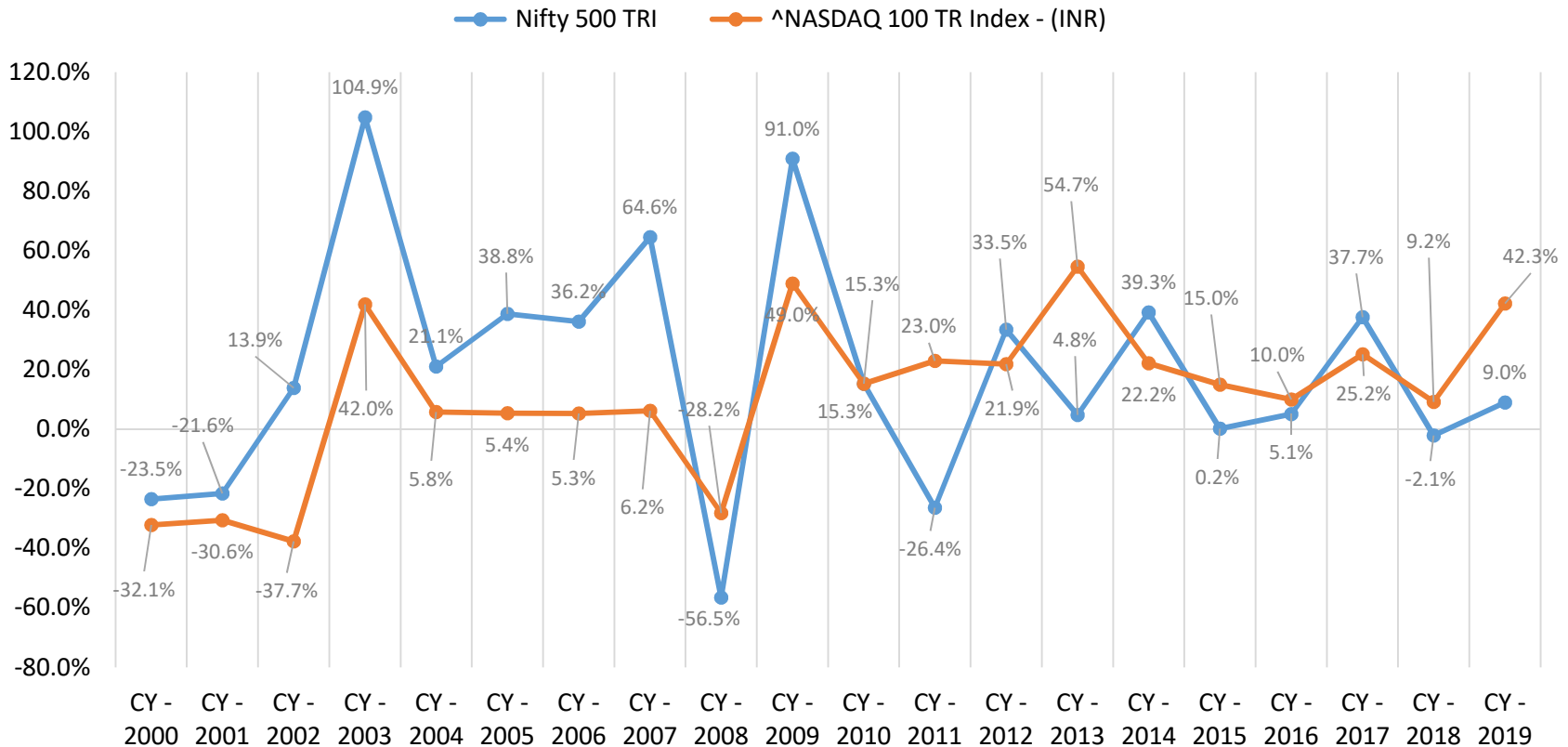
Risk Return Profile



	3 year	5 year	7 year	10 year	15 year	20 year
Annualised Returns						
^NASDAQ 100 TR Index - (INR)	20.0%	18.2%	22.7%	22.3%	17.0%	6.6%
Nifty 500 TRI	-3.1%	1.3%	8.0%	6.2%	11.0%	10.4%
Annualised Volatility						
^NASDAQ 100 TR Index - (INR)	24.4%	21.6%	20.2%	20.3%	22.3%	28.3%
Nifty 500 TRI	17.7%	16.5%	16.2%	16.3%	21.7%	23.0%
Risk Adjusted Returns						
^NASDAQ 100 TR Index - (INR)	0.821	0.839	1.127	1.102	0.762	0.232
Nifty 500 TRI	-0.177	0.078	0.493	0.381	0.505	0.452

Data Source: Bloomberg, FBIL/RBI/Thomson Reuter and MOFSL; Performance as of Close of March 31, 2000 – March 31, 2020; ^ denotes the index currency conversion. Performance results have many inherent limitations and no representation is being made that any investor will, or is likely to achieve. Past performance may or may not be sustained in future. The above graph is used to explain the concept and is for illustration purpose only and should not be used for development or implementation of an investment strategy. Past performance may or may not be sustained in future.

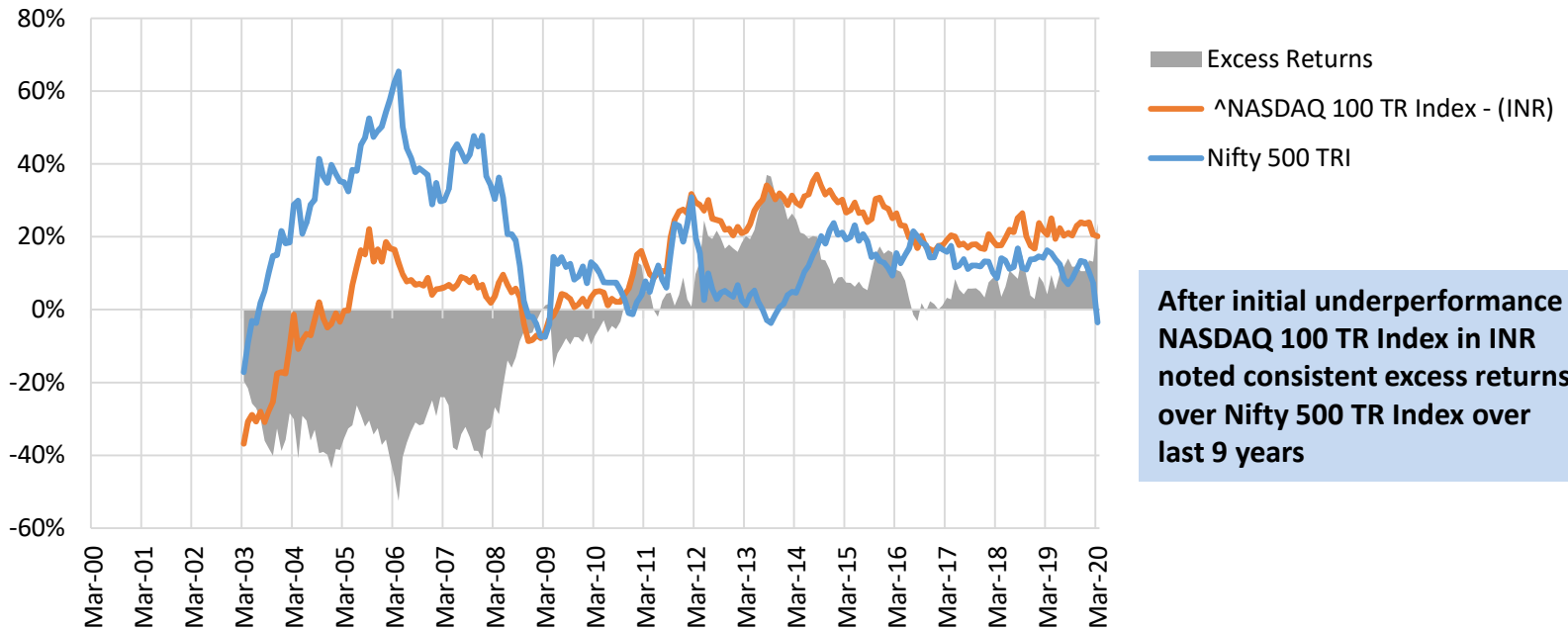
Calendar Year Returns



Post the 2008 Financial Crisis, NASDAQ 100 TR Index in INR managed to outperform Nifty 500 TR Index more frequently.

Data Source: RBI, Bloomberg and niftyindices.com; ~ Denotes Values converted in INR using RBI forex rates, Performance data in INR. Performance Data from Dec 31, 1999 – December 31, 2019; Hypothetical performance results have many inherent limitations and no representation is being made that any investor will, or is likely to achieve, performance similar to that shown.

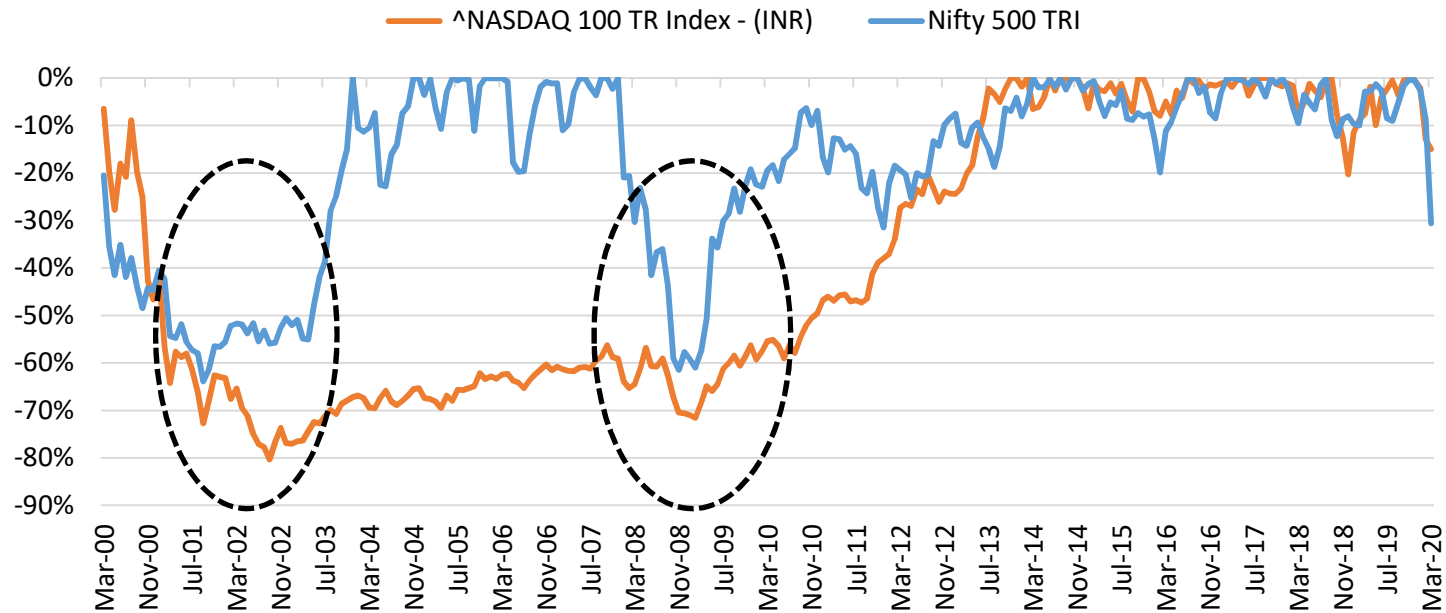
3 Year Rolling CAGR



3 Year Rolling Returns	~NASDAQ 100 TRI (INR)	Nifty 50 TRI
Average	16.5%	10.7%
Median	13.2%	15.1%
Min	-21.4%	-38.7%
Max	67.6%	39.5%

Data Source: Bloomberg, FBIL/RBI/Thomson Reuter and MOFSL; 250 trading days in a year assumed to calculate rolling returns. Chart using monthly 3 year rolling returns. Performance as of Close of March 31, 2000 – March 31, 2020; ^ denotes the index currency conversion. Performance results have many inherent limitations and no representation is being made that any investor will, or is likely to achieve. Past performance may or may not be sustained in future. The above graph is used to explain the concept and is for illustration purpose only and should not used for development or implementation of an investment strategy. Past performance may or may not be sustained in future.

Indian Indices: Drawdown Analysis



	Nifty 50 TRI	~NASDAQ 100 TRI (INR)
Maximum Drawdown during IT Crash	-66%	-81%
Drawdown Date	21-Sep-01	07-Oct-02
Maximum Drawdown During Financial Crisis	-64%	-74%
Drawdown Date	09-Mar-09	20-Nov-08

Data Source: RBI, Bloomberg and niftyindices.com; ^Denotes Values converted in INR using RBI forex rates, Month-end Drawdown Chart. Performance Data from Mar 31, 2000 – Mar 31, 2020. Hypothetical performance results have many inherent limitations and no representation is being made that any investor will, or is likely to achieve, performance similar to that shown. The above graph is used to explain the concept and is for illustration purpose only and should not used for development or implementation of an investment strategy. Past performance may or may not be sustained in future.

Nasdaq 100 in your portfolio

Historical performance

Hypothetical Portfolio Allocations



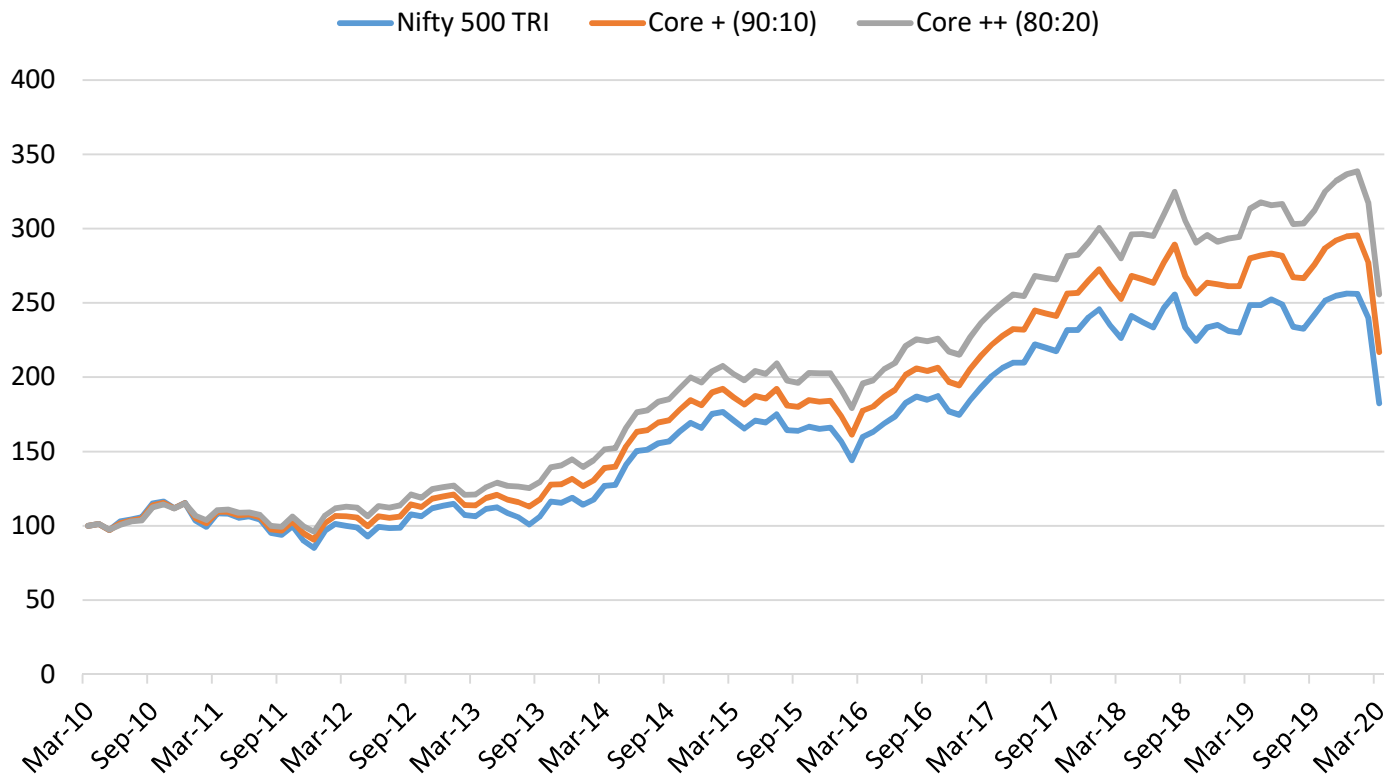
Hypothetical Allocations to International Equity -

#	Portfolio Name	Nifty 50 TRI	^NASDAQ 100 TRI (INR)
1.	Core Equity	100%	0
2.	Core Equity+ (90:10)	90%	10%
3.	Core Equity++ (80:20)	80%	20%

Correlation (15 Year)	^NASDAQ 100 TRI (INR)
Nifty 500 TRI (INR)	0.1543

Data Source: Bloomberg, RBI, Thomson Reuters. Correlation of daily total returns as of Close of Mar 31, 2005 to Mar 31, 2020. ^ denotes the index currency conversion. Performance results have many inherent limitations and no representation is being made that any investor will, or is likely to achieve. Past performance may or may not be sustained in future. The above table is used to explain the concept and is for illustration purpose only and should not used for development or implementation of an investment strategy. Past performance may or may not be sustained in future.

NASDAQ 100 Allocation - Performance



Small allocation to NASDAQ 100 TR Index in INR has helped improve portfolio performance during last 10 years

Data Source: Bloomberg, FBIL/RBI/Thomson Reuter and MOFSL; Performance as of Close of March 31, 2010 – March 31, 2020; Performance results have many inherent limitations and no representation is being made that any investor will, or is likely to achieve. Past performance may or may not be sustained in future. The above graph is used to explain the concept and is for illustration purpose only and should not used for development or implementation of an investment strategy. Past performance may or may not be sustained in future.

Asset Allocation - Risk-Return Profile

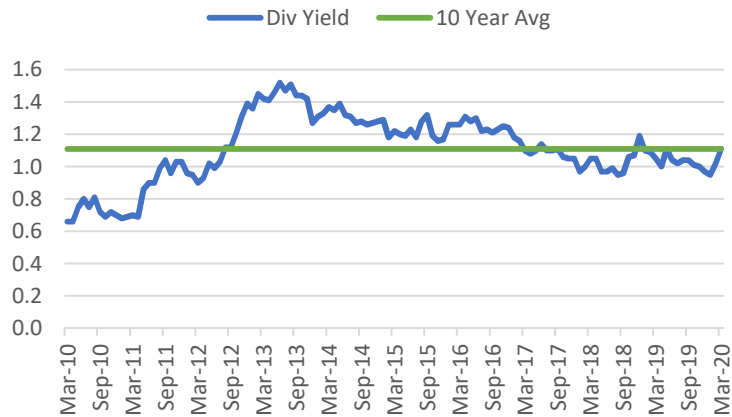
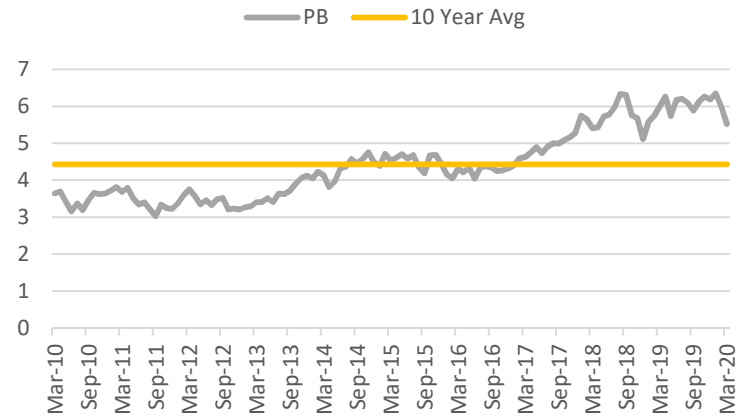
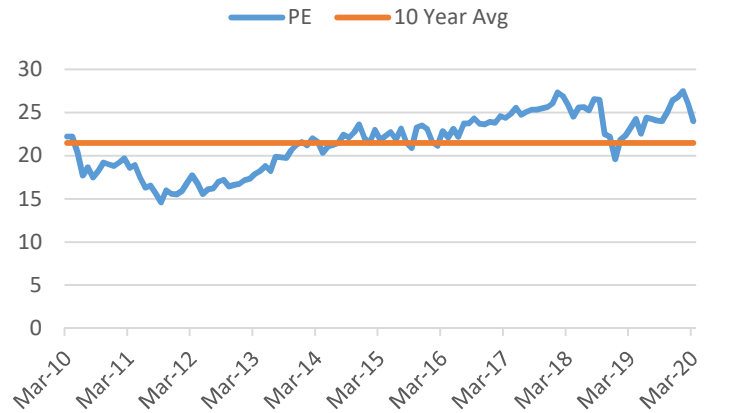


	Data Label	Nifty 500 TRI	Core + (90:10)	Core ++ (80:20)
Annualised Returns	3 year	-3.1%	-0.8%	1.6%
	5 year	1.3%	3.1%	4.8%
	7 year	8.0%	9.7%	11.3%
	10 year	6.2%	8.0%	9.8%
	15 year	11.0%	12.0%	12.9%
	20 year	10.4%	6.6%	7.7%
Annualised Volatility	3 year	17.7%	16.5%	15.8%
	5 year	16.5%	15.4%	14.7%
	7 year	16.2%	15.0%	14.2%
	10 year	16.3%	15.0%	14.2%
	15 year	21.7%	19.9%	18.5%
	20 year	23.0%	28.3%	20.3%
Risk Adjusted Returns	3 year	-0.177	-0.046	0.101
	5 year	0.078	0.198	0.326
	7 year	0.493	0.643	0.791
	10 year	0.381	0.535	0.692
	15 year	0.505	0.604	0.700
	20 year	0.452	0.232	0.381

Data Source: Bloomberg, FBIL/RBI/Thomson Reuter and MOFSL; Performance as of Close of March 31, 2000 – March 31, 2020; Performance results have many inherent limitations and no representation is being made that any investor will, or is likely to achieve. Past performance may or may not be sustained in future. The above graph is used to explain the concept and is for illustration purpose only and should not used for development or implementation of an investment strategy. Past performance may or may not be sustained in future.

Why Now?

Price to Earning Ratio Below Long Term Average



PE, PB and Dividend Yield ratios has corrected from its all time highs; although they are still above 10 year average numbers

Data Source: Bloomberg; Data from Mar 31, 2010 to Mar 31, 2020; Performance results have many inherent limitations and no representation is being made that any investor will, or is likely to achieve, performance similar to that shown in future.

Passive Funds

by

Motilal Oswal AMC

Motilal Oswal NASDAQ 100 ETF



Investment Objective.

The Scheme seeks investment return that corresponds (before fees and expenses) generally to the performance of the NASDAQ100 Index, subject to tracking error. However, there can be no assurance or guarantee that the investment objective of the Scheme would be achieved.

Key Facts:

- **Benchmark** – NASDAQ 100 TR Index
- **Fund Manager** – Mr. Herin Visaria
- **Date of Inception/Allotment** – 29-March-2011
- **Total Expense Ratio** – 0.54%
- **Asset Under Management** – INR 557.3 Crores (March 31, 2020)
- **Portfolio Turnover Ratio** – 0.10
- ***Tracking Error** – 0.20 (annualized)

Tickers/Symbols:

NSE/BSE Symbol – N100
AMFI Code – 114984 (ETF),
Bloomberg – MOSTNDX
ISIN Code – INF247L01031

Continuous Offer:

On NSE / BSE: Investors can buy/sell units of the Scheme in round lot of 1 unit and in multiples thereof.

Directly with the Mutual Fund:

Investors can buy/sell units of the Scheme only in creation unit size i.e. 25,000 units and in multiples thereafter.

This is not an index fund; it is Exchange Traded Fund (ETF)

Source: <https://www.motilaloswalmf.com/Pdf/Products/equity/6852399961126100817MF-Factsheet-Jan-2020.pdf>;

* Tracking Error against NASDAQ 100 Index (in INR using Thomson Reuter Forex Rate)

Performance: Motilal Oswal NASDAQ 100 ETF



Performance (As on 31-March-2020)

	1 Year		3 Year		5 Year		7 Year		Since Inception	
	CAGR (%)	Current Value of Investment of ₹ 10,000	CAGR (%)	Current Value of Investment of ₹ 10,000	CAGR (%)	Current Value of Investment of ₹ 10,000	CAGR (%)	Current Value of Investment of ₹ 10,000	CAGR (%)	Current Value of Investment of ₹ 10,000
Scheme	17.9	11,791	18.6	16,676	16.3	21,290	21.1	38,260	21.2	56,448
NASDAQ 100 (INR) TRI (Benchmark)	18.8	11,877	20.4	17,447	18.1	22,994	22.9	42,453	22.9	64,346
Nifty 50 TRI (Additional Benchmark)	-25.0	7,498	-0.8	9,757	1.6	10,807	7.5	16,548	5.9	16,800
NAV Per Unit (582.7451: as on 31-Mar-2020)		494.2227		349.4604		273.7202		152.3124		103.2365

Date of inception: 29-Mar-11. • In case, the start/end date of the concerned period is non business date (NBD), the NAV of the previous date is considered for computation of returns. The NAV per unit shown in the table is as on the start date of the said period. Past performance may or may not be sustained in the future. Performance is for Growth option. • This scheme is currently managed by Mr. Herin Visaria. He has been managing this fund since 26-July-2019. The performances of the schemes managed by him are on page no. 5.

This is not an index fund; it is Exchange Traded Fund (ETF)

Motilal Oswal NASDAQ 100 Fund of Funds



Investment Objective.

The investment objective of the scheme is to seek returns by investing in units of Motilal Oswal Nasdaq 100 ETF. However, there can be no assurance or guarantee that the investment objective of the scheme would be achieved.

Key Facts:

- **Benchmark** – NASDAQ 100 TRI
- **Fund Manager** – Mr. Swapnil Mayekar and for Debt component - Mr. Abhiroop Mukherjee
- **Date of Inception/Allotment** – 28-November-2018
- **Total Expense Ratio** Regular – 0.50%
- **Asset Under Management** – INR 298.5 Crores (Mar 31, 2020)

AMFI Code –

- **Direct** - 145552
- **Regular** – 145551

Entry/Exit Load – Nil

Category – Domestic Fund of Fund

Continuous Offer:

Minimum Application Amount : INR 500/- and in multiples of INR 1/- thereafter.

Additional Application Amount : INR 500/- and in multiples of INR 1/- thereafter.

Note - Investors are requested to note that they will be bearing the recurring expenses of the fund of funds (FoF) scheme, in addition to the expenses of underlying scheme in which the fund of funds scheme makes investments

This is not an index fund; it is fund of fund (FoF) that invests in underlying ETF

Source: <https://www.motilaloswalmf.com/Pdf/Products/equity/6852399961126100817MF-Factsheet-Jan-2020.pdf>; ^ AMFI India

* Tracking Error against NASDAQ 100 Index (in INR using Thomson Reuter Forex Rate)

Performance: Motilal Oswal NASDAQ 100 Fund of Funds



Performance (As on 31-March-2020)

	1 Year		Since Inception	
	CAGR (%)	Current Value of Investment of ₹ 10,000	CAGR (%)	Current Value of Investment of ₹ 10,000
Scheme	18.6	11,859	19.8	12,727
NASDAQ 100 Index	18.8	11,877	17.4	12,392
Nifty 50 TRI	-25.0	7,498	-15.0	8,052
NAV (₹) Per Unit (12.7271; as on 31-Mar-2020)		10.7324		10.0000

Date of inception: 29-Nov-2018. ● In case, the start/end date of the concerned period is non business date (NBD), the NAV of the previous date is considered for computation of returns. ● The NAV per unit shown in the table is as on the start date of the said period. ● Past performance may or may not be sustained in the future. ● Performance is for Regular Plan Growth option. ● Different plans have different expense structure. ● Mr. Swapnil Mayekar Mukherjee is the Fund Manager since inception. ● The scheme has been in existence for less than 5 years.

This is not an index fund; it is fund of fund (FoF) that invests in underlying ETF

Passive Fund Solutions at Motilal Oswal AMC



ETF's	Motilal Oswal M50 ETF
	Motilal Oswal Midcap 100 ETF
	Motilal Oswal Nasdaq 100 ETF
INDEX FUNDS	Motilal Oswal Nifty 50 Index Fund
	Motilal Oswal Next Nifty 50 Index Fund
	Motilal Oswal Nifty 500 Index Fund
	Motilal Oswal Nifty Midcap 150 Index Fund
	Motilal Oswal Nifty Smallcap 250 Index Fund
	Motilal Oswal Nifty Bank Index Fund
	Motilal Oswal S&P 500 Index Fund*
Fund of Funds	Motilal Oswal Nasdaq 100 FoF

For more information please log in to www.motilaloswalmf.com ; * New Fund Offer from 15th April – 23rd April 2020

Key Takeaway



Key factors to be considered for ideal asset allocation:

1. NASDAQ 100 Index **includes top 100 non-financial companies** in the index. Historically, **majority of index weight was noted by global technology brands**. The index doesn't include financial companies.
2. **Motilal Oswal NASDAQ 100 ETF and FoF** offers investors an opportunity to invest in global technology companies that are part of NASDAQ 100 Index. It aims to earn index returns subject to tracking error. **Motilal Oswal NASDAQ 100 FoF** can be useful for investor with no d-mat account.
3. Historically, NASDAQ 100 Index had **relatively lower correlation** with Indian equity indices, thereby offering **diversification opportunity**.
4. Historically **Motilal Oswal NASDAQ 100 ETF (or FoF) noted significantly higher returns over NASDAQ 100 TR Index (in USD)**, due to INR depreciation
5. Due to sharp correction in the index, current **valuation multiple are more attractive** as compared couple of months before.

This is not an index fund, it is ETF and Fund of Fund (FoF)

Fund Manager Performance



Motilal Oswal M50 ETF

Performance (As on 31-March-2020)

Scheme	1 Year		3 Year		5 Year		7 Year		Since Inception	
	CAGR (%)	Current Value of Investment of ₹ 10,000	CAGR (%)	Current Value of Investment of ₹ 10,000	CAGR (%)	Current Value of Investment of ₹ 10,000	CAGR (%)	Current Value of Investment of ₹ 10,000	CAGR (%)	Current Value of Investment of ₹ 10,000
Scheme	-25.4	7,463	-0.02	9,541	0.7	12,884	7.0	16,087	4.6	15,396
Nifty 50 TRI (Benchmark)	-25.0	7,498	-0.01	9,757	1.6	13,415	7.5	16,548	6.2	17,937
BSE Sensex TRI (Additional Benchmark)	-22.9	7,714	0.01	10,326	2.4	13,925	12.2	22,353	9.7	24,351
NAV Per Unit (84.0921: as on 31-March-2020)		112.6798		88.1395		81.1797		52.2734		54.6210

Date of inception: 28-Jul-10. • In case, the start/end date of the concerned period is non business date (NBD), the NAV of the previous date is considered for computation of returns. The NAV per unit shown in the table is as on the start date of the said period. Past performance may or may not be sustained in the future. Performance is for Growth option. • This scheme is currently managed by Mr. Swapnil Mayekar. He has been managing this fund since 26-July-2019. The performances of the schemes managed by him are on page no.8.

Motilal Oswal Midcap 100 ETF

Performance (As on 31-March-2020)

Scheme	1 Year		3 Year		5 Year		7 Year		Since Inception	
	CAGR (%)	Current Value of Investment of ₹ 10,000	CAGR (%)	Current Value of Investment of ₹ 10,000	CAGR (%)	Current Value of Investment of ₹ 10,000	CAGR (%)	Current Value of Investment of ₹ 10,000	CAGR (%)	Current Value of Investment of ₹ 10,000
Scheme	-34.7	6,532	-11.6	6,901	-1.8	9,126	7.2	16,306	5.0	15,576
Nifty Midcap 100 TRI (Benchmark)	-35.1	6,494	-11.1	7,026	-1.0	9,533	8.1	17,205	5.7	16,592
Nifty 50 (Additional Benchmark)	-25.0	7,498	-0.8	9,757	1.6	10,807	7.5	16,548	6.3	17,517
NAV Per Unit (12.3399: as on 31-Mar-2020)		18.8907		17.8818		13.5217		7.5678		7.9225

Date of inception: 31-Jan-11. • In case, the start/end date of the concerned period is non business date (NBD), the NAV of the previous date is considered for computation of returns. The NAV per unit shown in the table is as on the start date of the said period. Past performance may or may not be sustained in the future. Performance is for Growth option. • This scheme is currently managed by Mr. Swapnil Mayekar. He has been managing this fund since 26-July-2019. The performances of the schemes managed by him are on page no.7.








In addition to Motilal Oswal M50 ETF, Motilal Oswal Midcap 100 ETF, Motilal Oswal NASDAQ 100 FoF, Swapnil Mayekar also manages below given schemes; however their performance is not shown as they haven't completed one year since allotment.

Additional Schemes Managed by Swapnil Mayekar -

- Motilal Oswal Nifty Midcap 150 Index Fund,
- Motilal Oswal Nifty Smallcap 250 Index Fund,
- Motilal Oswal Nifty Bank Index Fund,
- Motilal Oswal Nifty 500 Fund,
- Motilal Oswal Nifty 50 Index Fund,
- Motilal Oswal Nifty Next 50 Fund

This is not an index fund; it is Exchange Traded Fund (ETF)

Product Suitability

Motilal Oswal M50 ETF (MOFM50)	<ul style="list-style-type: none"> Return that corresponds generally to the performance of the Nifty 50 Index (Underlying Index), subject to tracking error Investment in equity securities of Nifty 50 Index 	 <p>Investors understand that their principal will be at Moderately High risk</p>
Motilal Oswal Midcap 100 ETF (MOFM100)	<ul style="list-style-type: none"> Return that corresponds generally to the performance of the Nifty Midcap 100 Index, subject to tracking error Investment in equity securities of Nifty Midcap 100 Index 	 <p>Investors understand that their principal will be at Moderately High risk</p>
Motilal Oswal Nasdaq 100 ETF (MOFN100)	<ul style="list-style-type: none"> Return that corresponds generally to the performance of the Nasdaq-100 Index, subject to tracking error Investment in equity securities of NASDAQ-100 Index 	 <p>Investors understand that their principal will be at Moderately High risk</p>
Motilal Oswal Nasdaq 100 Fund of Fund (MOFN100FOF)	<ul style="list-style-type: none"> Long term capital appreciation Return that corresponds generally to the performance of the Scheme, Motilal Oswal Nasdaq 100 ETF (MOFN100) through investment in units of MOFN100 	 <p>Investors understand that their principal will be at Moderately High risk</p>
Motilal Oswal Nifty 500 Fund (MOFNIFTY500)	<ul style="list-style-type: none"> Return that corresponds to the performance of Nifty 500 Index subject to tracking error Equity and equity related securities covered by Nifty 500 Index Long term capital growth 	 <p>Investors understand that their principal will be at Moderately High risk</p>
Motilal Oswal Nifty Midcap 150 Fund (MOFMIDCAP)	<ul style="list-style-type: none"> Return that corresponds to the performance of Nifty Midcap 150 Index subject to tracking error Equity and equity related securities covered by Nifty Midcap 150 Index Long term capital growth 	 <p>Investors understand that their principal will be at Moderately High risk</p>
Motilal Oswal Nifty Smallcap 250 Index Fund (MOFSMALLCAP)	<ul style="list-style-type: none"> Return that corresponds to the performance of Nifty Smallcap 250 Index subject to tracking error Equity and equity related securities covered by Nifty Smallcap 250 Index Long term capital growth 	 <p>Investors understand that their principal will be at Moderately High risk</p>
Motilal Oswal Nifty 50 Index Fund (MOFNIFTY50)	<ul style="list-style-type: none"> Return that corresponds to the performance of Nifty 50 Index subject to tracking error Equity and equity related securities covered by Nifty 50 Index Long term capital growth 	<p>Investors understand that their principal will be at Moderately High risk</p>
Motilal Oswal Nifty Next 50 Index Fund (MOFNEXT50)	<ul style="list-style-type: none"> Return that corresponds to the performance of Nifty Next 50 Index subject to tracking error Equity and equity related securities covered by Nifty Next 50 Index Long term capital growth 	<p>Investors understand that their principal will be at Moderately High risk</p>
Motilal Oswal Nifty Bank Fund (MOFNIFTYBANK)	<ul style="list-style-type: none"> Return that corresponds to the performance of Nifty Bank Index subject to tracking error Equity and equity related securities covered by Nifty Bank Index Long term capital growth 	<p>Investors understand that their principal will be at High risk</p>

*Investors should consult their financial advisors if in doubt about whether the product is suitable for them.

Disclaimers & Risk Factors



This presentation has been prepared and issued on the basis of internal data, publicly available information and other sources believed to be reliable. The information contained in this document is for general purposes only and not a complete disclosure of every material fact and terms and conditions. The information / data herein alone is not sufficient and shouldn't be used for the development or implementation of an investment strategy. It should not be construed as investment advice to any party.

All opinions, figures, charts/graphs, estimates and data included in this presentation are as on date and are subject to change without notice. The statements contained herein may include statements of future expectations and other forward-looking statements that are based on our current views and assumptions and involve known and unknown risks and uncertainties that could cause actual results, performance or events to differ materially from those expressed or implied in such statements. Readers shall be fully responsible / liable for any decision taken on the basis of this presentation. Investments in Securities are subject to market and other risks and there is no assurance or guarantee that the objectives of any of the Schemes will be achieved. The scheme may not be suited to all categories of investors.

The material is based upon information that we consider reliable, but we do not represent that it is accurate or complete, and it should not be relied upon as such. Opinions, if any, expressed are our opinions as of the date of appearing on this material only. While we endeavor to update on a reasonable basis the information discussed in this material, there may be regulatory, compliance, or other reasons that prevent us from doing so. Recipient shall understand that the aforementioned statements cannot disclose all the risks and characteristics. The recipient is requested to take into consideration all the risk factors including their financial condition, suitability to risk return, etc. and take professional advice before investing.

Passive Investments - The Scheme is not actively managed. Since the Scheme is linked to index, it may be affected by a general decline in the Indian markets relating to its underlying index. The Scheme as per its investment objective invests in Securities which are constituents of its underlying index regardless of their investment merit. The AMC does not attempt to individually select stocks or to take defensive positions in declining markets.

Mutual Fund Investments are subject to market risks, read all scheme related documents carefully

NSE Indices Limited Disclaimer: MOFM50 and MOFM100: MOFM50 and MOFM100 offered by Motilal Oswal Asset Management Company Limited (MOAMC) or its affiliates is not sponsored, endorsed, sold or promoted by NSE Indices Limited and its affiliates. NSE Indices Limited and its affiliates do not make any representation or warranty, express or implied (including warranties of merchantability or fitness for particular purpose or use) to the owners of MOFM50 and MOFM100 or any member of the public regarding the advisability of investing in securities generally or in the MOFM50 and (MOFM100) linked to Nifty 50 Index and Nifty Midcap 100 Index respectively or particularly in the ability of Nifty 50 Index and Nifty Midcap 100 Index to track general stock market performance in India. Please read the full Disclaimers in relation to the Nifty 50 Index and Nifty Midcap 100 Index in the Scheme Information Document.

NASDAQ-100 Disclaimer: MOFN100: NASDAQ®, OMX®, NASDAQ OMX®, NASDAQ-100®, and NASDAQ-100 Index®, are registered trademarks of The NASDAQ OMX Group, Inc. (which with its affiliates is referred to as the "Corporations") and are licensed for use by MOAMC. MOFN100 (the Product) has not been passed on by the Corporations as to their legality or suitability. The Product are not issued, endorsed, sold, or promoted by the Corporations. THE CORPORATIONS MAKE NOWARRANTIES AND BEAR NO LIABILITY WITH RESPECT TO THE PRODUCT. NSE Disclaimer: It is to be distinctly understood that the permission given by NSE should not in any way be deemed or construed that the Scheme Information Document has been cleared or approved by NSE nor does it certify the correctness or completeness of any of the contents of the Scheme Information Document.

BSE Disclaimer: It is to be distinctly understood that the permission given by BSE Ltd. should not in any way be deemed or construed that the SID has been cleared or approved by BSE Ltd. nor does it certify the correctness or completeness of any of the contents of the SID. The investors are advised to refer to the SID for the full text of the Disclaimer Clause of the BSE Ltd.